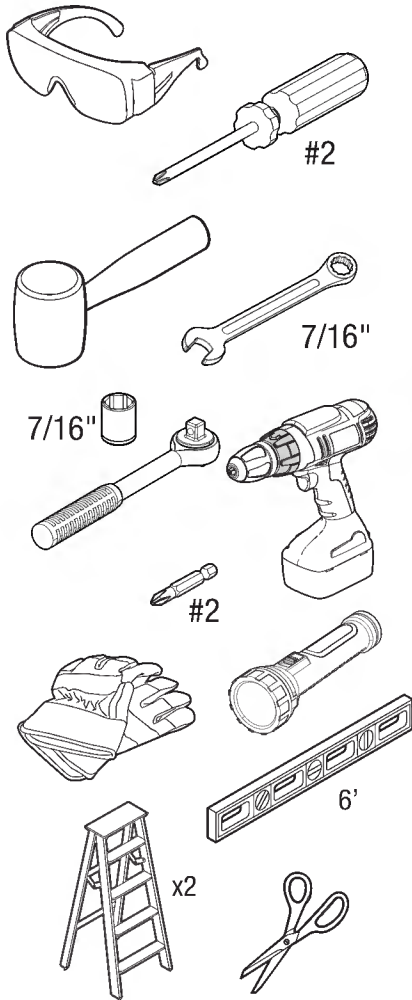


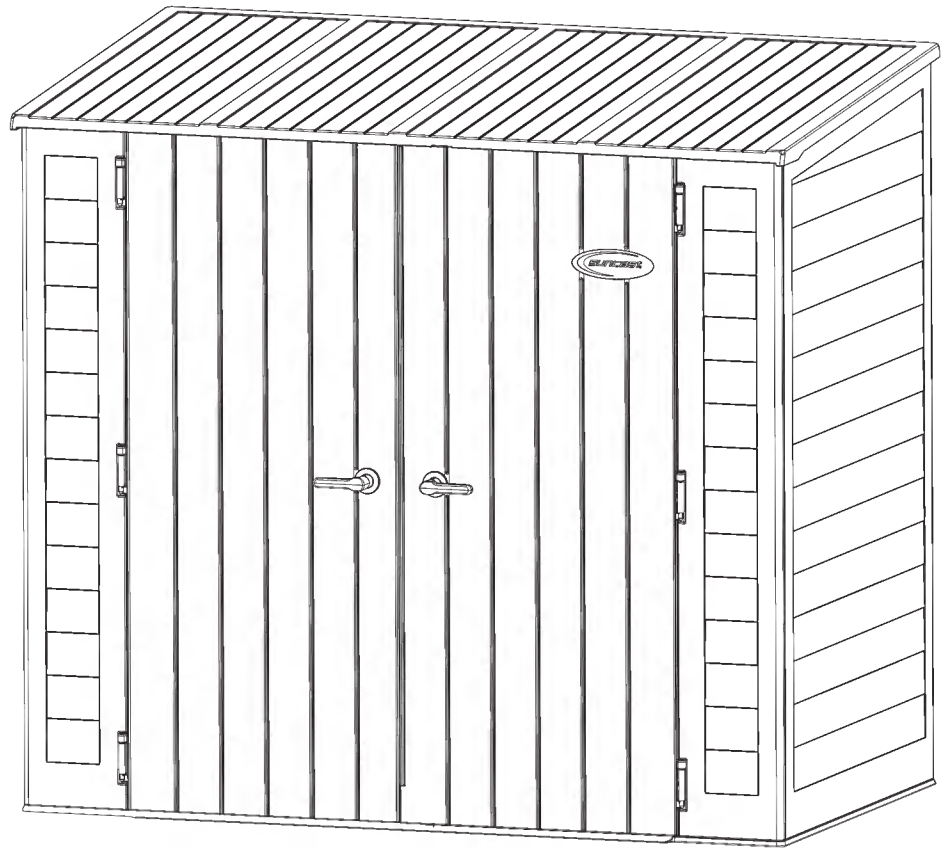
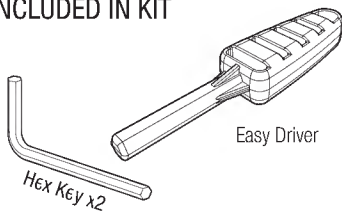
BMS7480 Series 7x4 Modern Shed

ASSEMBLY INSTRUCTIONS

Tools Required



INCLUDED IN KIT



MADE IN THE
USA



Scan QR code for product assembly video

SUNCAST®

Built for Everyday Life™

Register within 90 days of purchase to activate Warranty!

Registration is not required for products with a warranty term of 90 days or less.



1. Verify warranty term of your product by visiting **[www/suncast.com/warranty](http://www.suncast.com/warranty)** (products with a warranty term of 90 days or less do not require registration)
2. Complete registration: fill out the form and upload a copy of your receipt by visiting **<https://support.suncast.com>** or scanning the QR code

Have Questions?

For product questions, assembly assistance, replacement parts and more:



<https://support.suncast.com>



Suncast Corporation Customer Care
701 N. Kirk Road, Batavia, IL 60510



1-800-846-2345

1-630-381-6309



Before you Begin...

- **Consult your local authorities for any permits required to construct shed.** Prior to the construction of your shed, check with the local building code official to review any required permits or building limitations.
- **A level and sturdy foundation is required before shed construction can begin.** Site preparation information is available later in this manual. A foundation that differs from the specifications within this manual could prevent proper assembly and may damage parts.
- **Read instructions thoroughly prior to assembly.** This kit contains parts that can be damaged if assembled incorrectly or in the wrong sequence.
- **Please follow instructions.** Suncoast is not responsible for replacing parts lost or damaged due to incorrect assembly.



Indicates at least 1 additional adult is needed to complete this section.



Indicates caution is recommended when using a power drill.



Indicates orientation is critical, refer to illustrations to ensure parts are orientated correctly before assembling.



Care & Maintenance

- At regular intervals, inspect your shed to make sure that assembly integrity has been maintained. **Repair or replace broken parts immediately.**
- Periodically check that the location you have chosen to set your shed is still level.
- Keep roof clean of snow and leaves.
- To maintain the look of your product, we recommend cleaning it at regular intervals with mild soap and water. **DO NOT** use bleach, ammonia, or other caustic cleaners, and **DO NOT** use stiff bristle brushes. Failure to perform cleaning at regular intervals could result in permanent staining of the plastic. This type of damage is not covered under warranty.



Assembly Day Tips

- **DO NOT** attempt to assemble on a day with strong winds.
- Set aside appropriate amount of time to completely assemble shed. An incomplete shed assembly may pose a safety hazard.
- Make sure you have assistance nearby to lift and secure parts in place.
- **DO NOT** use a torque wrench or hand drill to tighten easy bolts. Use provided easy bolt driver ONLY.
- Suncoast provides extra hardware for small fasteners for customer convenience. In some cases, there will be extra small fasteners once the assembly is complete.

Note: This product contains parts that are used in different orientations to construct the shed. Please take note of the orientation of the parts shown throughout this instruction manual. Failure to follow instructions could result in damage to parts. Suncoast is not responsible for replacing parts lost or damaged due to incorrect assembly.



Caution

- Power tools can apply excessive torque resulting in damage to the product. If you choose to use a power drill to assemble the product, Suncoast recommends using a variable speed, cordless drill with a variable clutch set at the lowest setting. A #2 Phillips driver bit is compatible with the hardware provided. Suncoast makes no guarantee that following this recommendation will prevent damage to the product. Damage to parts due to over-torque are not covered under Suncoast's limited warranty.
- Proper site preparation is required.
- Shed not intended for storage of flammable, caustic or corrosive materials.
- Shed not intended for habitation or for use by children.
- **DO NOT** stand, sit, or store items on the storage shed roof.
- **DO NOT** place near objects that are hot or can become hot.
- Heavy articles should not be leaned against the walls, as this may cause panel distortion and permanent damage.
- Suncoast is not responsible for damage caused by weather or misuse.
- This kit contains parts with sharp edges. Please be careful when handling, use of work gloves is recommended.
- **WHEN DRILLING THROUGH METAL**, beware of burrs, shavings and other sharp edges. Safety glasses are strongly recommended.
- **DO NOT** place in areas near highly reflective surfaces (Note: Low-E windows are more reflective than standard windows and may affect the longevity of the product).
- Product is water resistant and not waterproof. Locate unit away from gutter and down spouts for optimal performance.
- Maximum weight limit for shelf = 50 lbs. (evenly distributed).
- To avoid accidental damage to the door latching system, right door handle should remain in the downward position whenever the door is open.
- To maintain warranty coverage, the product should be padlocked at all times when not in use, refer to the end of this manual for padlock specifications.

Site Preparation and Platform Construction

Materials **NOT** supplied with Shed Kit

Important:

- Site preparation is required for this shed. Placing the shed on a properly constructed, square, flat and level foundation, as described below, is required. Without a properly constructed, square, flat and level foundation, settling will eventually occur, causing distortion and damage to the shed. Suncoast is not responsible for replacing parts damaged or property lost due to incorrect foundation construction. Warranty requires a properly constructed foundation as described below.
- Complete the site preparation and foundation construction before unpacking parts and beginning assembly. For tips on site preparation, go to www.suncoast.com, consult retailer, or local codes.

Site Preparation

1. Consult your local authorities for building codes and covenants before beginning foundation or erecting shed.
2. Before any digging, check with local utilities to determine location of buried cables, pipes, etc.
3. Decide which type of foundation is most suitable for your installation. **The foundation surface must be square, flat and level.** Follow the below guidelines for foundation options:

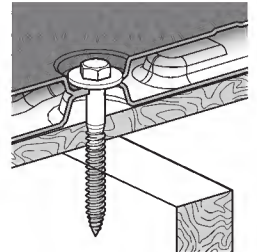
Concrete Slab

- Construct a slab of at least 4" thickness.
- The use of reinforcement bar is recommended.

Wood Platform

- Use exterior grade wood.
- Set the platform on pier blocks or footing.

4. Complete the foundation preparations as follows:
 - A vapor barrier may be applied over the foundation to prevent excessive condensation in the shed. Follow local building codes for a proper vapor barrier.
 - The ground should slope away from the foundation area to provide drainage.



Anchor section example

Anchoring the floor panels to foundation is required after assembly is complete.

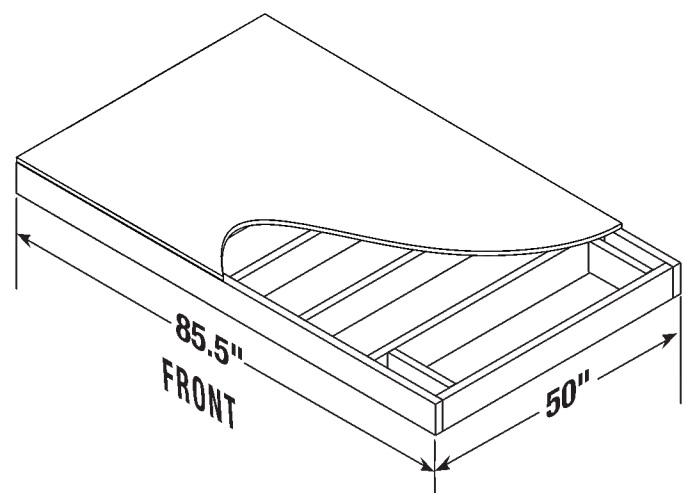
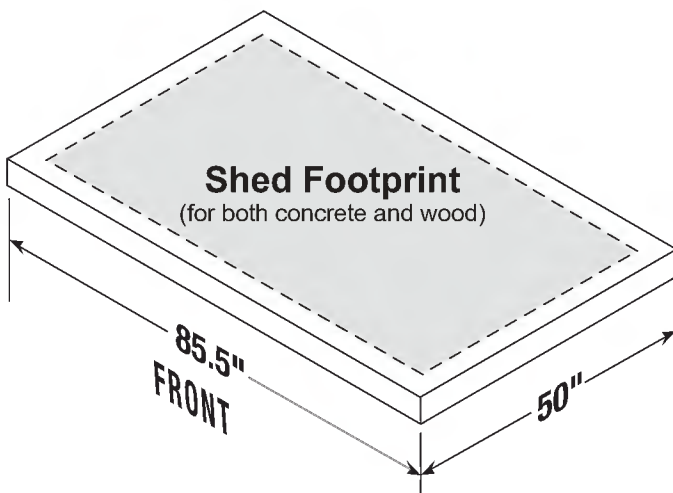
- Shed floor panels include flattened areas where anchors or lag screws are to be secured. These flat areas must be drilled through prior to securing the floor panels to the foundation.

Concrete Slab

- Secure shed to concrete slab using 3/8" masonry anchors with 1" washers. Masonry anchors and 1" washers are available at hardware retailers. **4 anchors are required for this model.**

Wood Platform

- Secure shed to wood platform using 1/4" - 3/8" x 3" lag screws with 1" washers. Lag screws and 1" washers are available at hardware retailers. **4 lag screws are required for this model.**



Note: Shed floor fastening locations are designed to align with the under-structure. Be sure the front of the shed is oriented correctly on the platform to ensure lag bolts engage with the under-structure. Check with local building codes to determine location and quantity of pier blocks needed for your foundation.

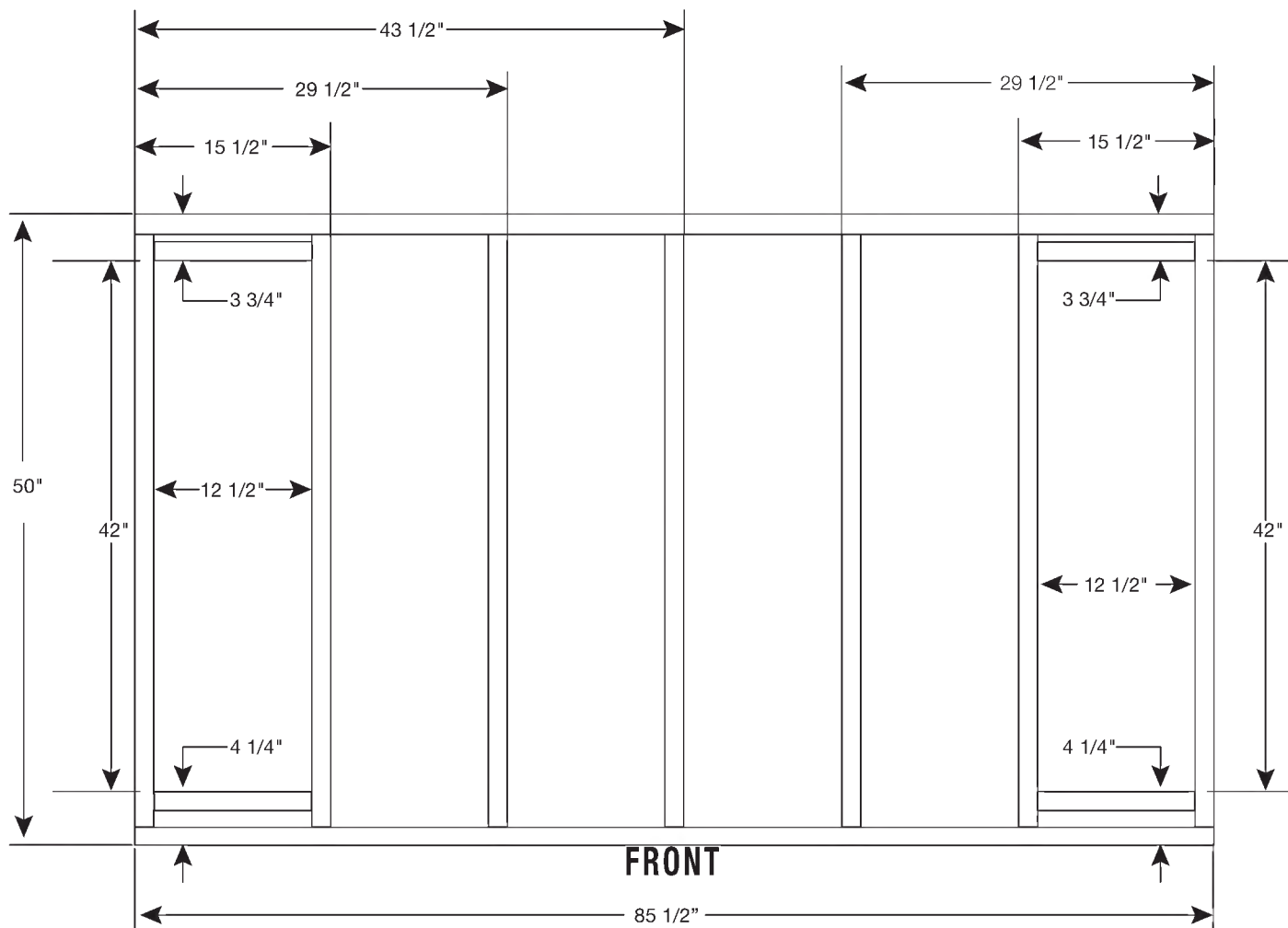
* Dimensions allow for shed to fit within the nearest 1" on each side.

Site Preparation and Platform Construction

Materials **NOT** supplied with Shed Kit

Wood platform critical spacing:

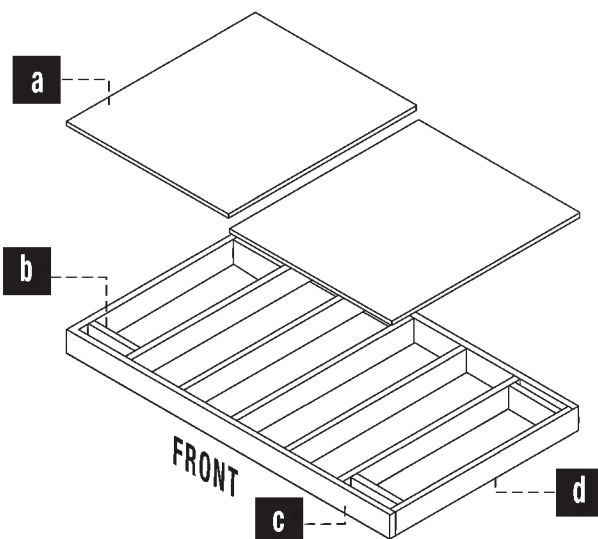
**Check all critical spacing measurements carefully.*



Wood platform materials list

Item	Qty	Size
a	2	50" x 42.75" x .75"
b	4	2" x 6" x 12.5"
c	2	2" x 6" x 85.5"
d	7	2" x 6" x 47"

- 2 x 6 dimensional lumber is actually 1/2" smaller than noted sizes. Dimensions given presume standard 1.5" x 5.5" actual size lumber. Lumber dimensions can vary. Check lumber dimensions before cutting and make appropriate adjustments to achieve given dimensions. Cut sizes are actual size.

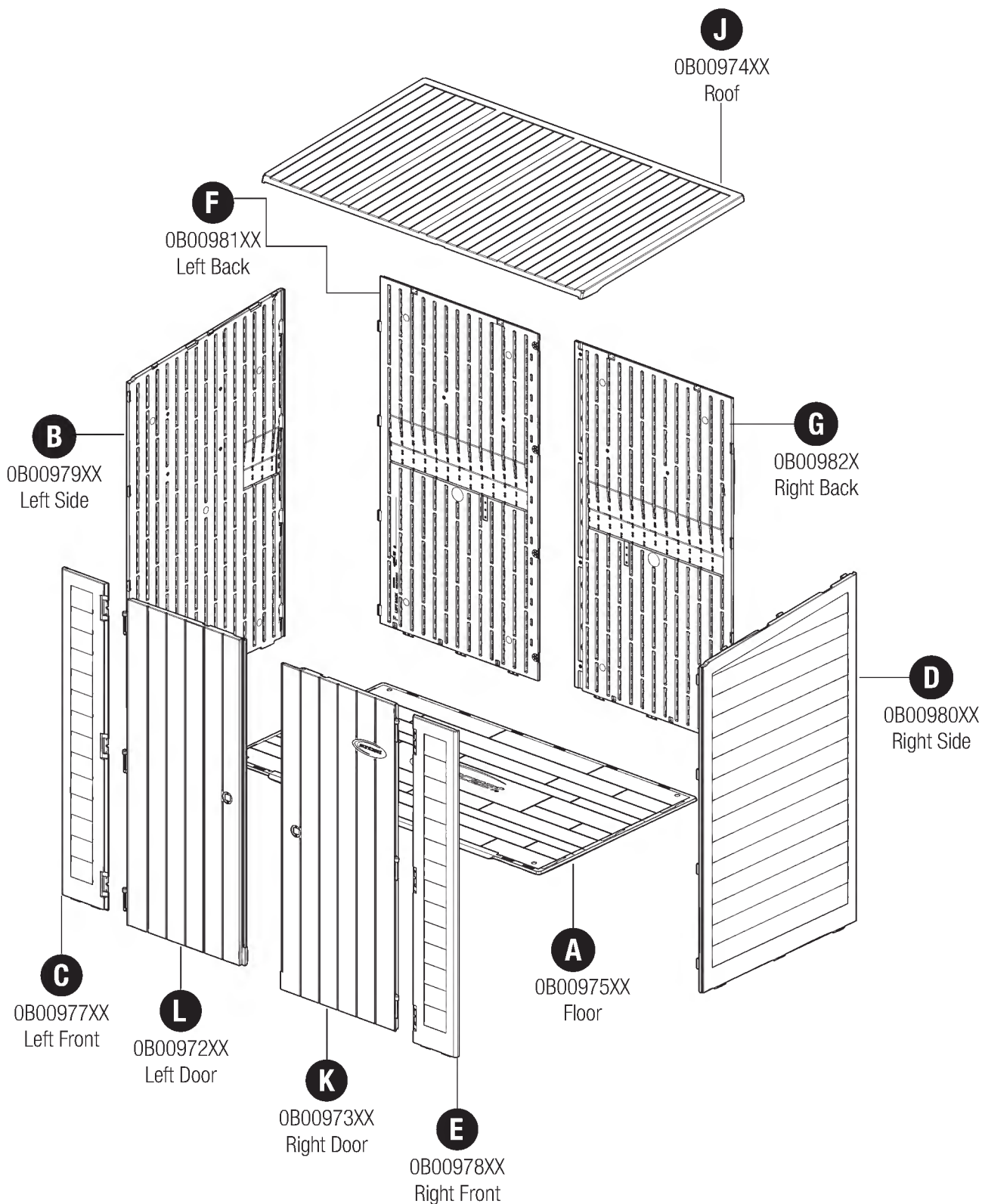


Parts - Panels

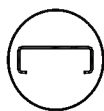
IMPORTANT

COMPLETE SITE PREPARATION AND FOUNDATION CONSTRUCTION BEFORE UNPACKING ALL PARTS.

OPEN ALL BOXES FIRST AND NEATLY LAYOUT PARTS. SMALL PARTS MAY BE CONTAINED IN EACH BOX. PLEASE REFERENCE THE PARTS LIST WITHIN THIS MANUAL TO VERIFY ALL PARTS ARE PRESENT.



Parts - Steel Kits & Shelf



S1

1MRG02031
83" Header Beam



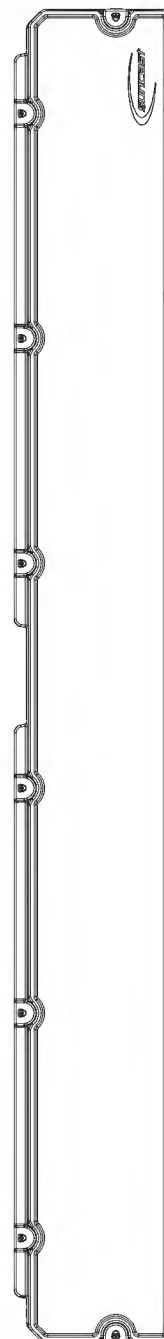
S2

1MRG05031
82.91" Truss Leg
x2



S3

1MRG07029
64.25" S-Rail



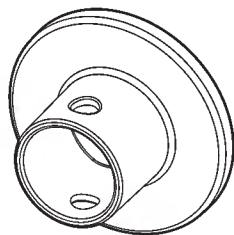
H

0B00976XX
Shelf

Steel Kit #1: 0860143

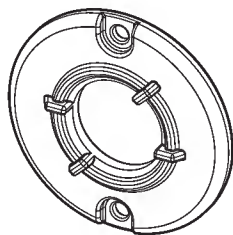
Parts - Components

Parts Bag #1: 0464969



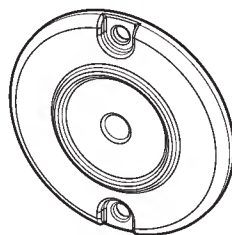
P1

0102828P9
Locking Collar
x2



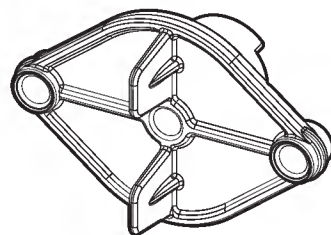
P2

0102831P9
Lock Bushing, Right



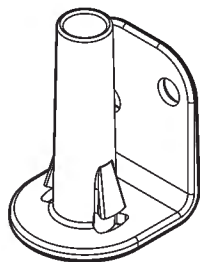
P3

0102830P9
Lock Bushing, Left



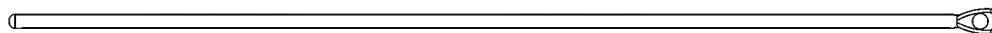
P4

0102832P9
Lock Cam



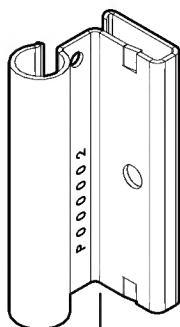
P5

0102829P9
Rod Bushing
x2



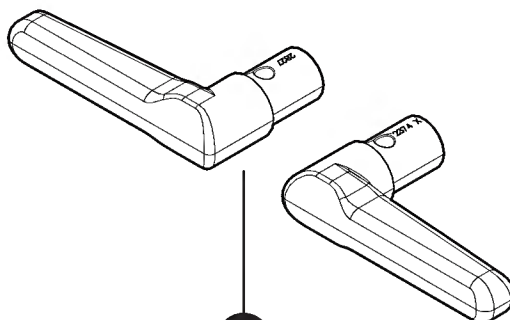
P6

0280687
Locking Rod (36.8")
x2



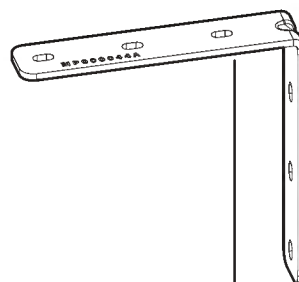
P7

OMP000002
Door Hinge
x6



P8

0102827P9
Door Handle
x2

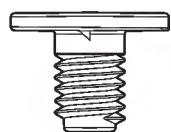


P9

1MPG00044A
Corner Brace
x2

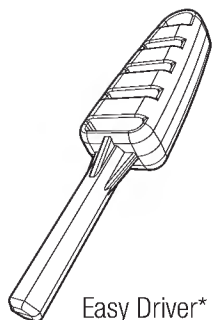
Parts - Hardware

0480595 - Bag EG

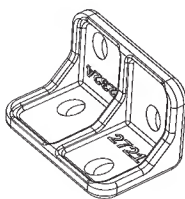


E1

010256307
Easy Bolt
x4



Easy Driver*



G1

010272110
Roof Bracket
x10

Master Hardware Bag - 0470005

0671340 - Bag A



A1

0630821
#10 x .625"
Screw
x100

0671341 - Bag B



4 mm
Hex Key*



B1

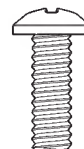
0632448
#8-32
Nut Insert
x18



B2

0632449
#8-32 x .5"
Bolt
x18

0671345 - Bag D



D1

0210171
.25-20 x .75"
Bolt
x6



D2

0632451
.25"-20
Nylon Nut
x6

0671344- Bag C



6 mm
Hex Key*



C1

0632588
Steel Spacer
x4



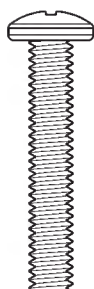
C2

0632515
.25-20
Nut insert
x2



C3

0632587
#8 x .375"
Bolt
x4



C4

0630631
.25-20 x 1.5"
Bolt
x1



C5

0630897
.25-20 x 1"
Bolt
x1

0671347 - Bag F



F1

0630520
#10 x 1"
Screw
x8

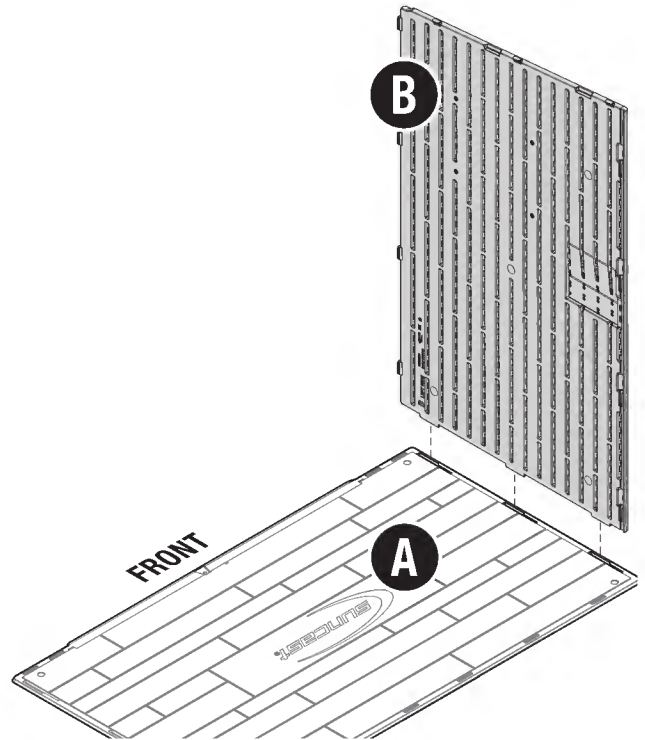
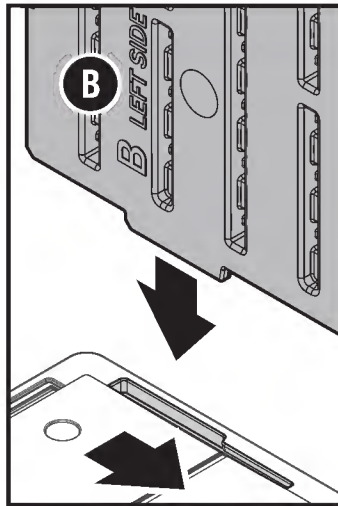
IMPORTANT: If you choose to use a power drill to assemble the product, refer to caution statements for power drill guidelines. Damage to parts due to over-torque are not covered under Suncoast's limited-warranty. If not using a power drill, some additional pressure may be needed to start the screw.

Assembly - Walls

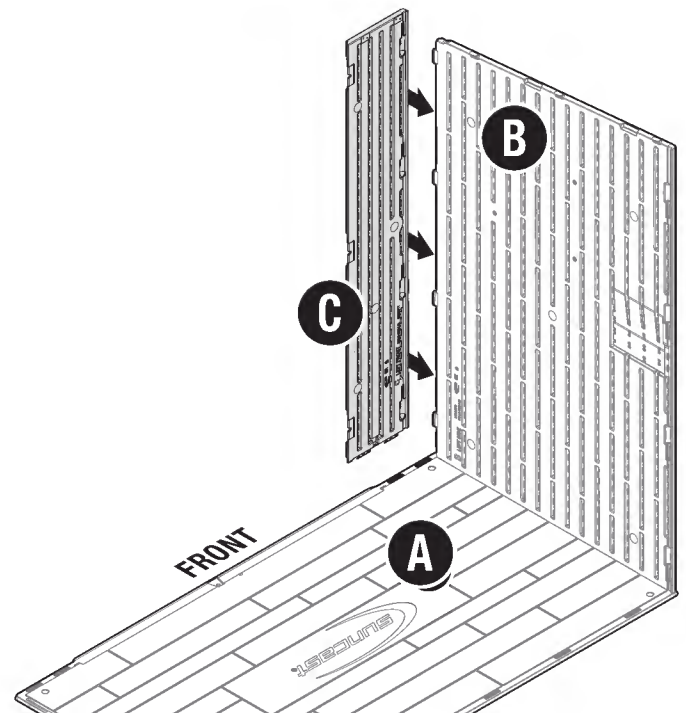
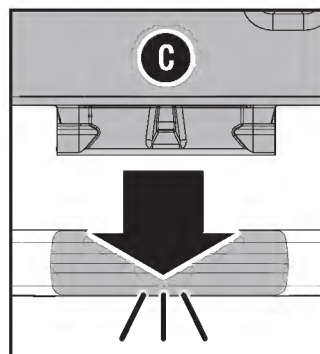
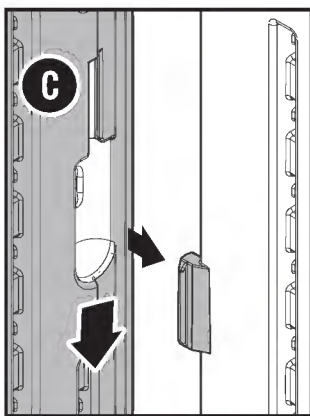
Required Hardware/ Steel Kits



- 1 Place floor (A) on flat surface as shown. Insert bottom tabs of left side (B) into slots on floor (A). Slide (B) back to lock into place.

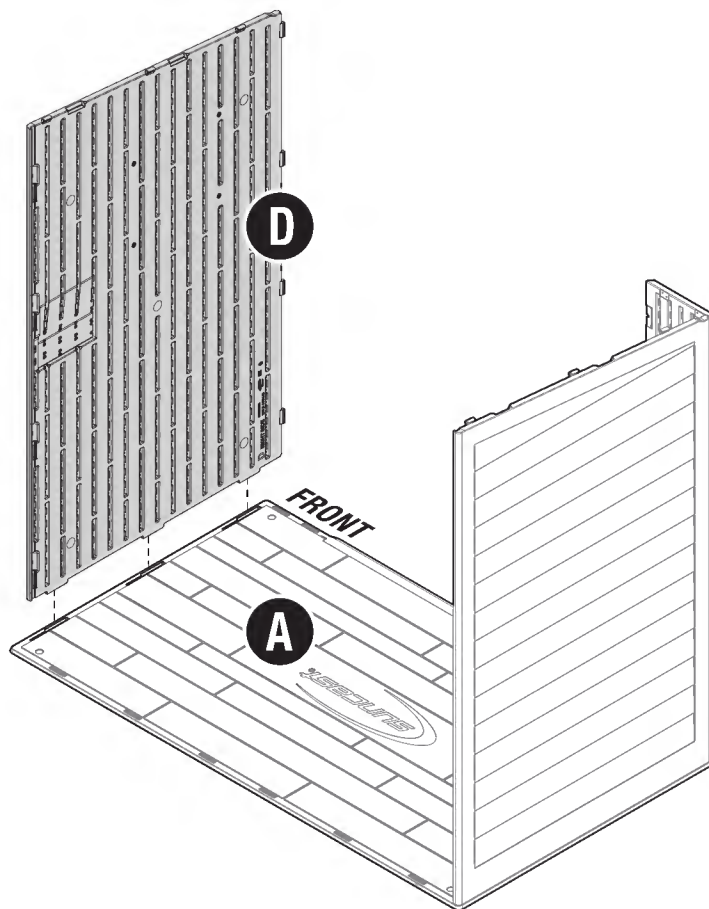
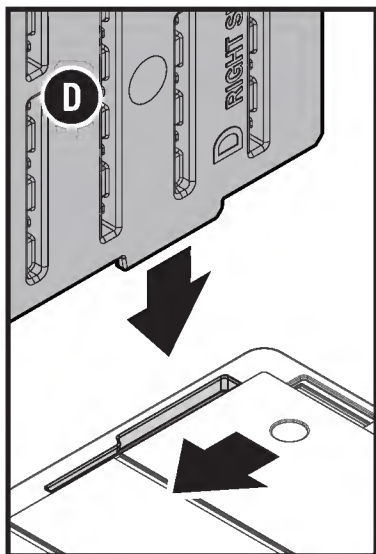


- 2 Align slots of left front (C) with tabs on left side (B). Slide down to engage until bottom tabs snap into floor (A).

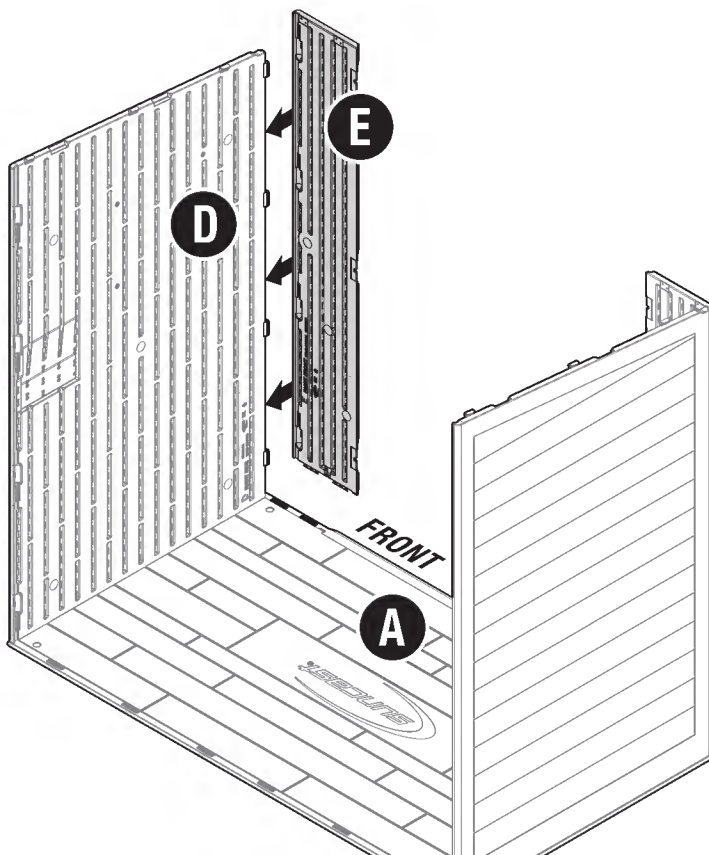
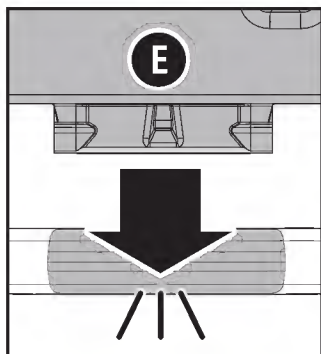
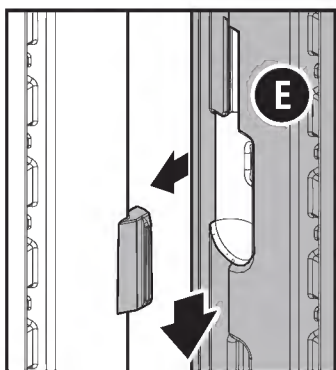


3

Insert bottom tabs of right side (D) into slots on floor (A).
Slide (D) back to lock into place.

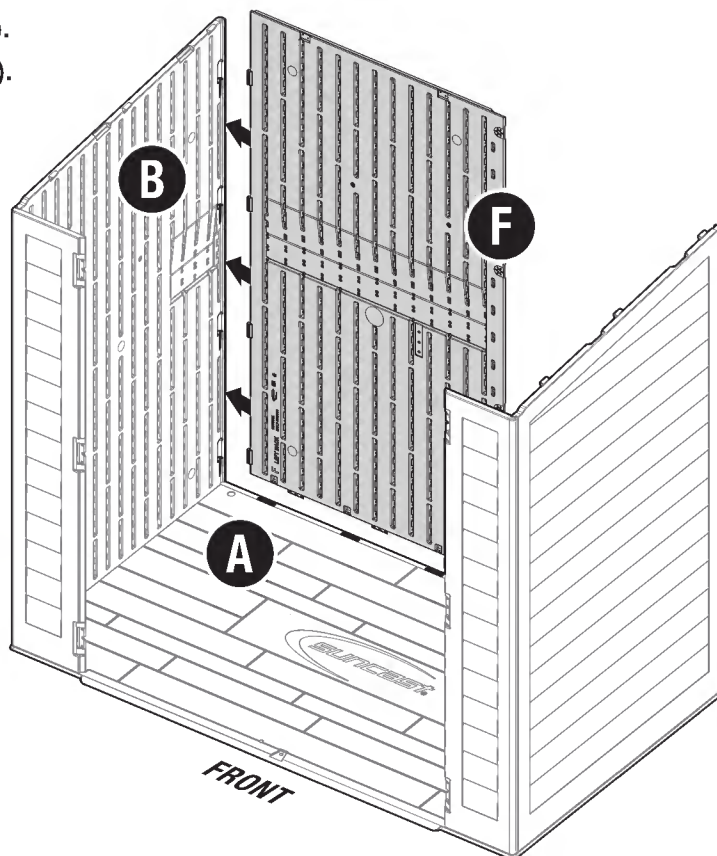
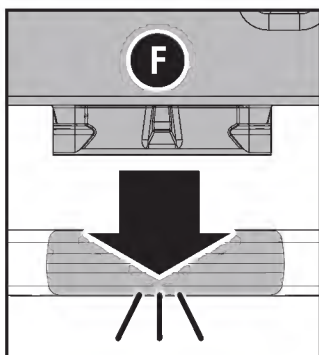
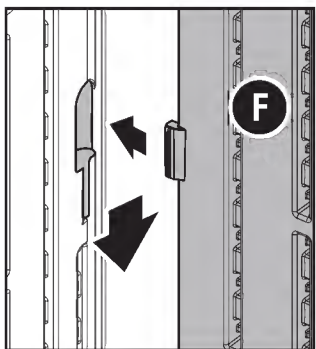
**4**

Align slots of right front (E) with tabs on right side (D).
Slide down to engage until bottom tabs snap into floor (A).

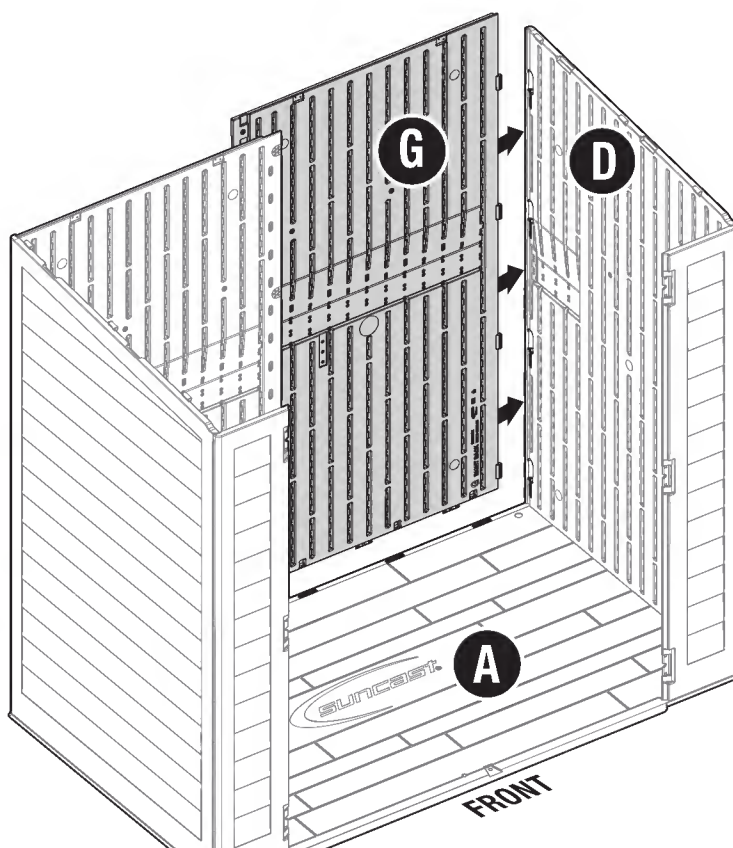
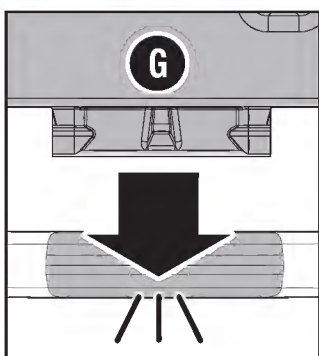
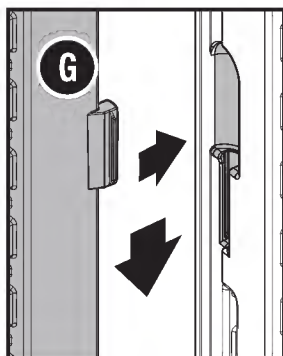


5

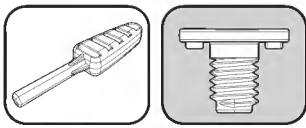
Align tabs of the left back (**F**) with the slots on left side (**B**).
Slide down to engage until bottom tabs snap into floor (**A**).

**6**

Align tabs of the right back (**G**) with the slots on right side (**D**).
Slide down to engage until bottom tabs snap into floor (**A**).

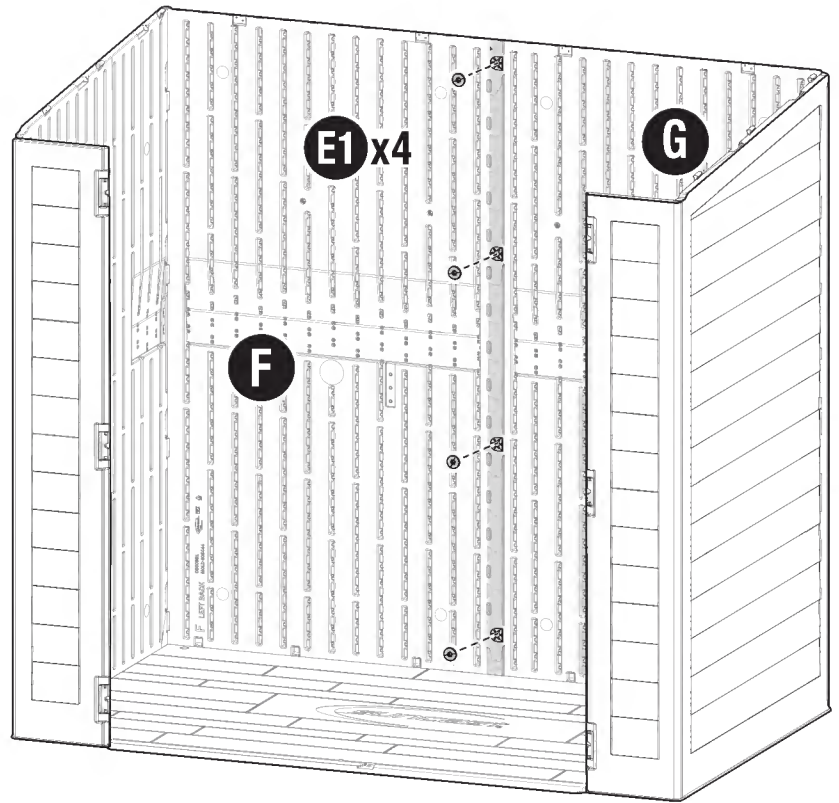
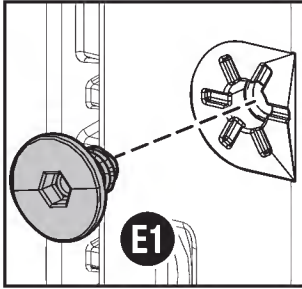


7



(E1) X4

Secure left (F) and right (G) back using 4 easy bolts (E1). Tighten securely (3-4 clicks).

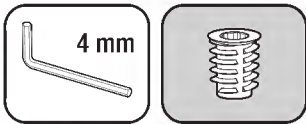


Assembly - Roof

Required Hardware/ Steel Kits

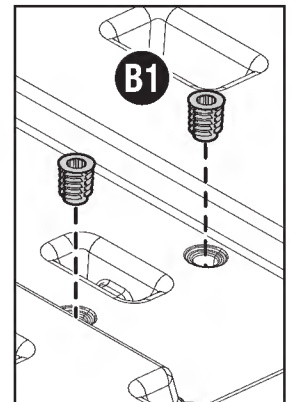
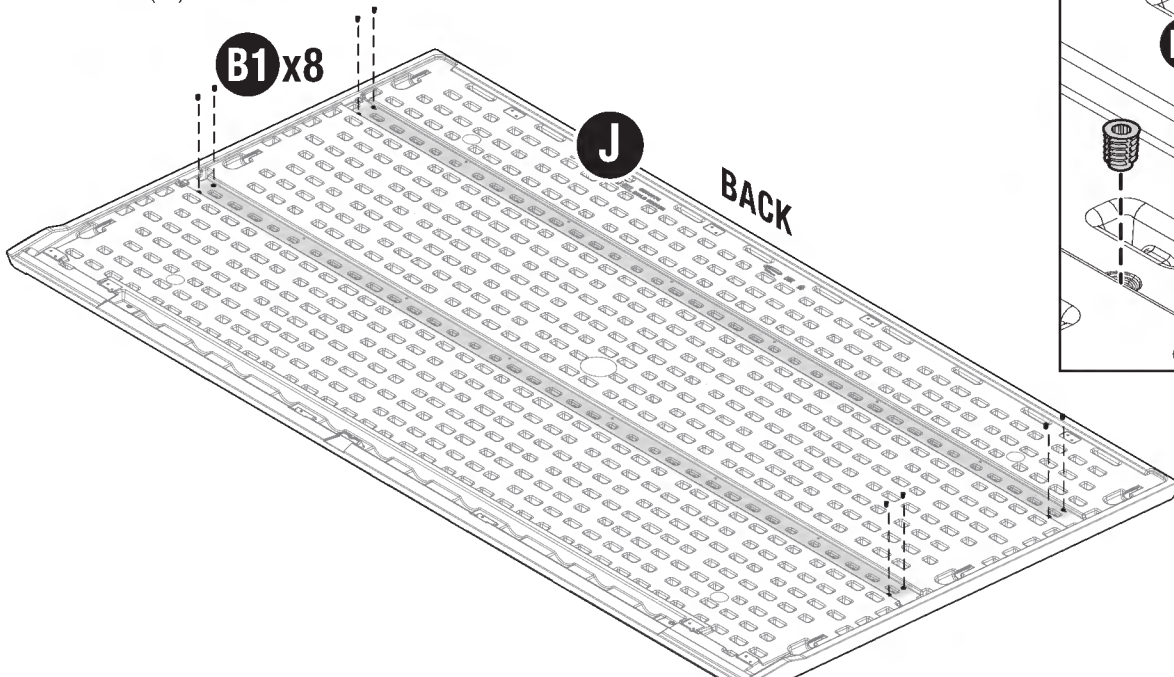


8

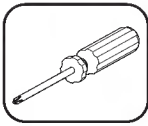
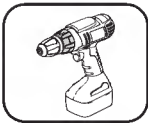


(B1) x8

Position roof (J) on a flat surface as shown. Install 8 nut inserts (B1) into roof at the locations indicated. **Note:** Nut inserts (B1) should sit flush with surface of the panel.



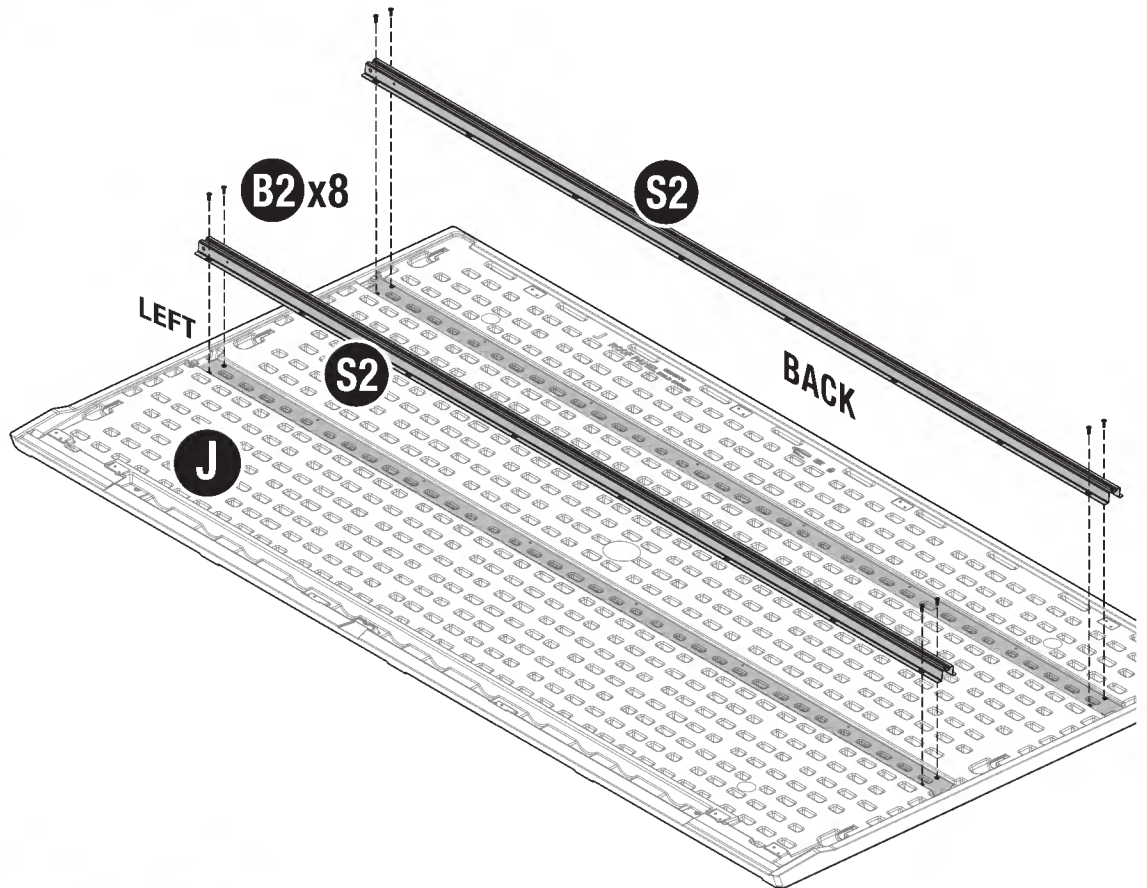
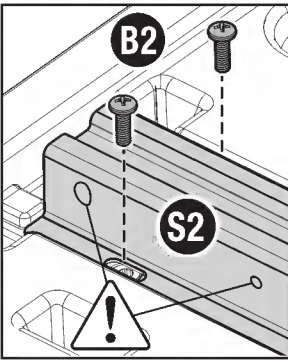
9



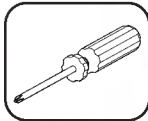
(B2) x8

Align 2 truss legs (82.91", S2) to roof (J) and lower into position. Using 4 bolts each (B2) secure corners of truss legs into the previously installed nut inserts.

IMPORTANT: (S2) should be positioned so that the ends with two holes are on the left side of the roof (J).

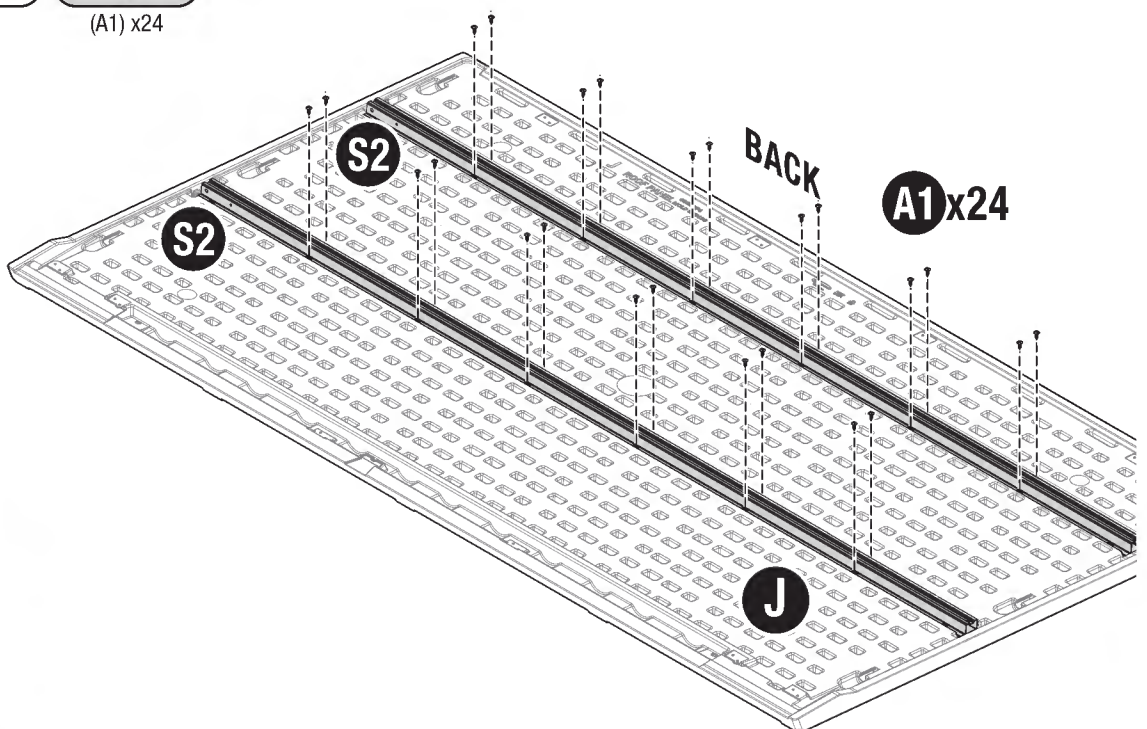
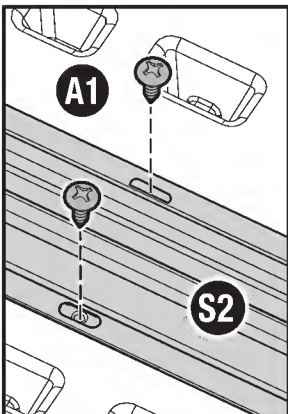


10



(A1) x24

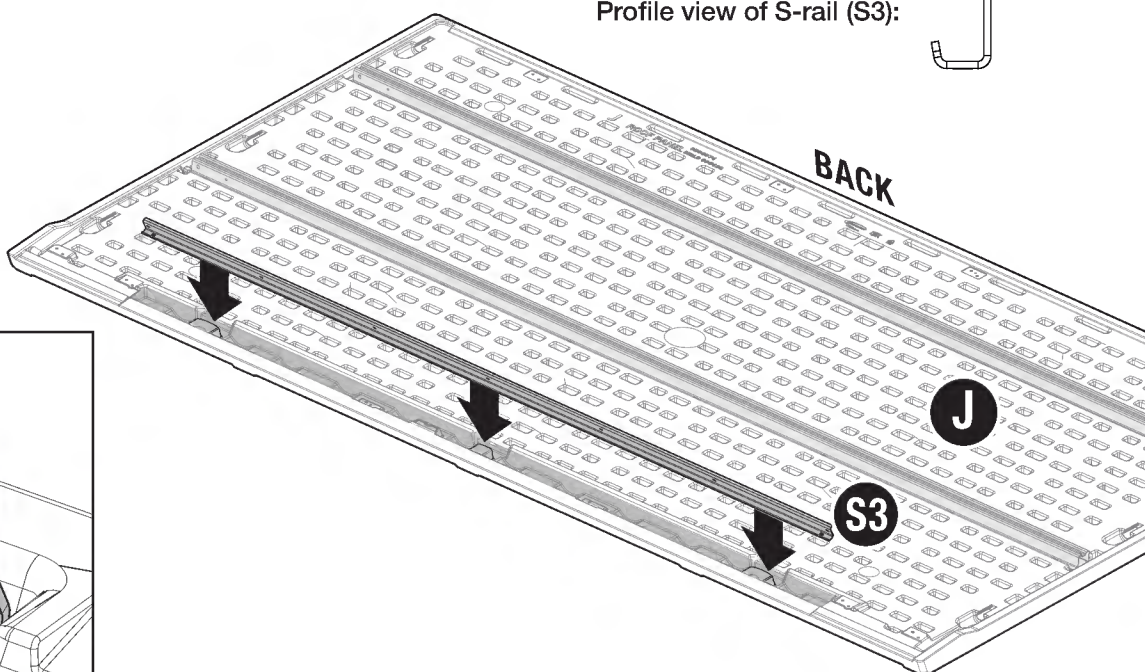
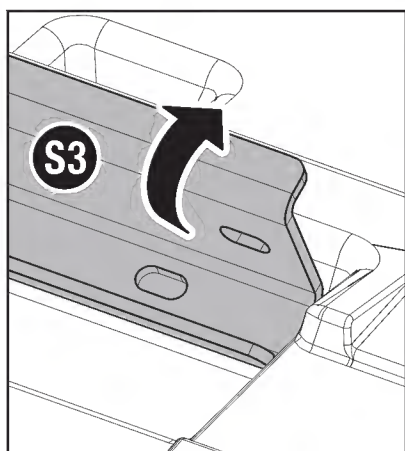
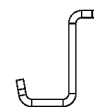
Using 24 screws (A1), continue securing truss legs (S2) to roof (J).



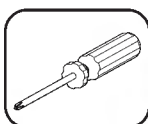
11

With S-rail (64.25",S3) orientated as shown, lower into roof (J) at a slightly forward angle and then rotate the S-rail to an upright position until it snaps into place at the three locations shown.

Profile view of S-rail (S3):

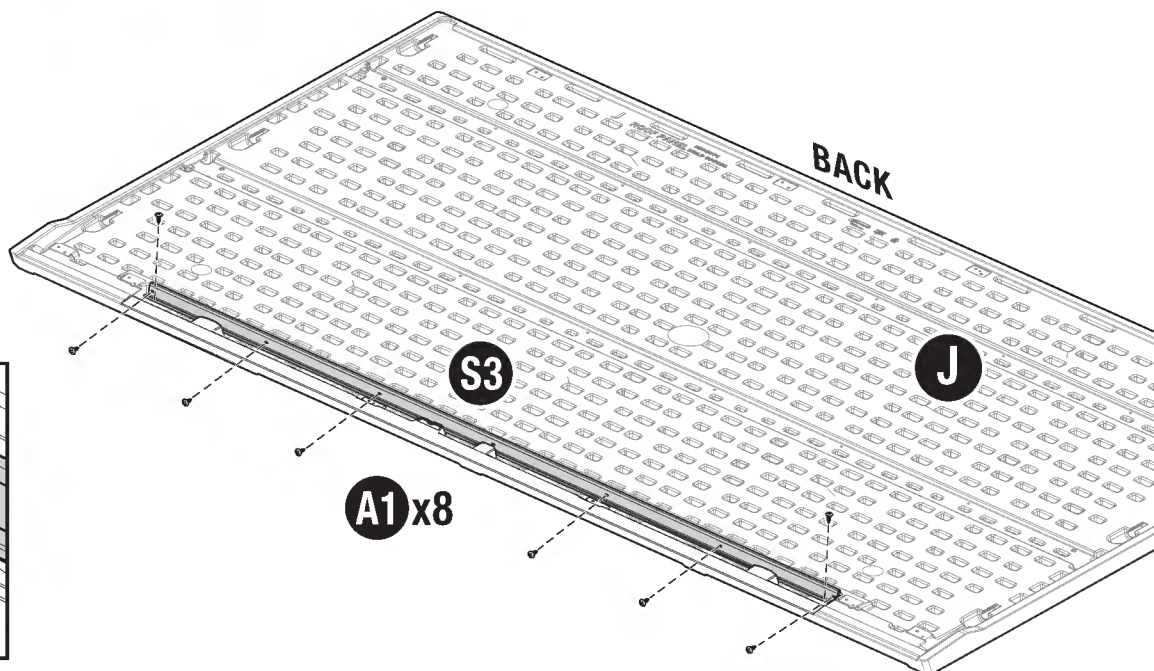
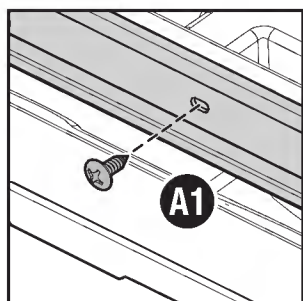


12

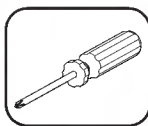


(A1) x8

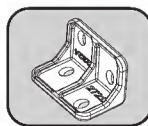
Using 8 screws (A1), secure S-rail (S3) to roof where indicated.



13



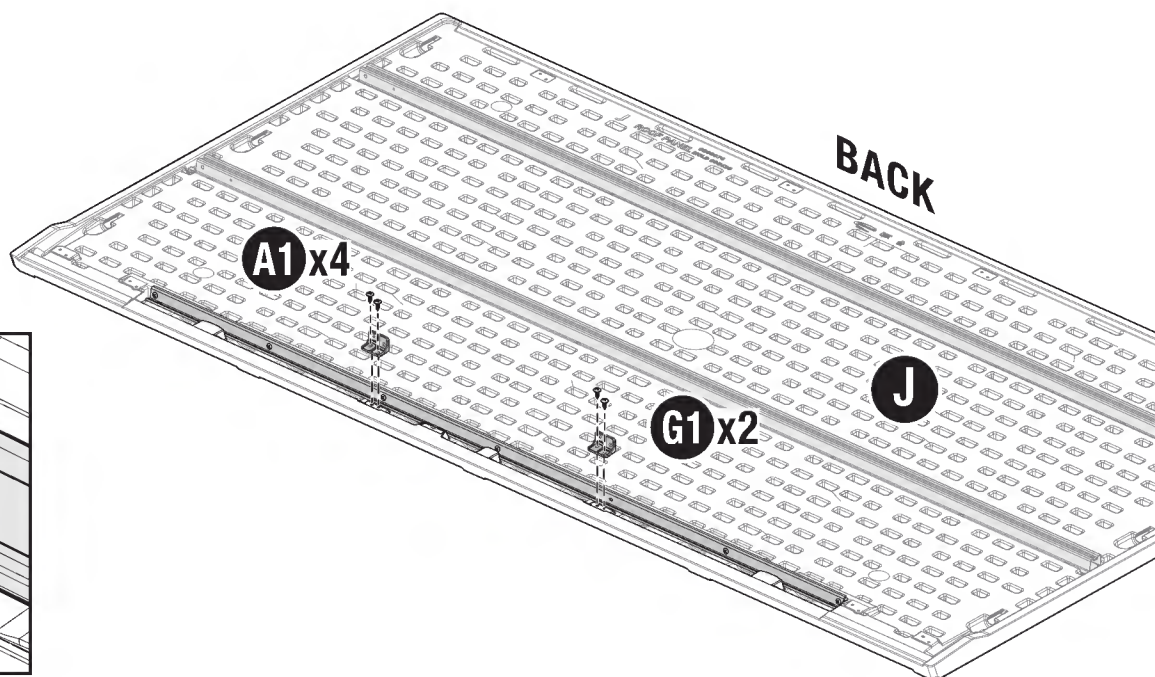
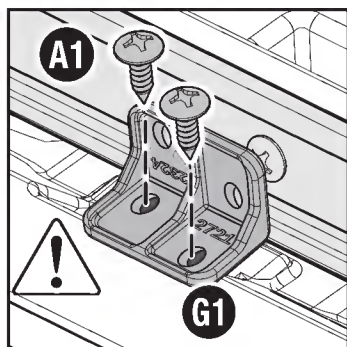
(A1) x4



(G1) x2

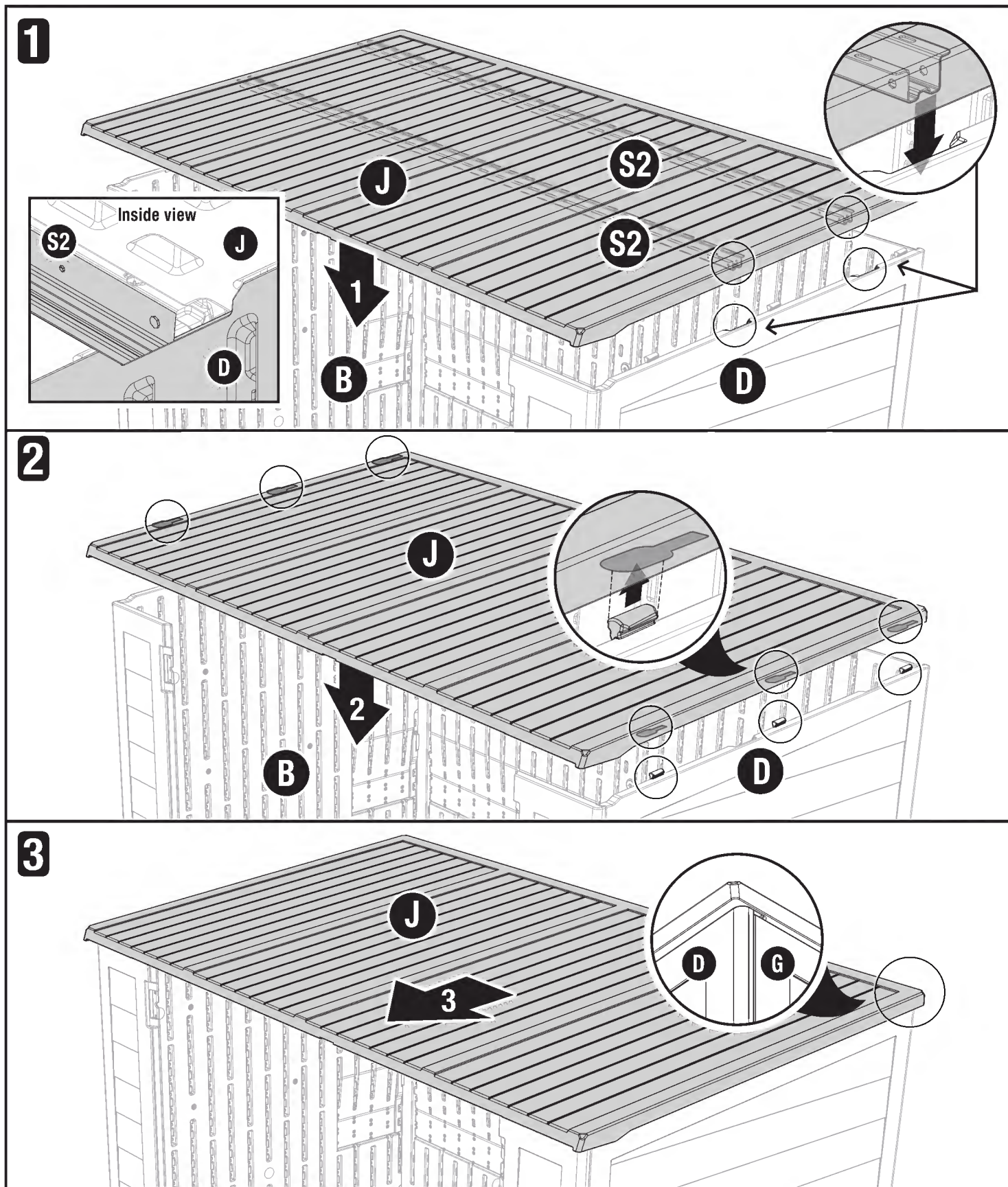
Using 2 screws each (A1), secure 2 roof brackets (G1) to roof (J) where indicated.

IMPORTANT: Only 2 screw holes will be used.

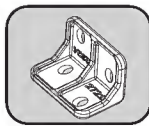
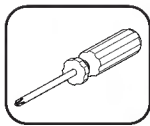
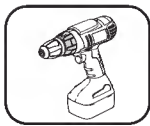


14

- 1) Center roof (J) over the shed with the wide band facing the back of the shed. **IMPORTANT:** Truss legs (S2) should be seated into the back of the truss leg pockets as shown.
- 2) Confirm the six roof slots are positioned just behind the tabs located on the left and right sides (B,D).
- 3) Slide roof (J) forward to engage the roof slots with the tabs. **Note:** A rubber mallet may be helpful.



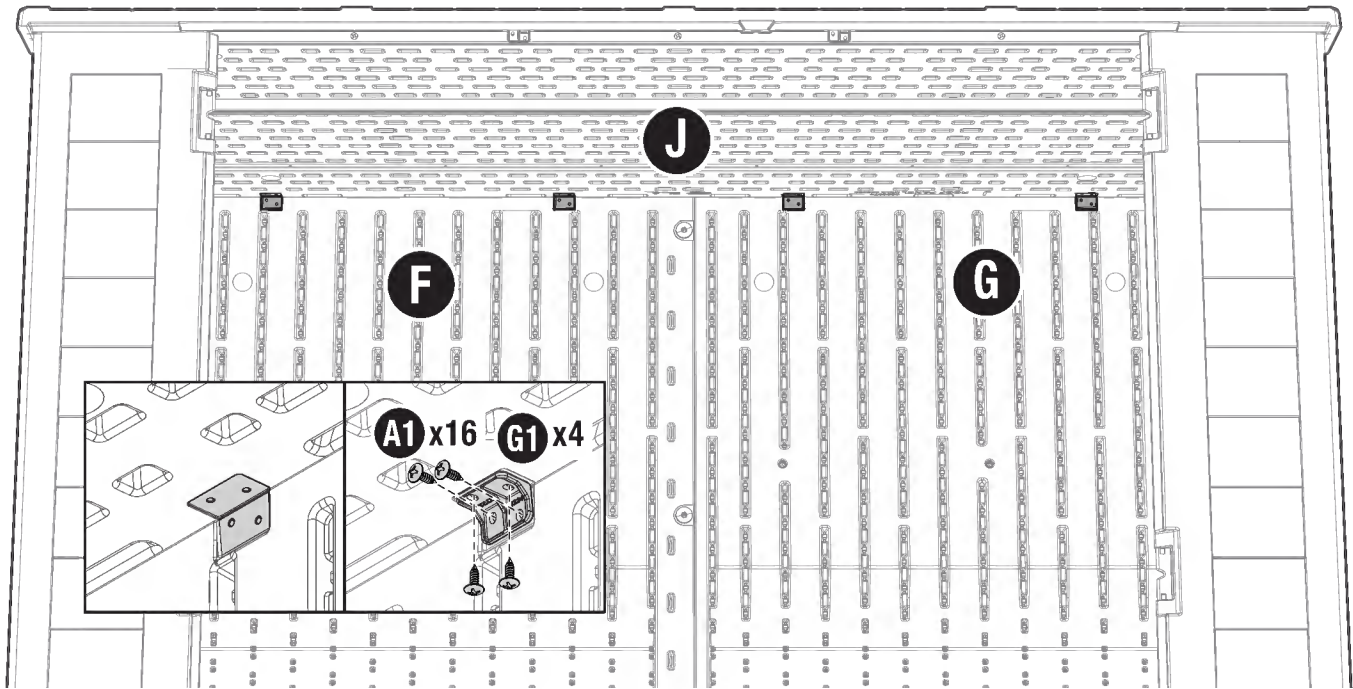
15



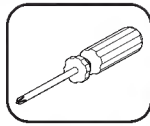
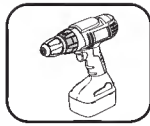
(A1) x16

(G1) x4

Using 16 screws total (A1), secure 4 roof brackets (G1) across the left and right back (F,G) and roof (J) at the locations shown.

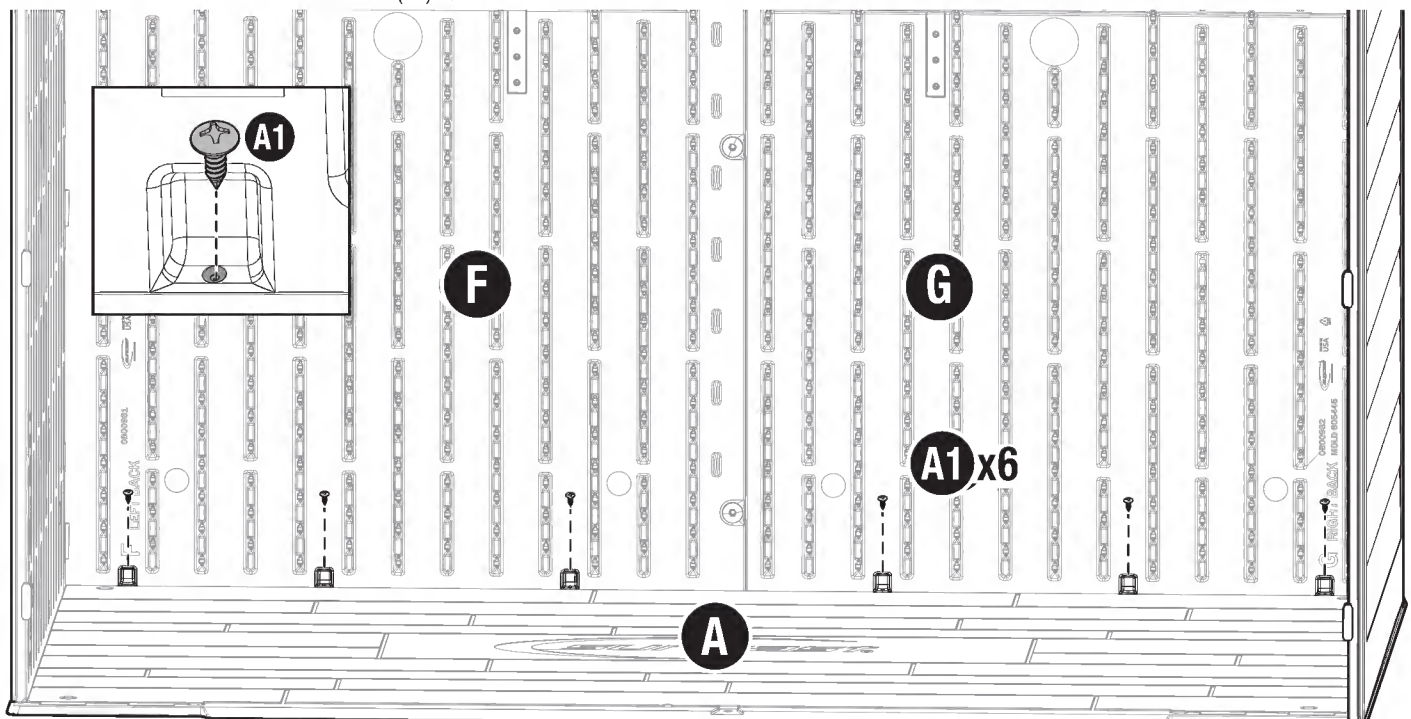


16

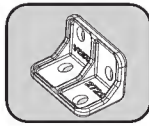
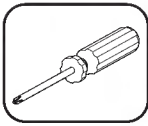
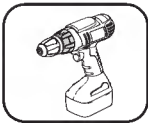


(A1) x6

Using 6 screws total (A1), secure left and right back (F,G) to floor (A) at the locations shown.



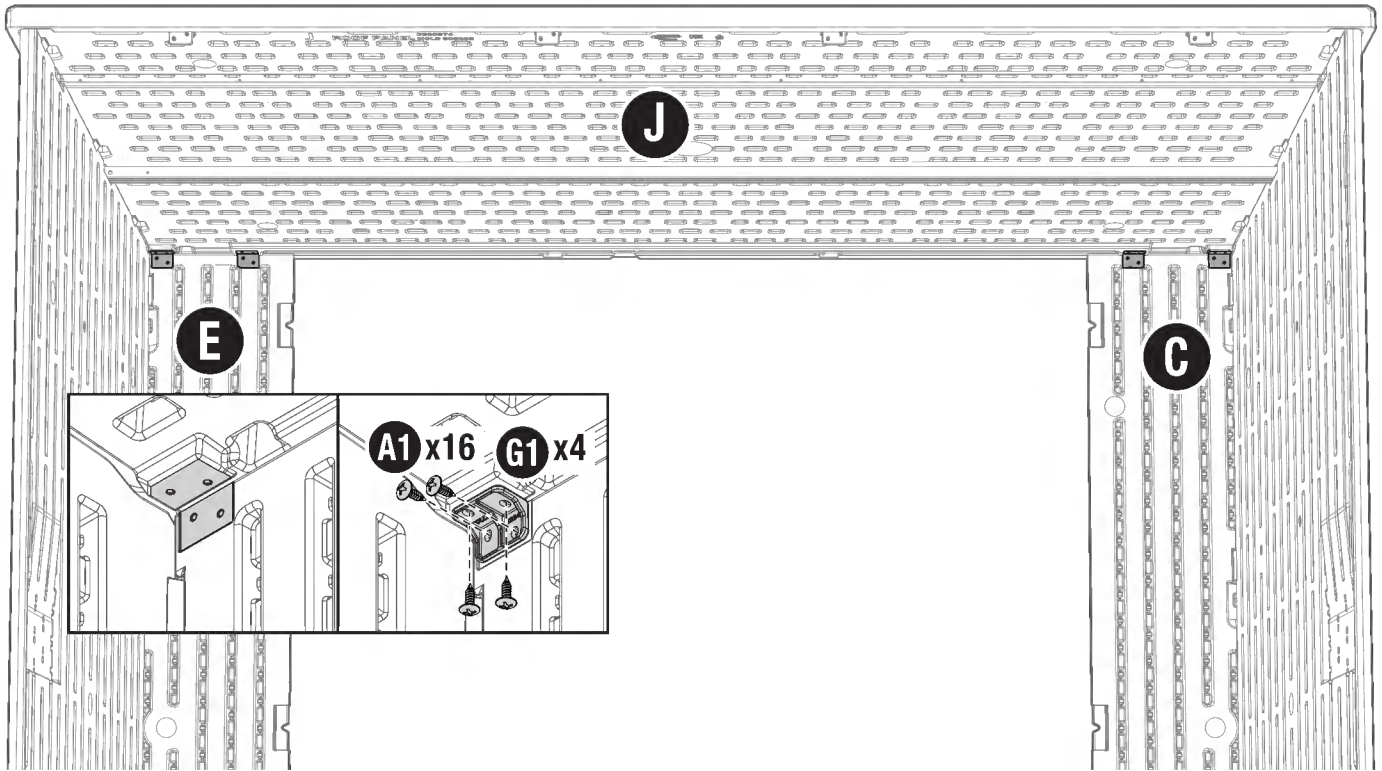
17



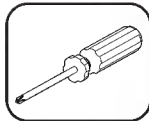
(A1) x16

(G1) x4

Using 16 screws total (A1), secure 4 roof brackets (G1) across the left and right front (C,E) and roof (J).

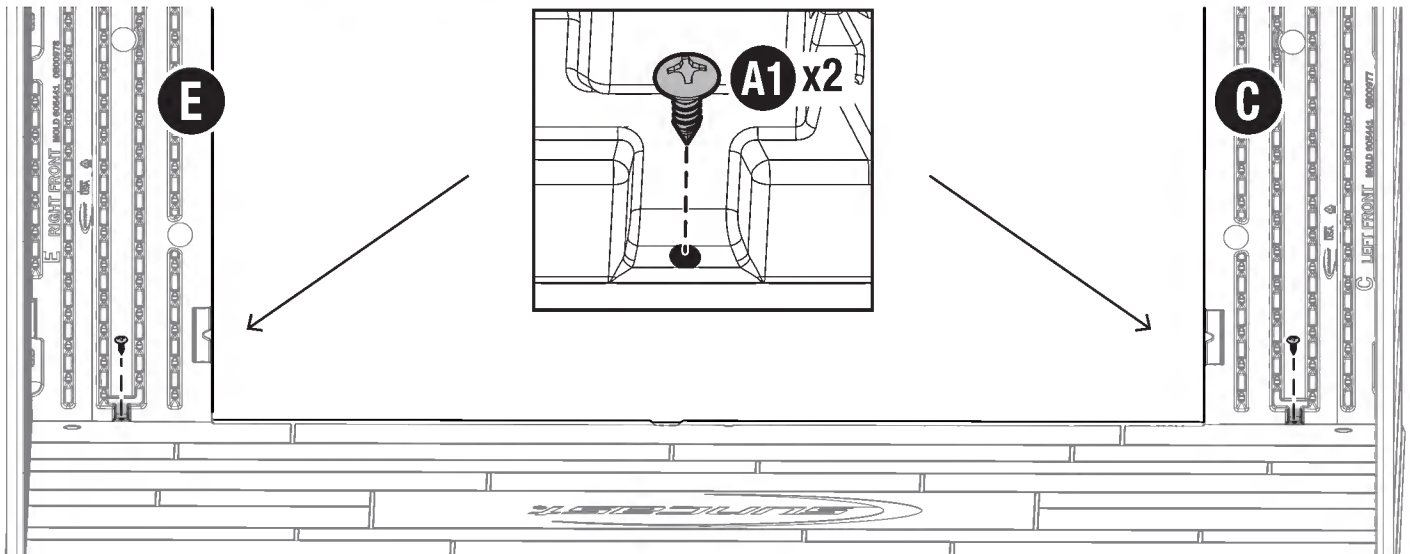


18



(A1) x2

Using 2 screws (A1), secure left and right front (C,E) to floor (A) at the locations indicated.

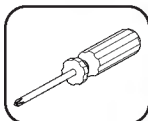
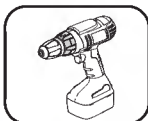


Assembly - Shelf

Required Hardware/ Steel Kits

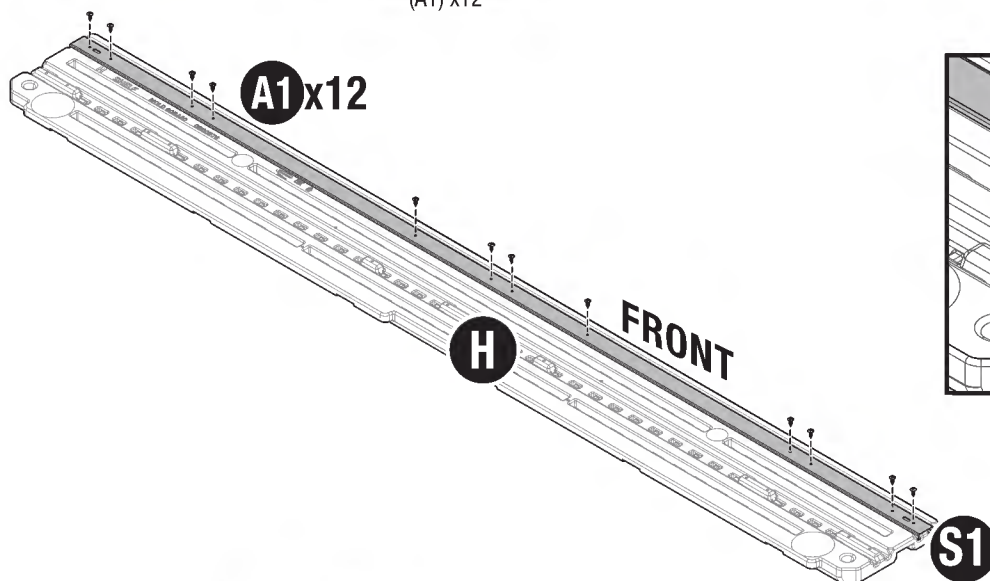


19

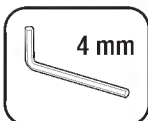


(A1) x12

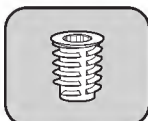
Place shelf (**H**) on a flat surface as shown. Position header beam (**83"**, **S1**) into channel, secure with 12 screws (**A1**). **Note: Slotted holes are not used.**



20



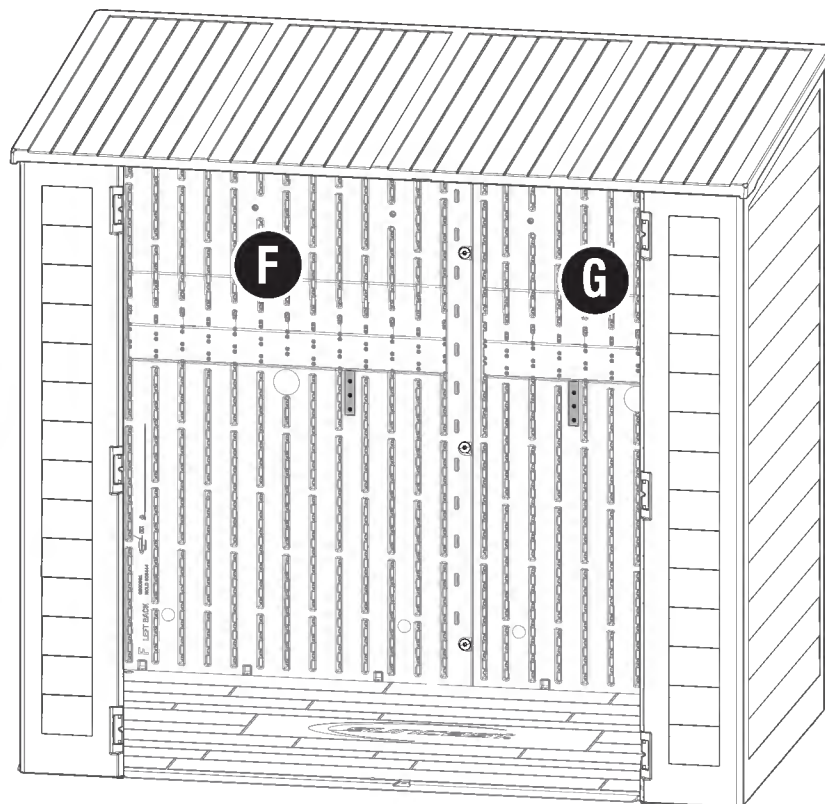
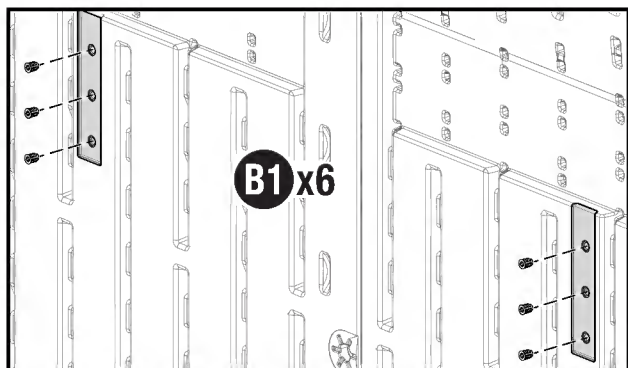
4 mm



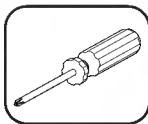
(B1) x6

Install 6 threaded nut inserts (**B1**) into back panels (**F,G**) where indicated.

Note: Nut inserts (B1) should sit flush with surface of panel.



21

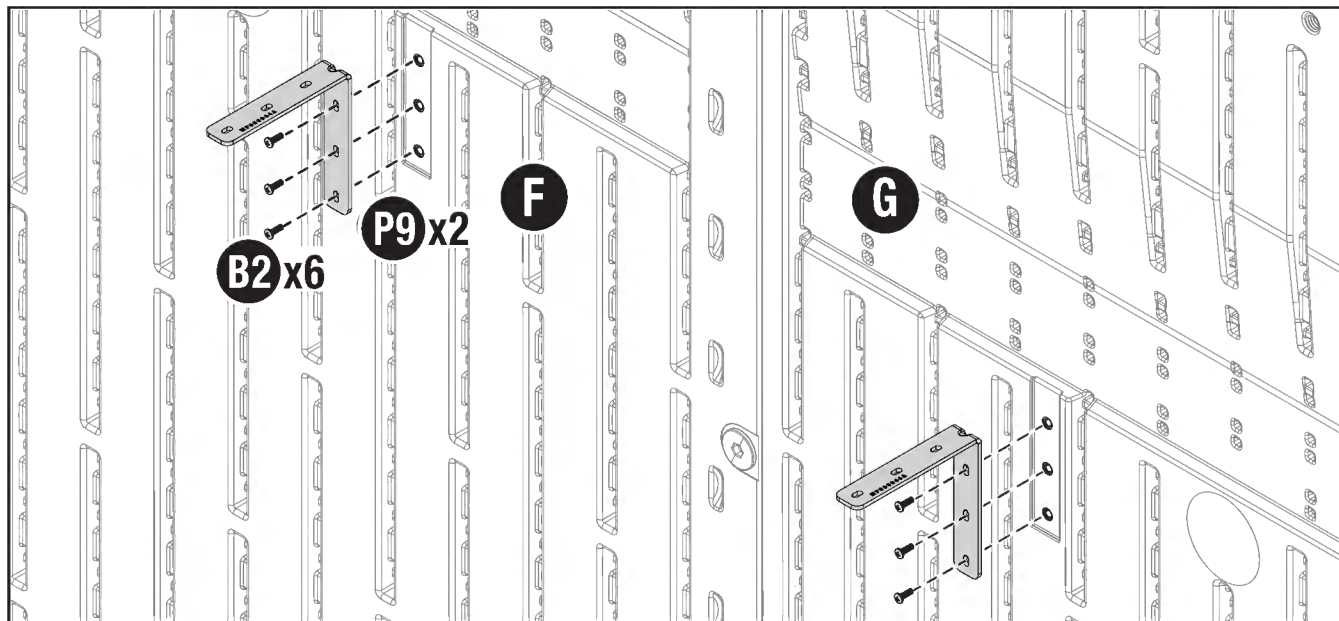


(B2) x6

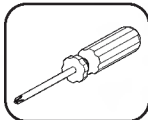


(P9) x2

Using 3 bolts each (B2), secure 2 corner braces (P9) across back panels (F,G) at the locations indicated.

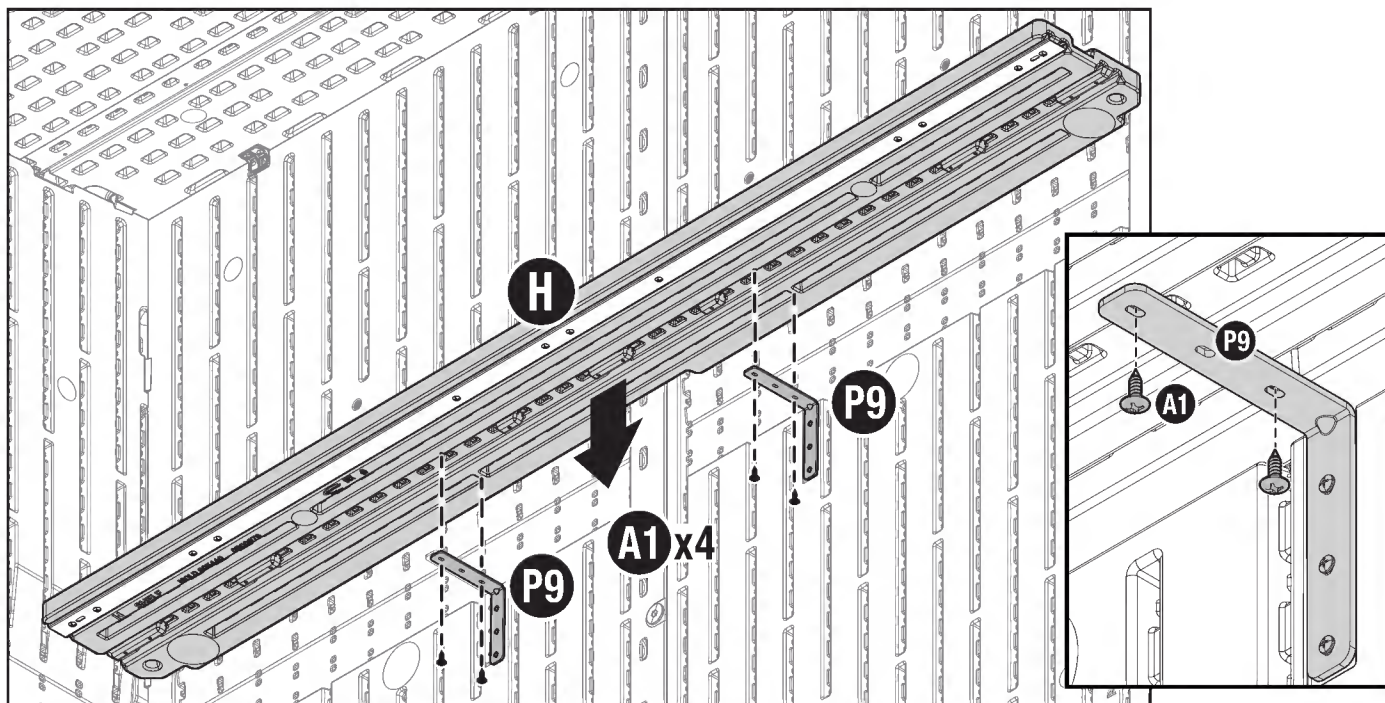


22

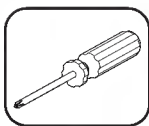


(A1) x4

Align shelf (H) over corner braces (P9) as shown. Using 2 screws each (A1) secure shelf (H) to each corner brace (P9) where indicated.

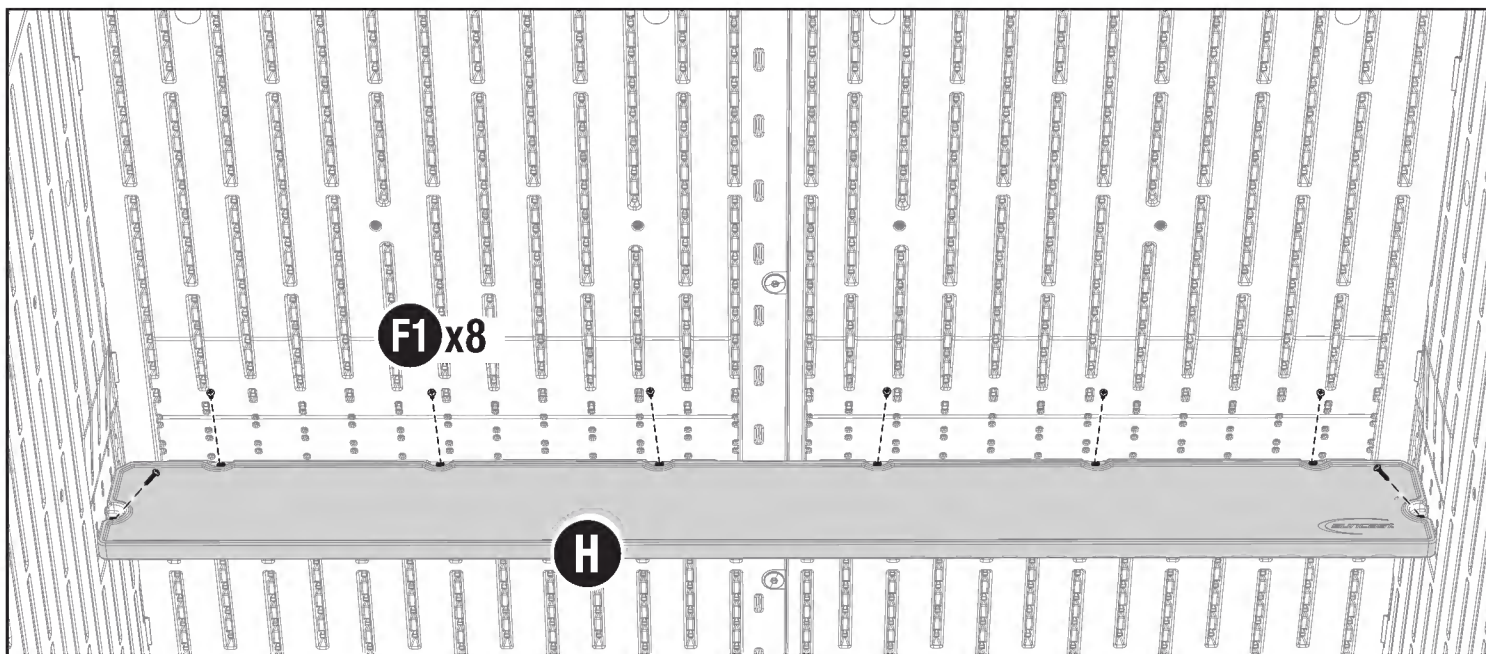


23

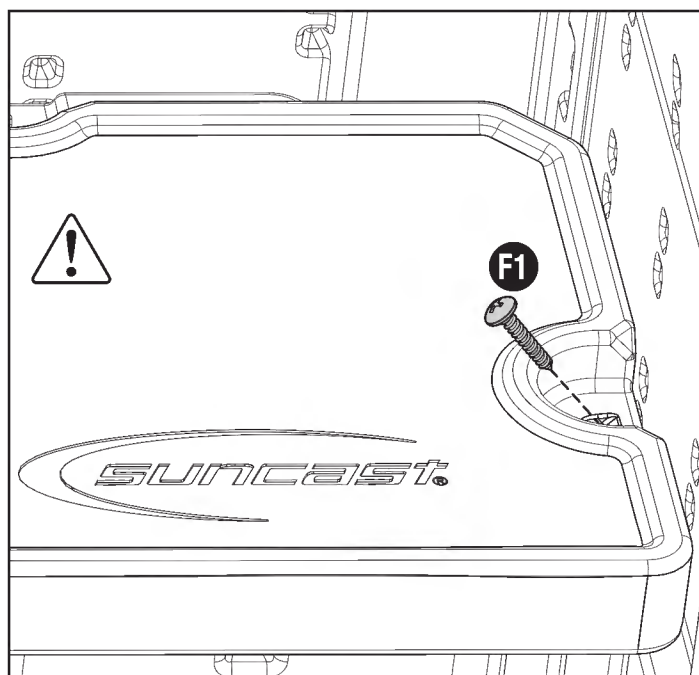


(F1) x8

Using 8 screws (F1), secure shelf (H) to shed at the locations indicated.



IMPORTANT: Screws (F1) need to be fastened on an angle for maximum thread engagement.

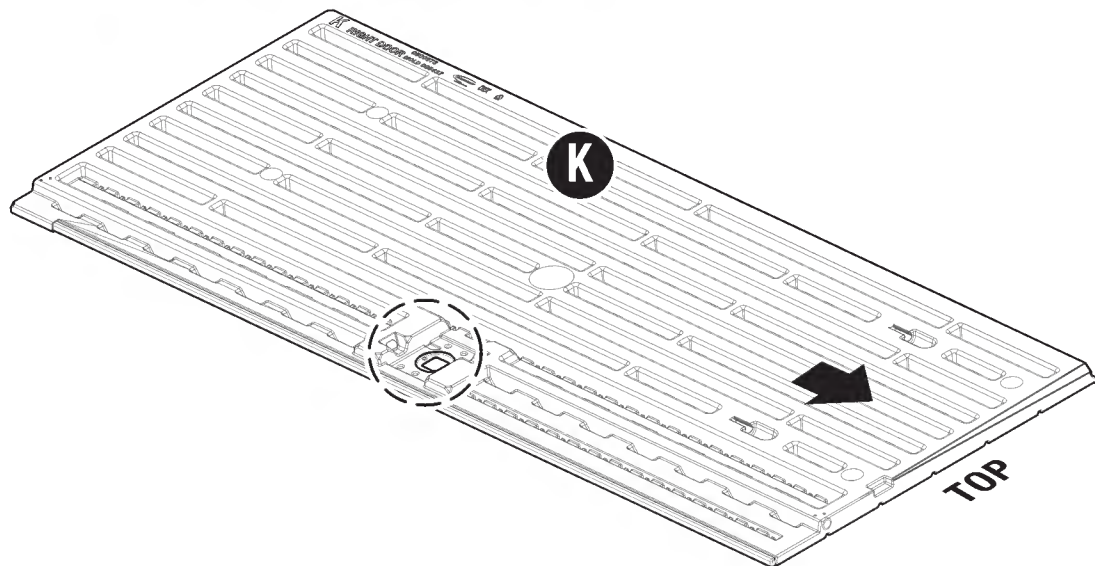
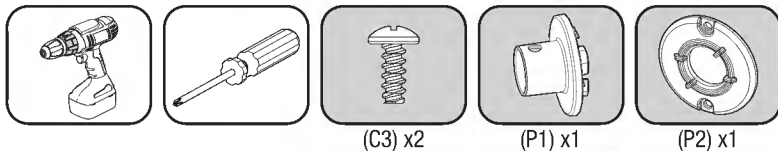


Assembly - Doors

Required Hardware/ Steel Kits



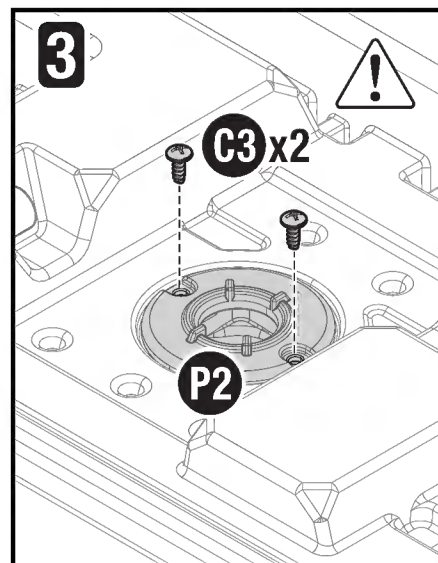
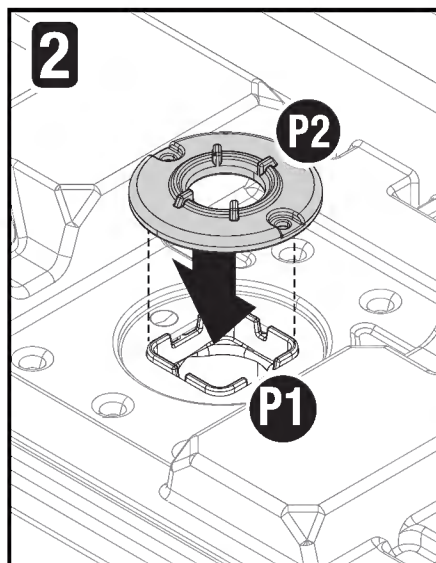
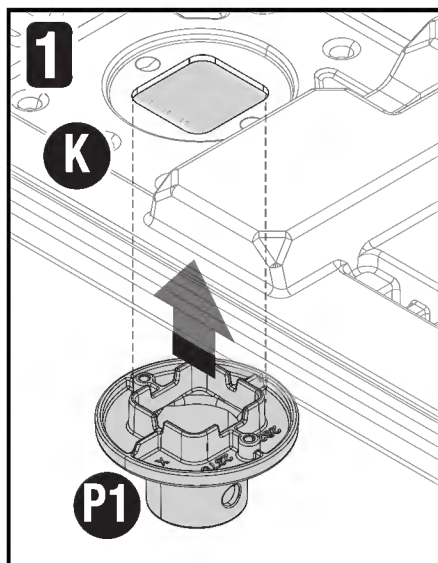
24



Place right door (**K**) on a flat surface with the **back side of door facing up**.

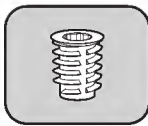
- 1) From the **front** side of door, insert locking collar (**P1**) into door handle opening as shown.
- 2) While holding locking collar (**P1**) in position, from the **back** side of the door (**K**), insert right lock bushing (**P2**) and align with locking collar (**P1**).
- 3) Using 2 bolts (**C3**), secure locking collar (**P1**) to right lock bushing (**P2**).

IMPORTANT: Lock bushing should be positioned with the screw holes facing the top and bottom ends of the door.

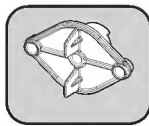


25

4 mm



(B1) x2

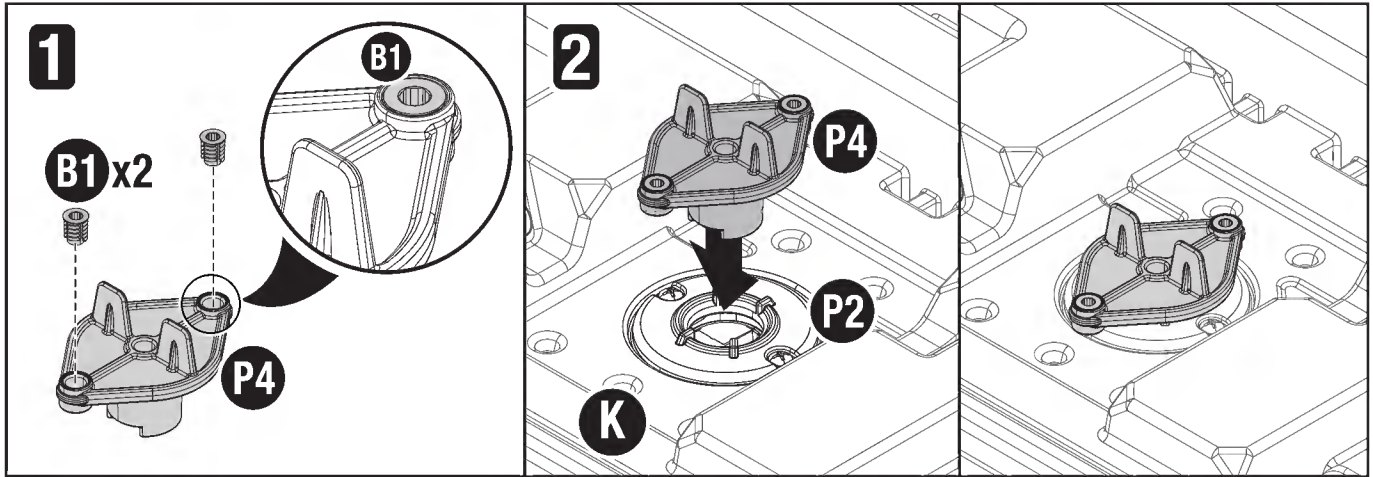


(P4) x1

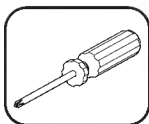
1) Thread 2 nut inserts (**B1**) into lock cam (**P4**).

2) Once nut inserts are installed, position lock cam (**P4**) so that it rests atop of the right door bushing (**P2**), **orientated as shown**.

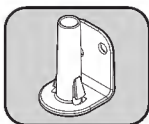
Note: Nut inserts are secure once they are flush with the surface.



26



(A1) x4

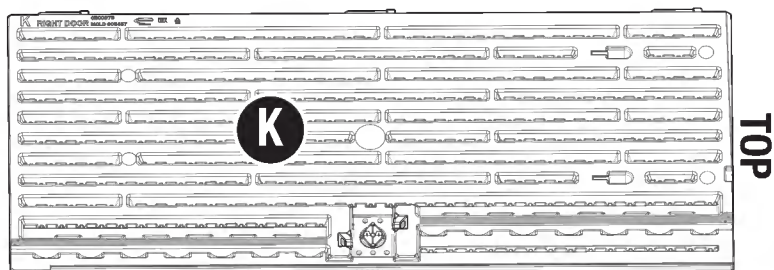


(P5) x2

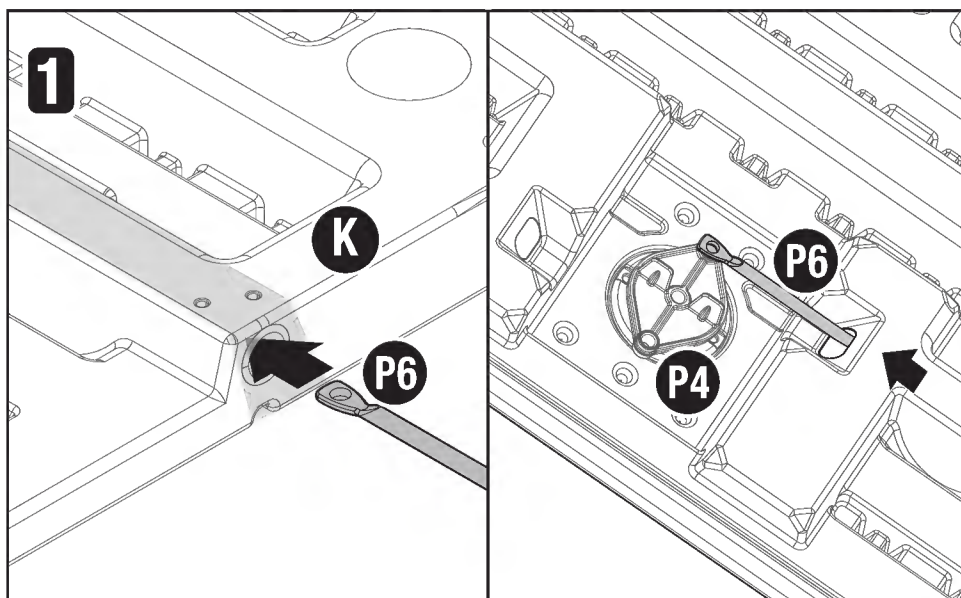


(P6) x2

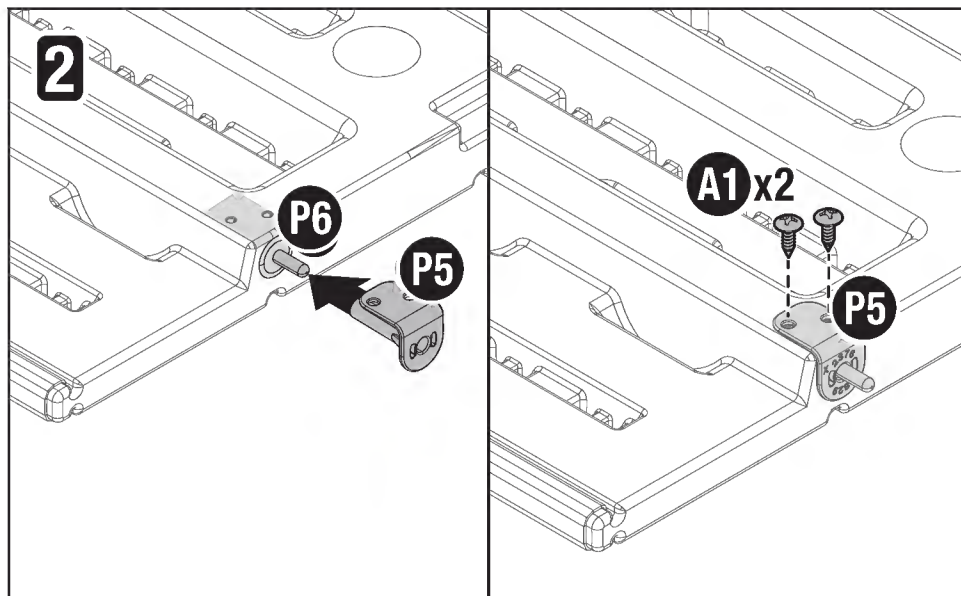
Identify upper and lower locking rod channels on right door (**K**).



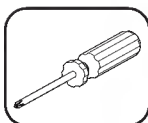
- 1) Starting at the top of the right door (**K**), insert locking rod (**P6**) into upper channel. Push locking rod (**P6**) through channel until it aligns with the lock cam (**P4**) as shown.



- 2) While holding locking rod (**P6**) in place, insert 1 rod bushing (**P5**) over the locking rod and into the top of right door (**K**) and secure with 2 screws (**A1**). Repeat for lower rod channel.



27



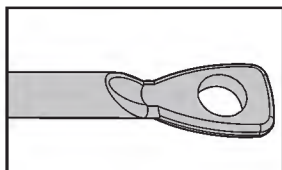
(C1) x2



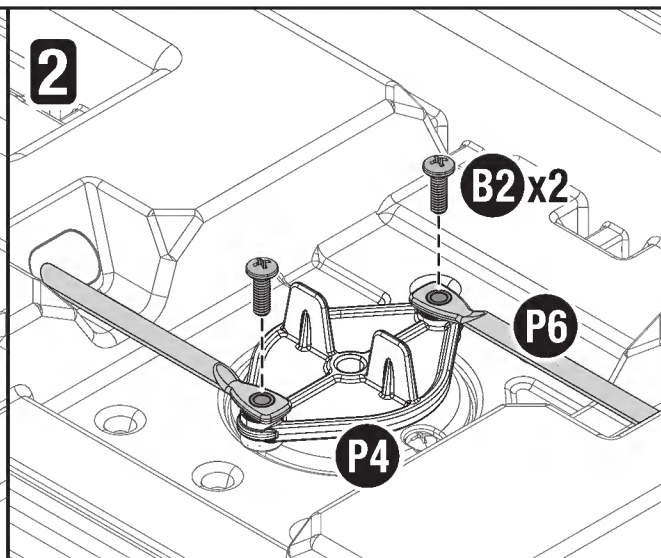
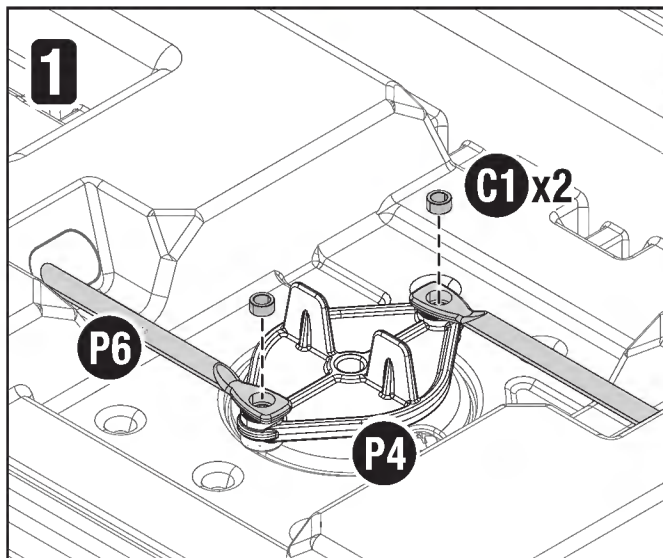
(B2) x2

1) Align the center of each locking rod with the openings on the lock cam (P4). Insert 1 steel spacer (C1) into the opening of each locking rod (P6).

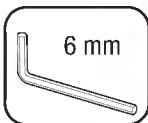
2) Secure each rod (P6) to lock cam (P4) with 1 bolt (B2).



IMPORTANT: Orientation is critical. Locking rod (P6) can be rotated within the channel to correct orientation.



28



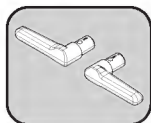
6 mm



(C2) x1



(C4) x1

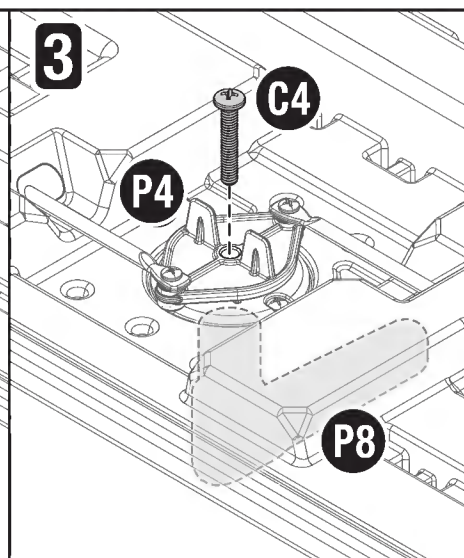
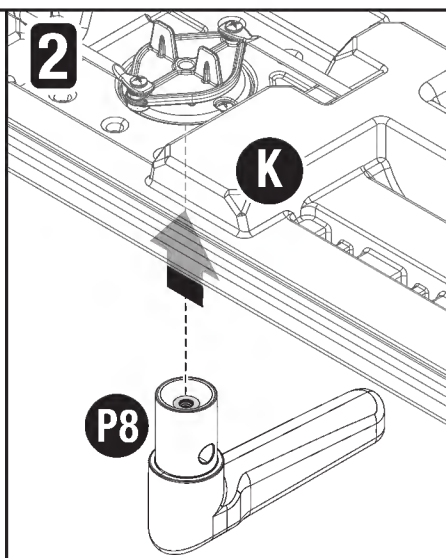
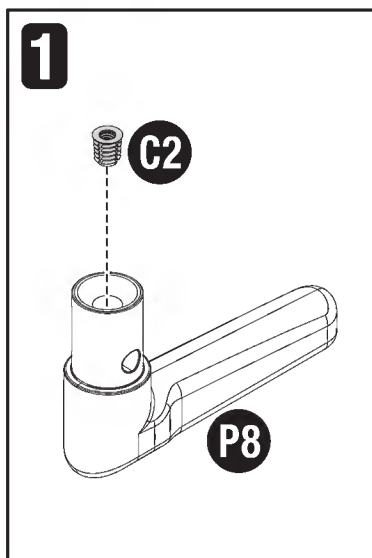


(P8) x1

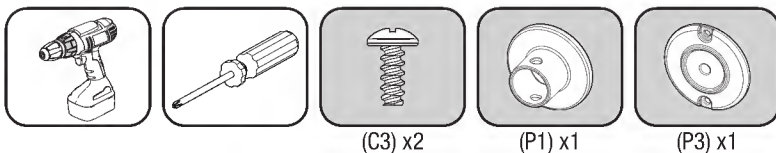
1) Thread 1 nut insert (C2) into the center of 1 door handle (P8).

2) From the **front** of right door (K), insert handle (P8) through lock assembly.

3) From the **back** of door, thread 1 bolt (C4) through lock cam and door handle (P8). Tighten securely.



29



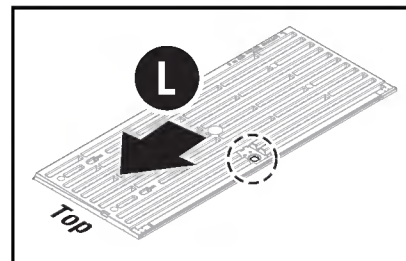
(C3) x2

(P1) x1

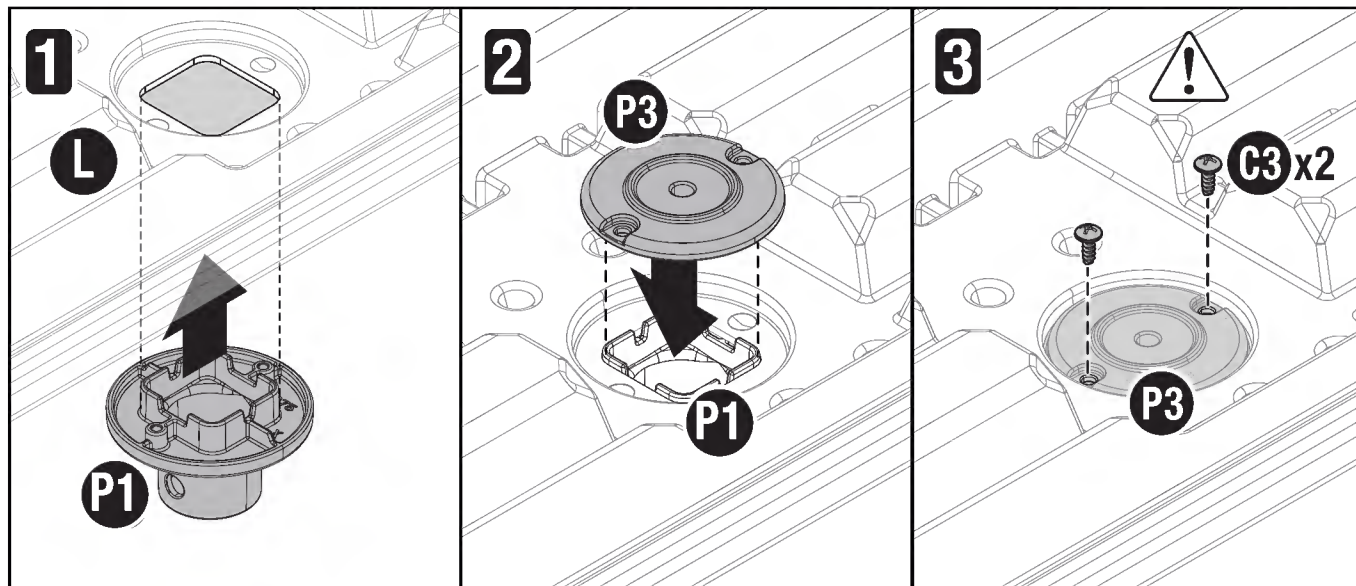
(P3) x1

Place left door (L) on a flat surface with the back side of the door facing up.

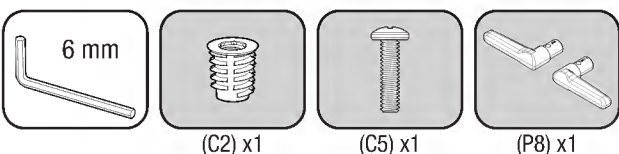
- 1) From the **front** side of the door, insert locking collar (P1) into door handle opening.
- 2) While holding locking collar (P1) in position, from the **back** side of door (L), insert left lock bushing (P3) and align with locking collar (P1).
- 3) Using 2 bolts (C3), secure locking collar (P1) to left lock bushing (P2).



IMPORTANT: (P3) should be positioned with the screw holes facing the top and bottom ends of the door.



30

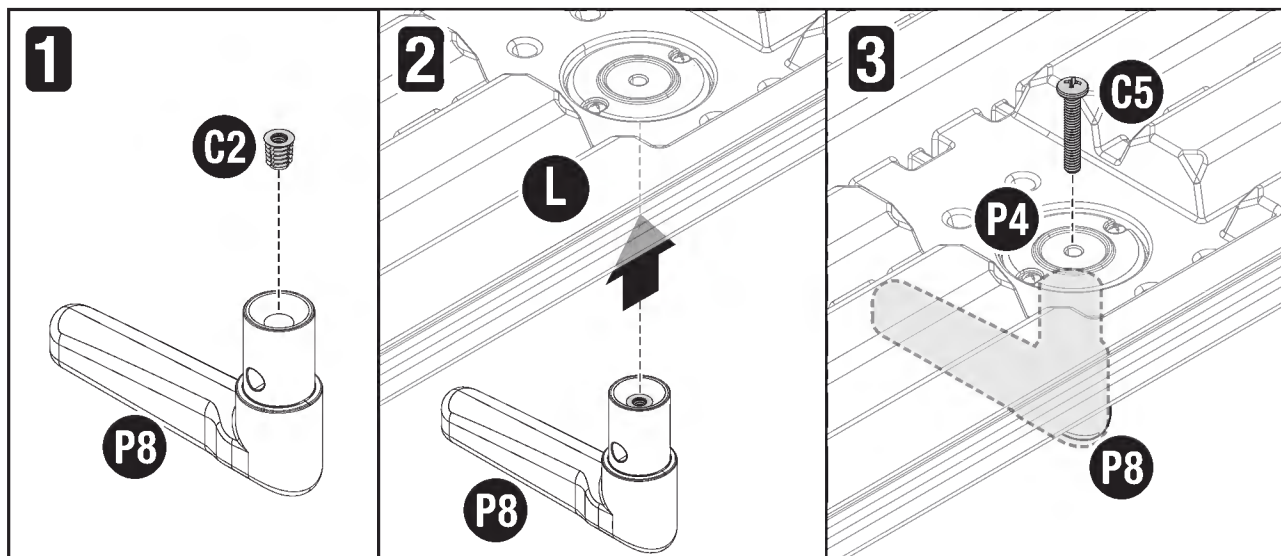


(C2) x1

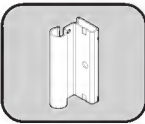
(C5) x1

(P8) x1

- 1) Thread 1 nut insert (C2) into the center of door handle (P8).
- 2) From the **front** of the left door door (L), insert handle (P8) through lock assembly.
- 3) From **back** of door, thread 1 bolt (C5) through lock assembly and door handle (P8). Tighten securely.



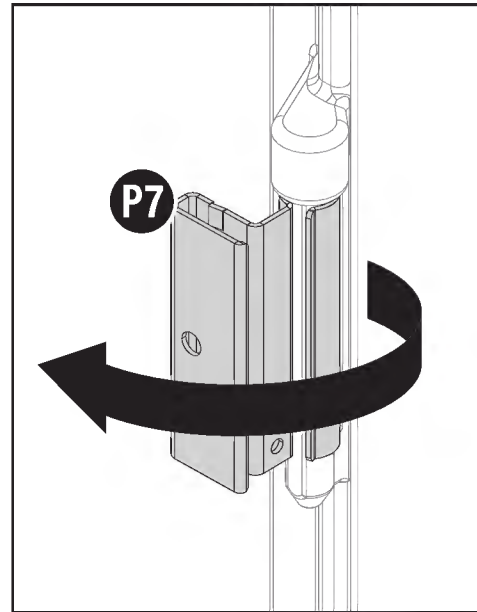
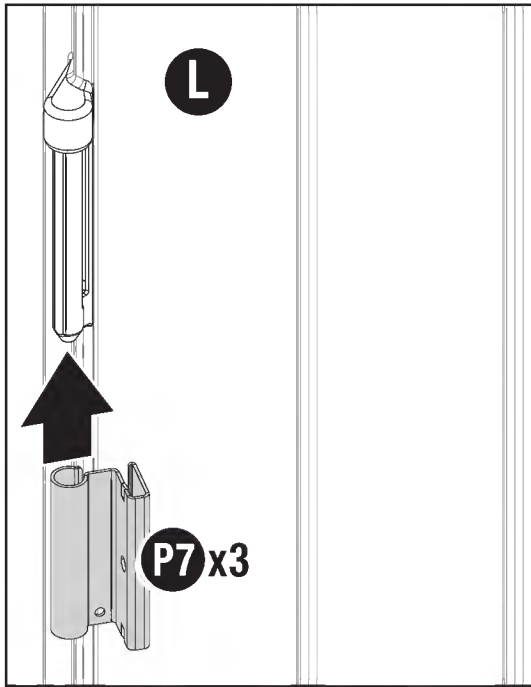
31



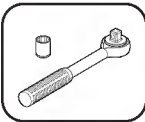
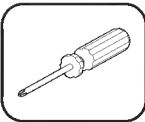
(P7) x3

Hold 1 door hinge (**P7**) in open position against left door (**L**). From the bottom of the hinge pin, slide door hinge (**P7**) onto hinge pin and then rotate it away from the door (**L**).

Repeat to install 2 additional door hinges (**P7**) to left door.



32



(D1) x3

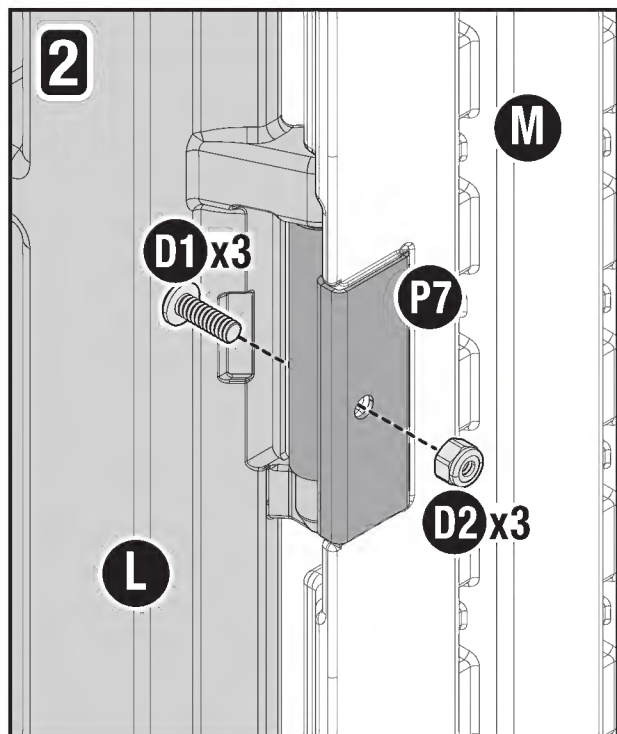
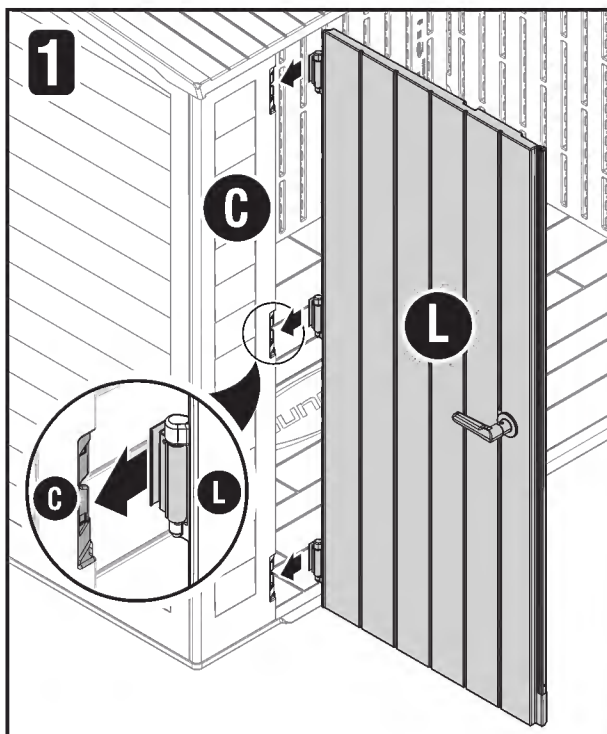


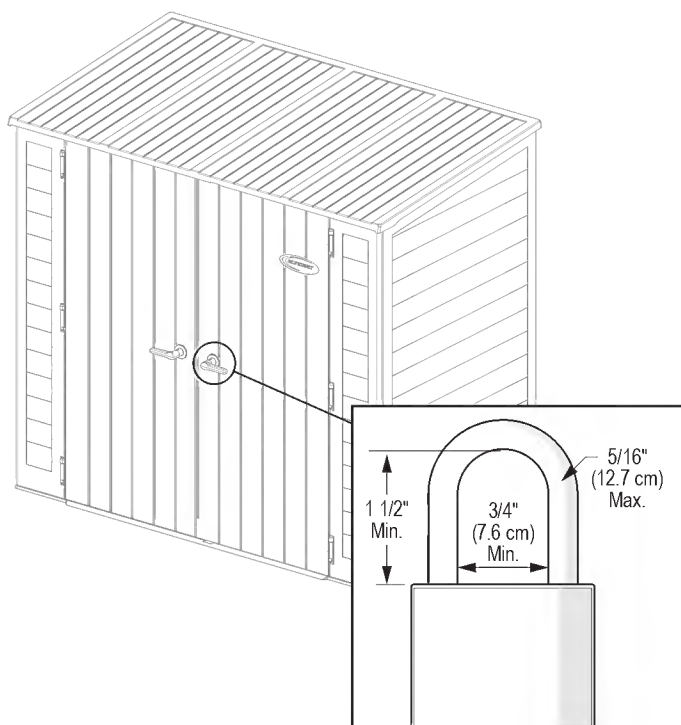
(D2) x3

1) Position left door (**L**) against the left front (**C**) as shown. Slide each door hinge (**P7**) onto the hinge receptacles of left front (**C**).

2) From inside of shed, secure each door hinge (**P7**) with 1 bolt (**D1**) and nut (**D2**). Tighten securely.

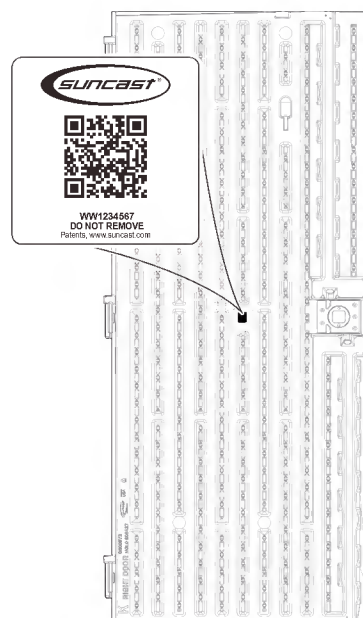
Repeat steps 31-32 for right door (**K**).





Attach a 5/16" lock (not provided) through the right door handle to properly secure shed. Right door handle must be in closed position (as shown) to engage locking rods.

Note: To maintain warranty coverage, the product should be padlocked at all times when not in use.



This label located on the inside of door contains information regarding your product. The QR code is a direct product link to the product registration page on the Suncast website. The codes at the bottom of the label are specifically related to your product. Please have these numbers available should you need to contact Suncast.

