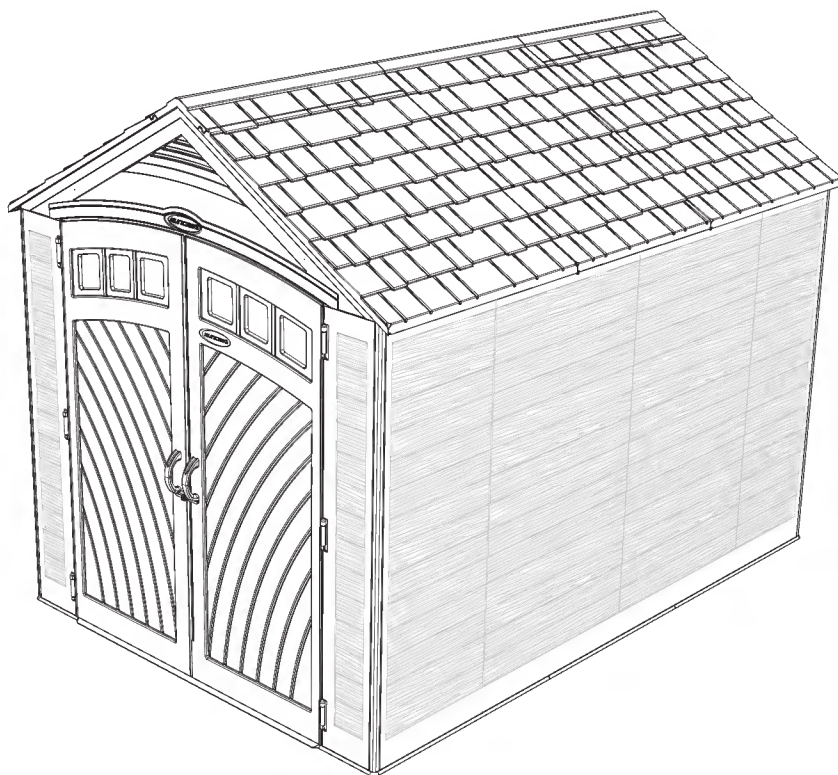
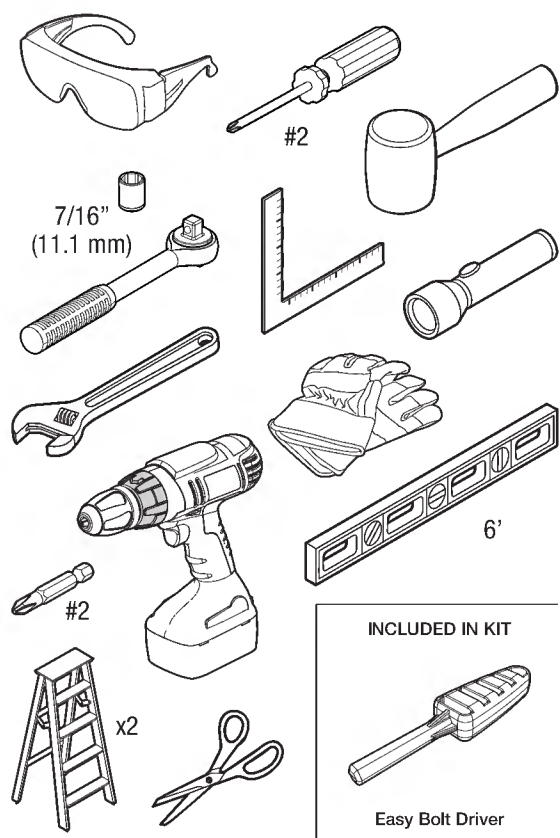


# BMS8005 Vista™ Storage Shed

## ASSEMBLY INSTRUCTIONS

### Tools Required



Scan QR Code for product assembly video.

**suncast®**

Smart. Inside & Out®

# Register within 90 days of purchase to activate Warranty!

Registration is not required for products with a warranty term of 90 days or less.



1. Verify warranty term of your product by visiting **[www/suncast.com/warranty](http://www.suncast.com/warranty)** (products with a warranty term of 90 days or less do not require registration)
2. Complete registration: fill out the form and upload a copy of your receipt by visiting **<https://support.suncast.com>** or scanning the QR code

## Have Questions?

For product questions, assembly assistance, replacement parts and more:



## Before You Begin...

- **Consult your local authorities for any permits required to construct shed.**

Prior to the construction of your shed, check with the local building code official to review any required permits or building limitations.

- **A level and sturdy foundation is required before shed construction can begin.**

Site preparation information is available later on in this manual. A foundation that differs from the specifications within this manual could prevent proper assembly and may damage parts.

- **Read instructions thoroughly prior to assembly.**

This kit contains parts that can be damaged if assembled incorrectly or in the wrong sequence.

- **Please follow instructions.**

Suncast is not responsible for replacing parts lost or damaged due to incorrect assembly.

- **Assistance is required during entire assembly.**



Indicates at least 1 additional adult is needed to complete this step.



Indicates caution is recommended when using a power drill.

### **IMPORTANT**

**COMPLETE SITE PREPARATION AND FOUNDATION CONSTRUCTION BEFORE UNPACKING ALL PARTS.**

**OPEN ALL BOXES FIRST AND NEATLY LAYOUT PARTS. SMALL PARTS MAY BE CONTAINED IN EACH BOX. PLEASE REFERENCE THE PARTS LIST WITHIN THIS MANUAL TO VERIFY ALL PARTS ARE PRESENT.**



## Caution

- Power tools can apply excessive torque resulting in damage to the product. If you choose to use a power drill to assemble the product, Suncast recommends using a variable speed, cordless drill with a variable clutch set at the lowest setting. A #2 Phillips driver bit is compatible with the hardware provided. Suncast makes no guarantee that following this recommendation will prevent damage to the product. Damage to parts due to over-torque are not covered under Suncast's limited-warranty.
- Proper site preparation required.
- Shed not intended for storage of flammable, caustic or corrosive materials.
- Shed not intended for habitation or for use by children.
- **DO NOT** stand, sit, or store items on storage shed roof.
- Repair or replace broken parts immediately.
- **DO NOT** place near objects that are hot or can become hot.
- Heavy articles should not be leaned against the walls, as this may cause panel distortion and permanent damage.
- Suncast is not responsible for damage caused by weather or misuse.
- This kit contains parts with sharp edges. Please be careful when handling, use of work glove is recommended.
- **WHEN DRILLING THROUGH METAL**, beware of burrs, shavings and other sharp edges. Safety glasses are strongly recommended.
- **DO NOT** place in areas near highly reflective surfaces (Note: Low-E windows are more reflective than standard windows and may affect the longevity of the product).
- Product is water resistant and not waterproof. Locate unit away from gutter and down spouts for optimal performance.



## Shed Care and Maintenance

- At regular intervals, inspect your shed to make sure that assembly integrity has been maintained.
- Periodically check that the location you have chosen to set your shed is still level.
- Keep roof clean of snow and leaves.
- To maintain the look of your product, we recommend cleaning it at regular intervals with mild soap and water. **DO NOT** use bleach, ammonia or other caustic cleaners, and **DO NOT** use stiff bristle brushes. Failure to perform cleaning at regular intervals could result in permanent staining of the plastic. This type of damage is not covered under warranty.



## Assembly Day Tips

- **DO NOT** attempt to assemble on a day with strong winds.
- Set aside appropriate amount of time to completely assemble shed. An incomplete shed assembly may pose a safety hazard.
- Make sure you have assistance nearby to lift and secure parts in place.
- Wear light duty work gloves while assembling shed.
- Once roof is assembled, a flashlight may be of use when assembling smaller components inside shed.
- **DO NOT** use a torque wrench or hand drill to tighten Easy bolts. Use provided Easy Bolt Driver ONLY.
- Suncoast provides extra hardware for small fasteners for customer convenience. In some cases, there will be extra small fasteners once the assembly is complete.

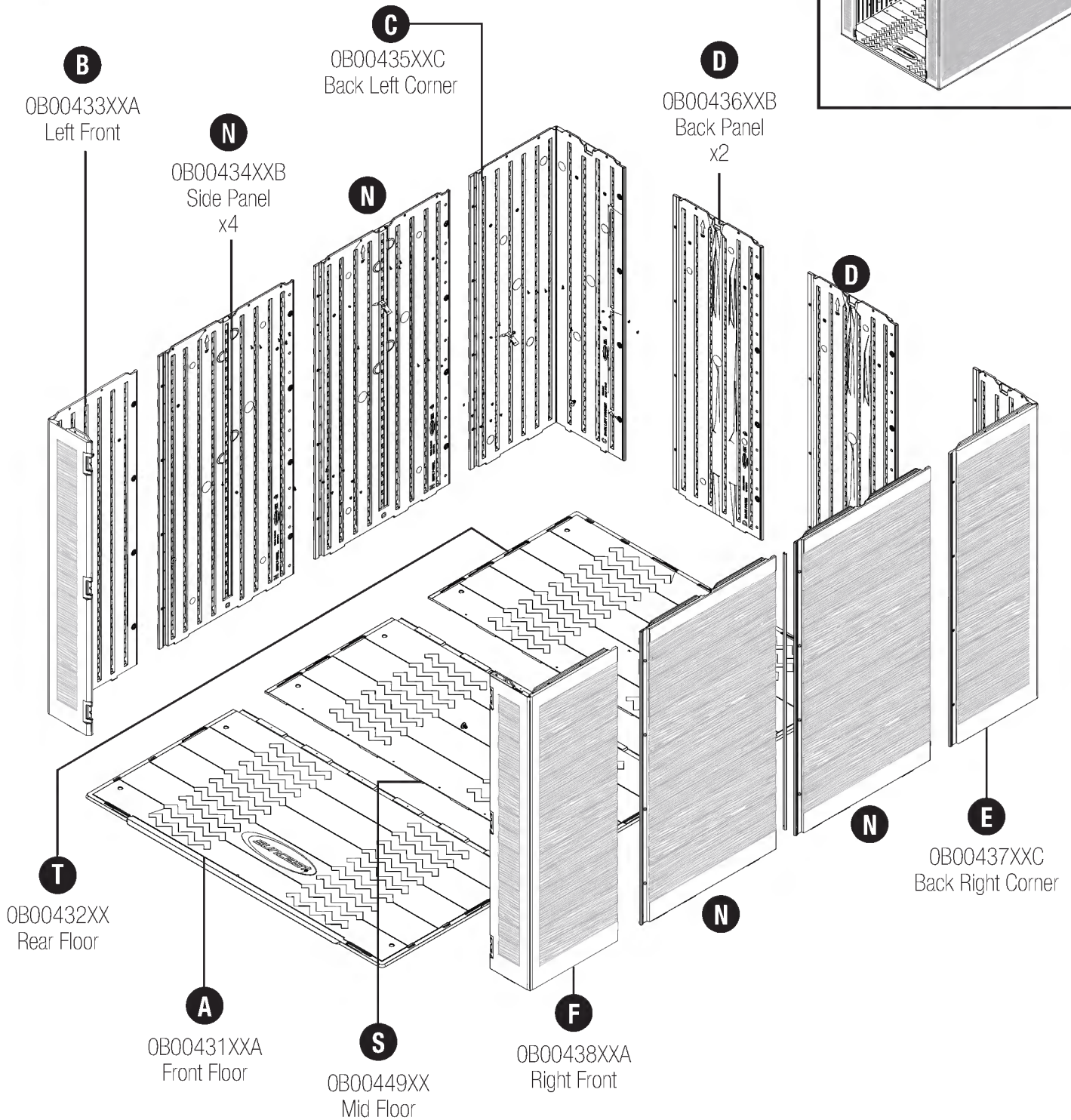
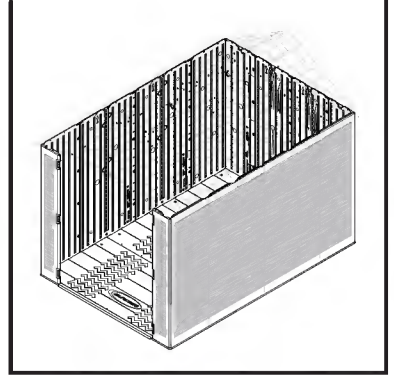
**Note:** This product contains parts that are used in different orientations to construct the shed. Please take note of the orientation of the parts shown throughout this instruction manual. Failure to follow instructions could result in damage to parts. Suncoast is not responsible for replacing parts lost or damaged due to incorrect assembly.

# Parts - Walls and Floors

## IMPORTANT

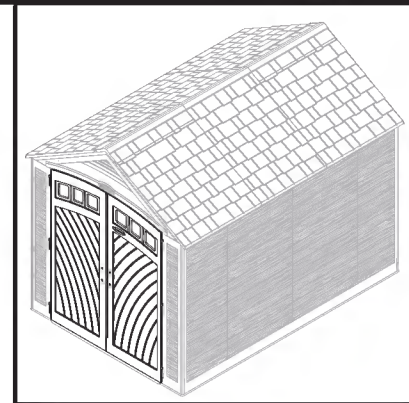
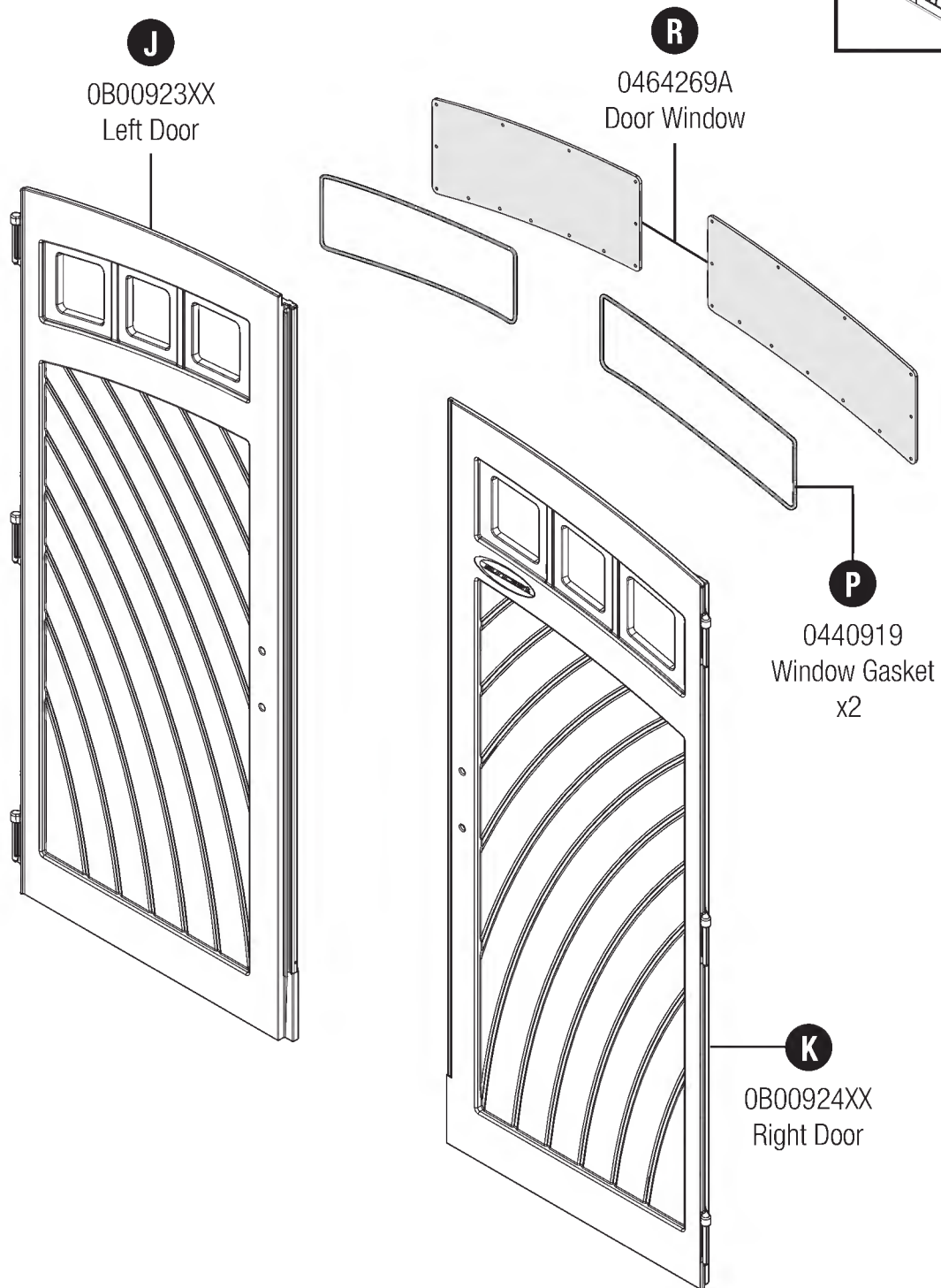
COMPLETE SITE PREPARATION AND FOUNDATION CONSTRUCTION BEFORE UNPACKING ALL PARTS.

OPEN ALL BOXES FIRST AND NEATLY LAYOUT PARTS. SMALL PARTS MAY BE CONTAINED IN EACH BOX. PLEASE REFERENCE THE PARTS LIST WITHIN THIS MANUAL TO VERIFY ALL PARTS ARE PRESENT.

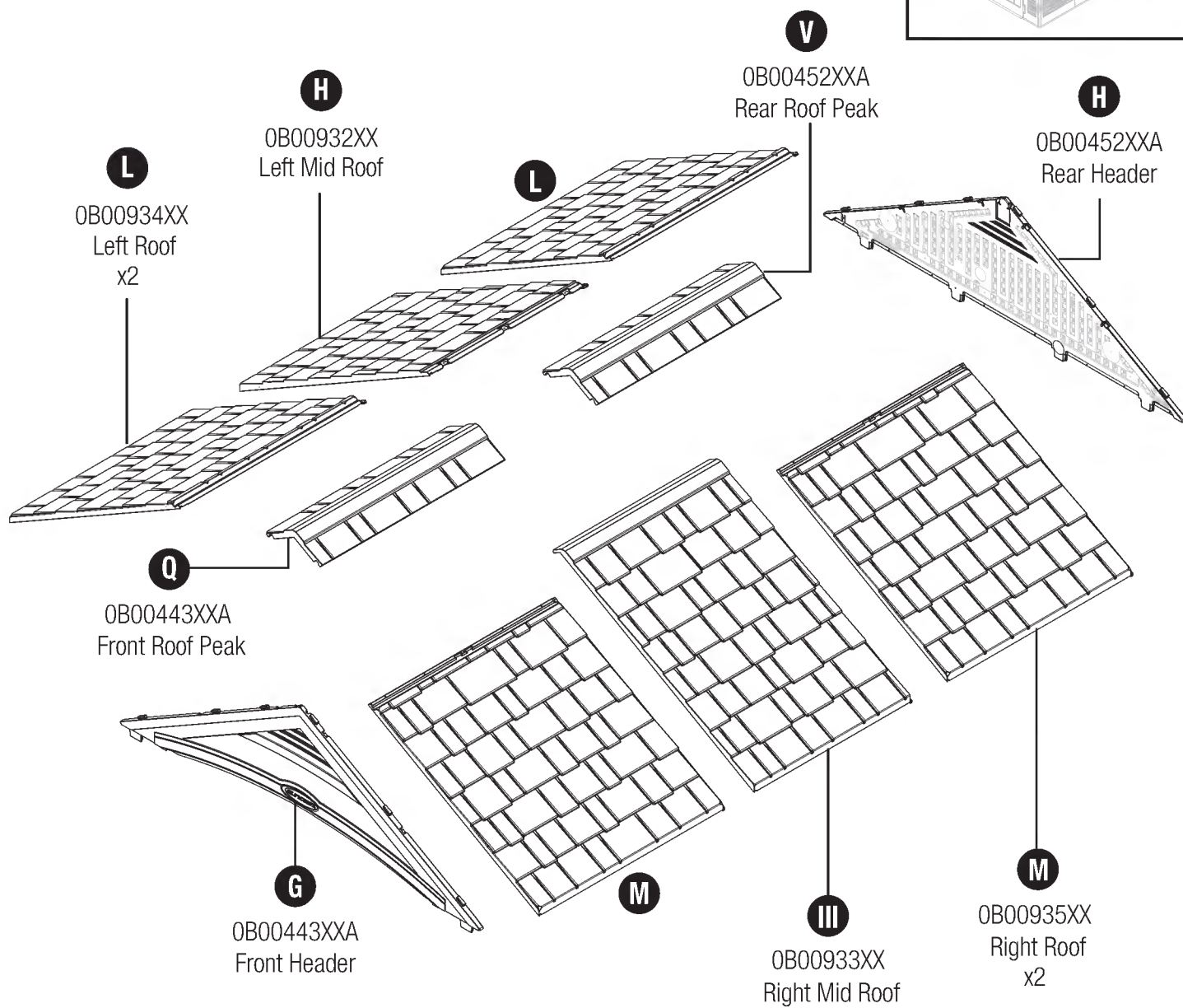
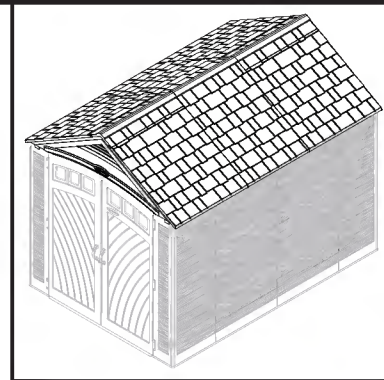




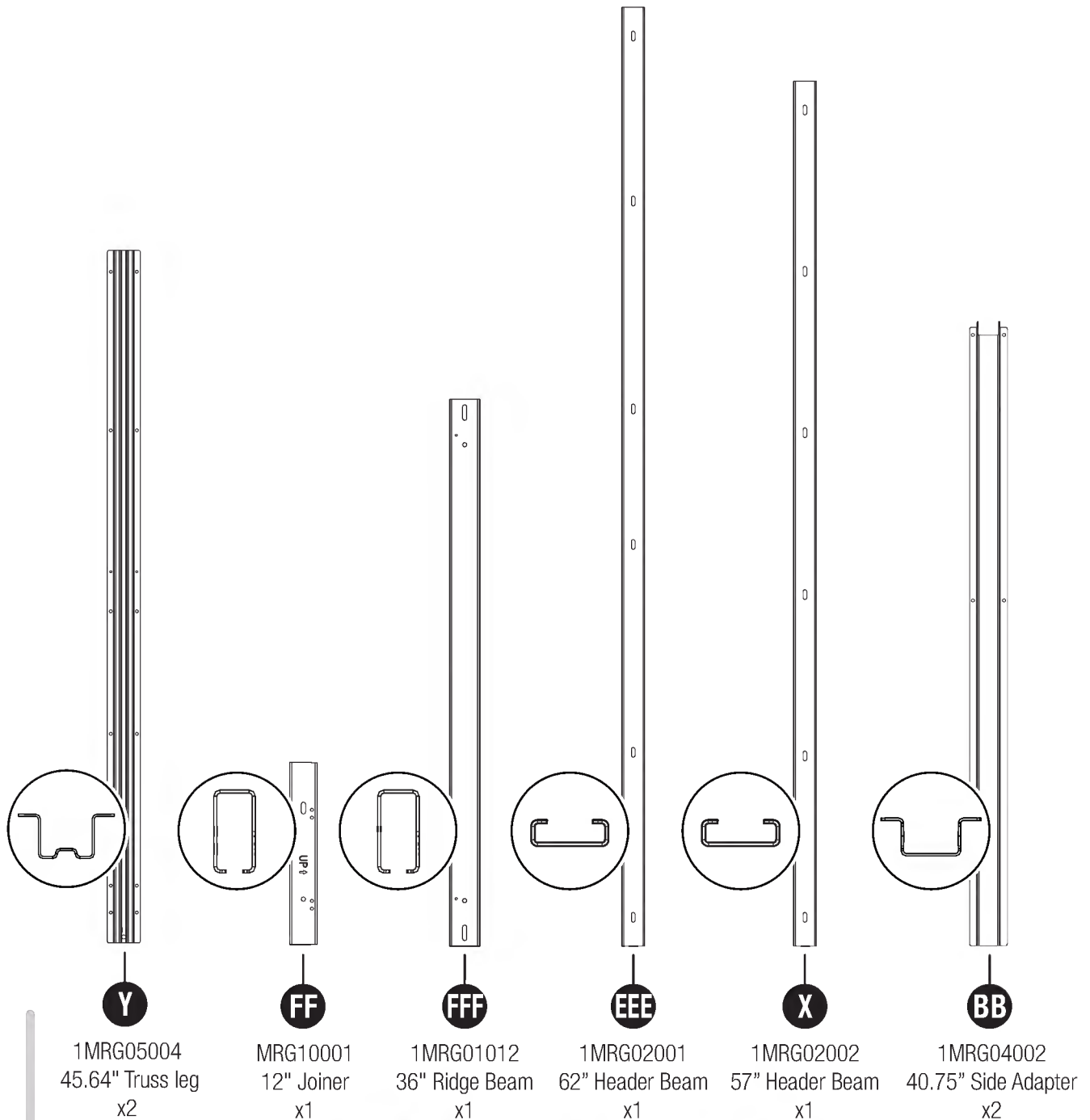
## Parts - Doors



# Parts - Roof



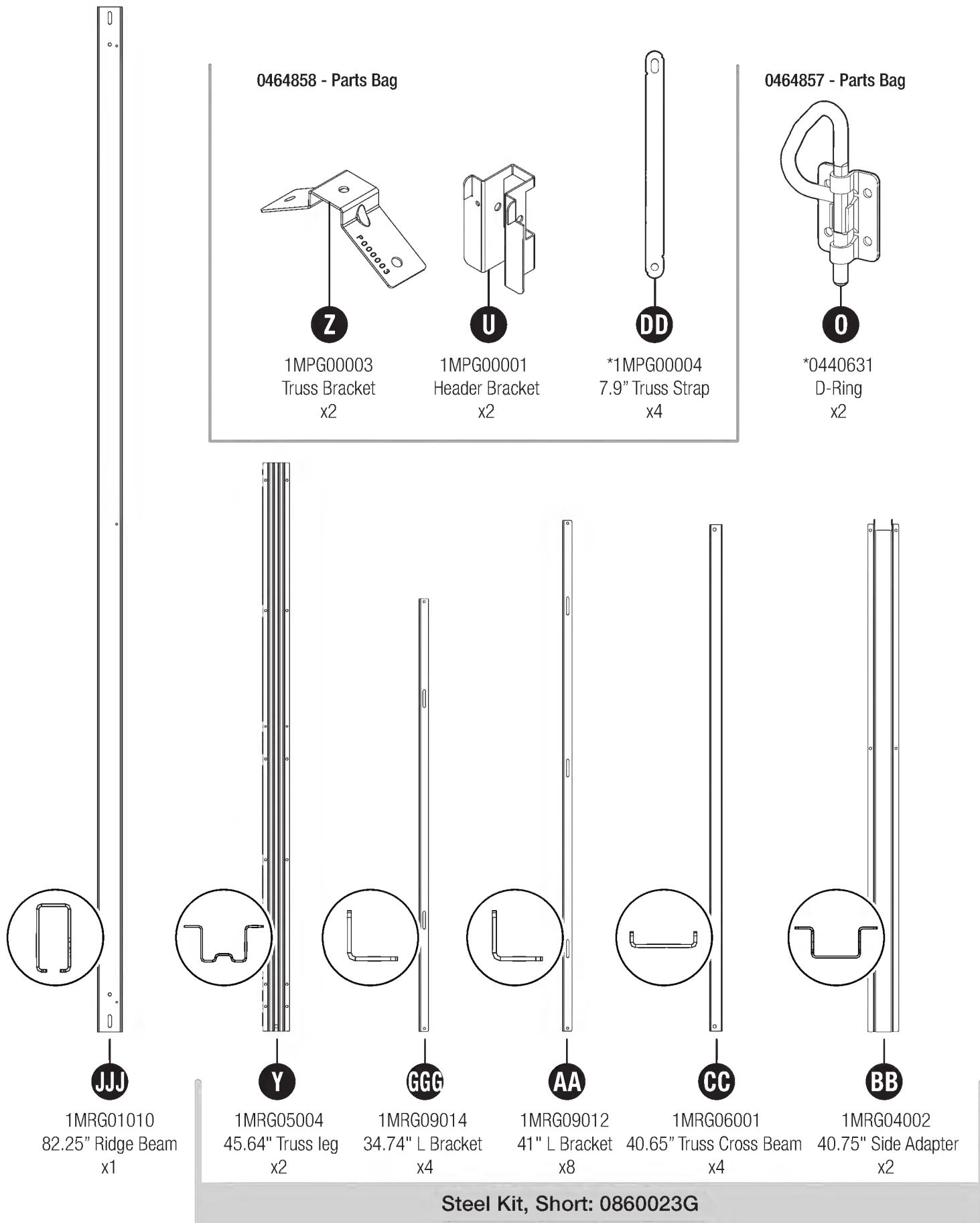
## Parts - Steel



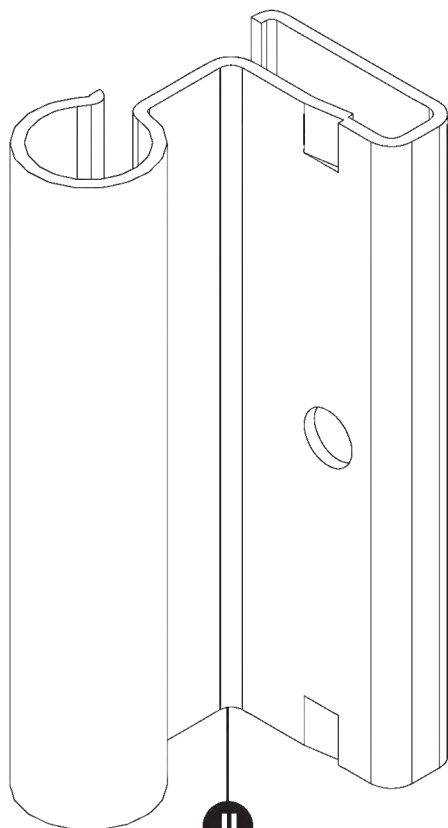
Steel Kit, Short: 0860024G



# Parts - Steel

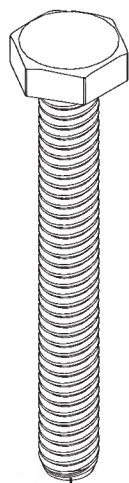


# Parts - Hardware

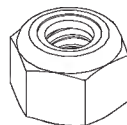


OMP000002 – Metal Hinge Plate  
x6

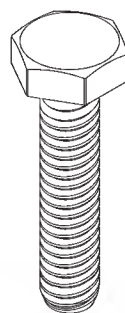
0480340 – Hardware bag x2



.25" x 2" Hex Bolt  
x4 (Per bag)



.25" Locking Nut  
x6 (Per bag)



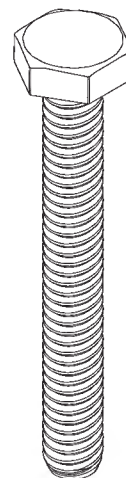
.25 - 20 x 1" Hex Bolt  
x2 (Per bag)

0480375 –  
Hardware bag x3

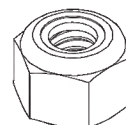


.625" Screw  
x105 (Per bag)

0480374 – Hardware bag x2

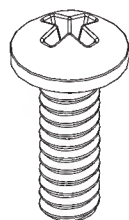


.25" x 2" Hex Bolt  
x2 (Per bag)

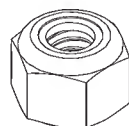


.25" Locking Nut  
x2 (Per bag)

0480337 – Hardware bag



.25" x .75" Screw  
x6



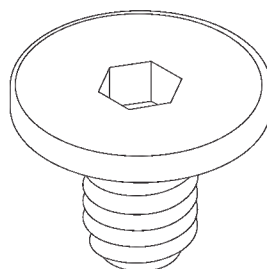
.25" Locking Nut  
x6

0480452 – Hardware bag

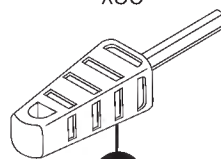


#8 x .625 Screw  
x9

0480587 – Hardware bag

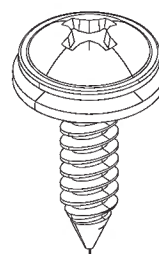


Easy Bolt 7/8"  
x38

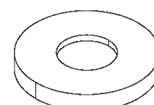


\*Easy Bolt Easy Driver

0480443 – Hardware bag



#10 x .75" Screw w/ Washer  
x25

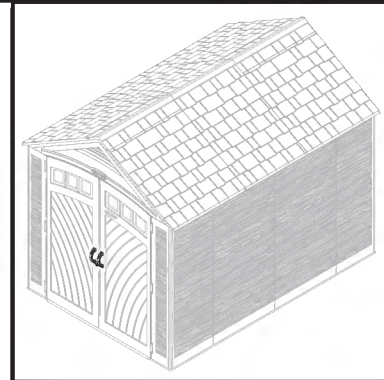
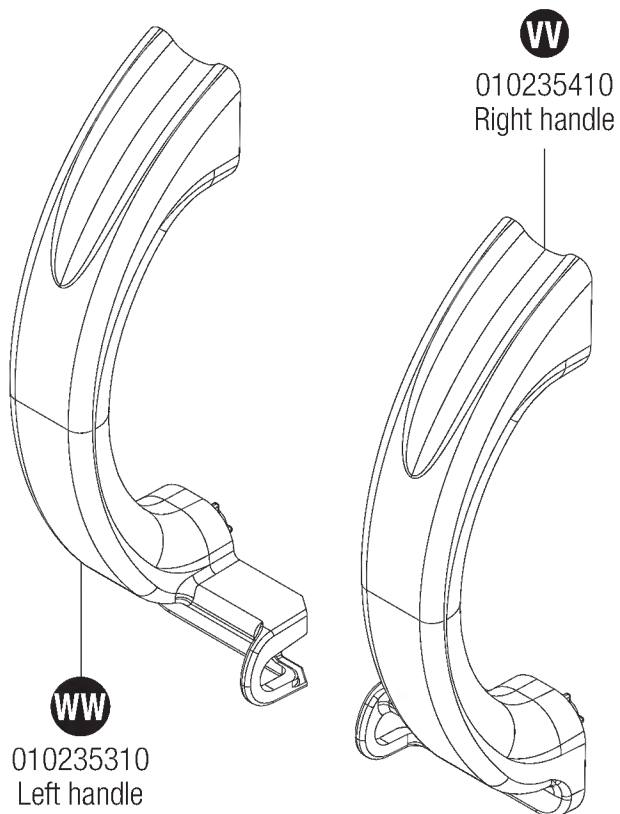


#10 Rubber Sealing Washer  
x25

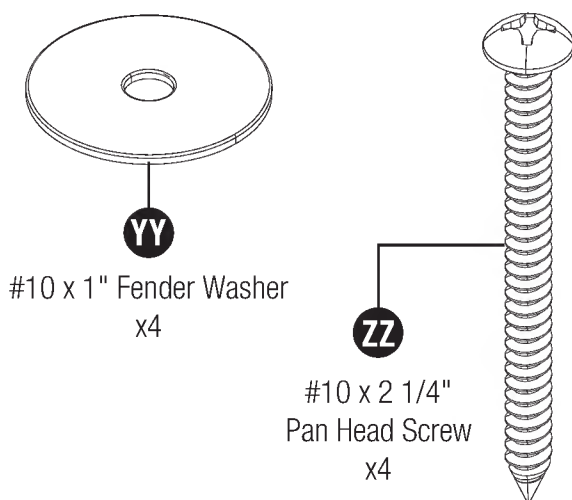
Hardware shown at actual size (\*unless otherwise noted). Extra hardware provided. Not all are used.

## Parts - Door Handle Kit

### 0463282- Door Handle Kit



### 0480370 - Hardware Bag



# Site Preparation and Platform Construction

Materials **NOT** supplied with Shed Kit

## Important:

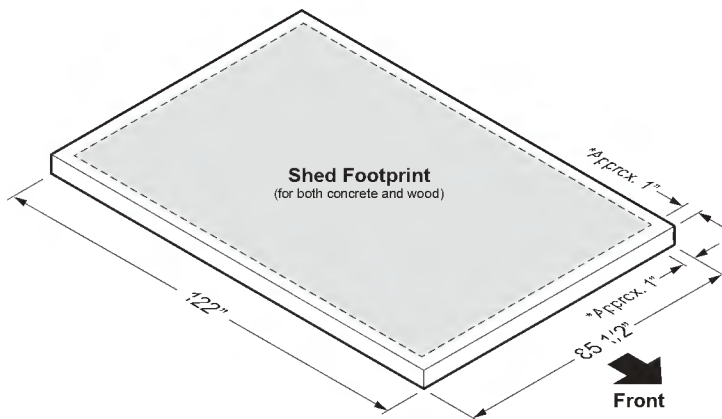
- **Site preparation is required for this shed. Placing the shed on a properly constructed, square, flat, smooth and level foundation, as described below, is required. Without a properly constructed foundation, settling will eventually occur, causing distortion and damage to the shed. Suncast is not responsible for replacing parts damaged or property lost due to incorrect foundation construction or improper assembly. Warranty requires a properly constructed foundation to which the shed must be anchored as instructed below.**
- **Complete the site preparation and foundation construction before unpacking parts and beginning assembly. For tips on site preparation, go to [www.suncast.com](http://www.suncast.com), consult retailer, or local code.**

## Site Preparation

1. Consult your local authorities for building codes and covenants before beginning foundation or erecting shed.
2. Before any digging, check with local utilities to determine location of buried cables, pipes, etc.
3. Decide which type of foundation is most suitable for your installation. The foundation surface must be square, flat, smooth and level. Follow the below guidelines for foundation options.
4. Complete the foundation preparations as follows:
  - A vapor barrier may be applied over the foundation to prevent excessive condensation in the shed. Follow local building codes for a proper vapor barrier.
  - The ground should slope away from the foundation area to provide drainage.
  - Placing the shed on surfaces made of materials such as patio blocks or pavers is not acceptable for long-term support structure or smooth surface. Use of these will void the warranty.

### Concrete Slab

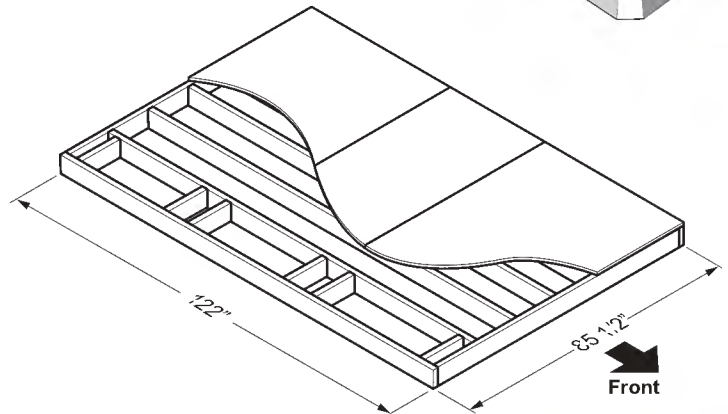
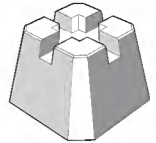
- Construct a slab of at least 4" thickness.
- The use of reinforcement bar is recommended.
- For foundations larger than specified below, the shed must rest on a continuous, level portion of the concrete slab



\* Dimensions shown are minimal for proper fit of the shed.

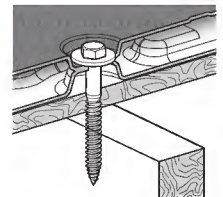
### Wood Platform

- Use exterior grade wood.
- Set the wood platform on deck footing blocks or full footing.



### **Anchoring the Floor Panels to the Foundation is required after shed assembly is complete.**

- Shed floor panels include flattened areas where anchors or lag screws are to be secured. These flat areas must be drilled through prior to securing the floor panels to the foundation.



Anchor section example

- The shed must be secured to a continuous concrete slab using 3/8" masonry anchors with 1" washers (hardware not included). **12 masonry anchors are required for the Suncast BMS8005 Shed.**

- The shed must be secured to a wood platform using 1/4"-3/8" x 3" lag screws with 1" washers (hardware not included). **12 lag screws are required for the Suncast BMS8005 Shed.**

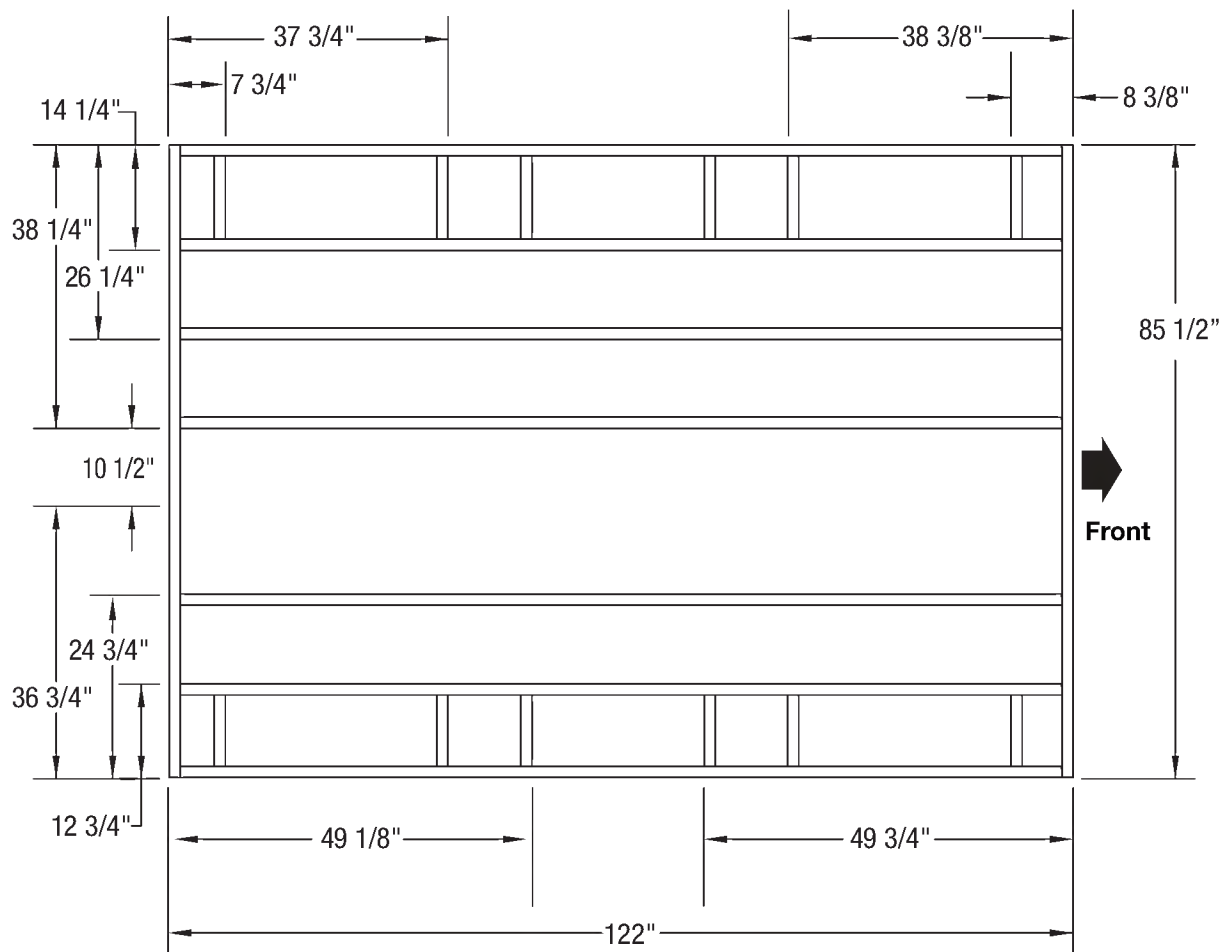
**Note:** Shed floor fastening locations are designed to align with the under-structure layout. Be sure the front of the floor panels are oriented correctly on the platform to ensure lag bolts engage with the under-structure.

## Site Preparation and Platform Construction (continued)

Materials **NOT** supplied with Shed Kit

### Wood platform critical spacing

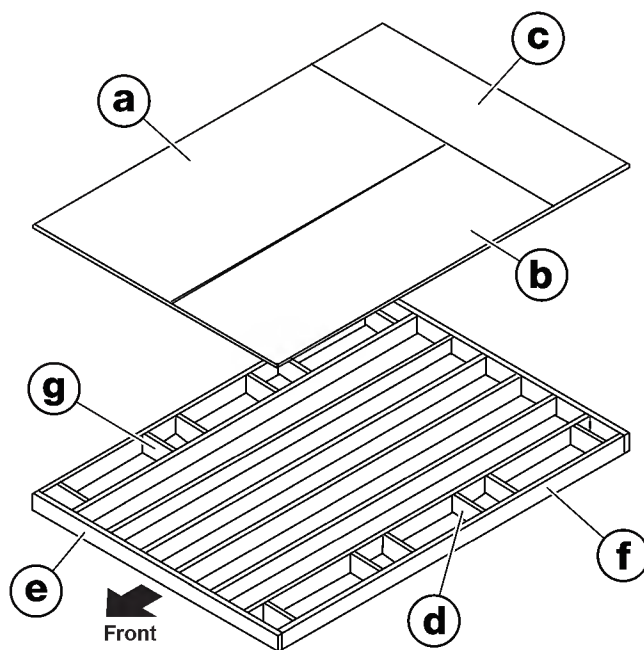
- Check all critical spacing measurements carefully.



### Wood platform materials list

Item	Qty	Size
A	1	48" x 96" x 3/4"
B	1	37-1/2" x 96" x 3/4"
C	1	26" x 85-1/2" x 3/4"
D	6	2" x 6" x 11-1/4"
E	2	2" x 6" x 85 1/2"
F	8	2" x 6" x 119"
G	6	2" x 6" x 9 3/4"

- Please note, 2 x 6 dimensional lumber is actually 1/2" smaller than noted sizes. Dimensions given presume standard 1.5" x 5.5" actual size lumber. Lumber dimensions can vary. Check lumber dimensions before cutting and make appropriate adjustments to achieve given dimensions. Cut sizes are actual size.

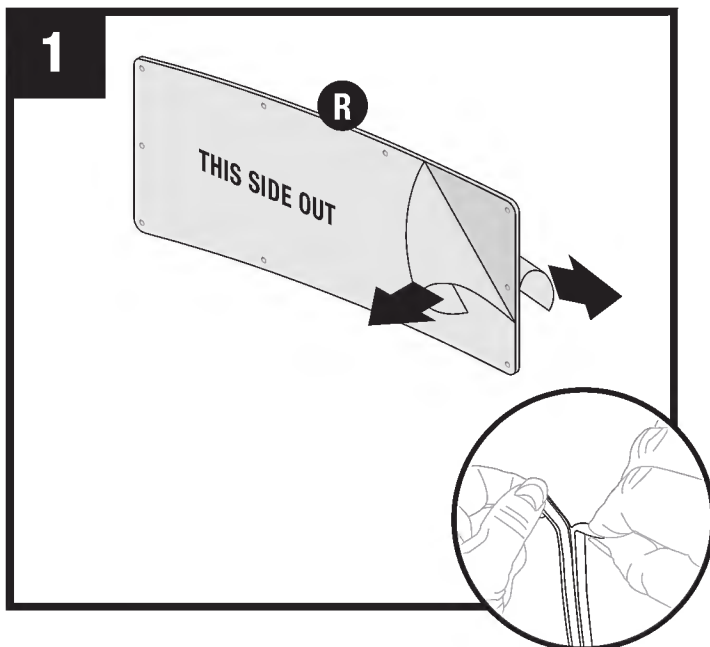




## Pre-Assembly - Door

Power tools can apply excessive torque resulting in damage to the product. If you choose to use a power drill to assemble the product, Suncoast recommends using a variable speed, cordless drill with a variable clutch set at the lowest setting. A #2 Phillips driver bit is compatible with the hardware provided. Suncoast makes no guarantee that following this recommendation will prevent damage to the product. Damage to parts due to over-torque are not covered under Suncoast's limited-warranty.

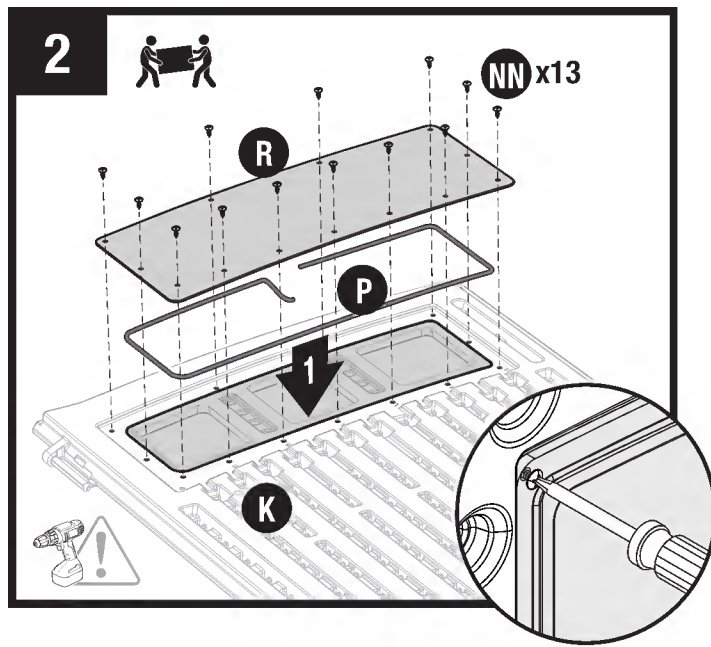
This item uses self-tapping screws in some areas. There are no pre-drilled holes. Additional force may be required to pierce the wall panel.



Peel film from both sides of left door window (R).

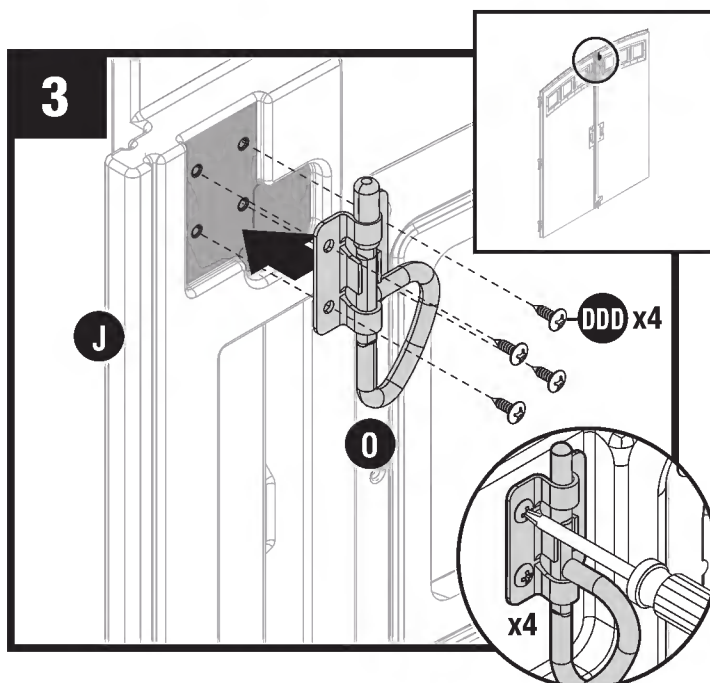
**Note:** One side of film will say "THIS SIDE OUT." Make sure this side faces out when installing window.

Separate the two window gaskets (P) and peel off backing.

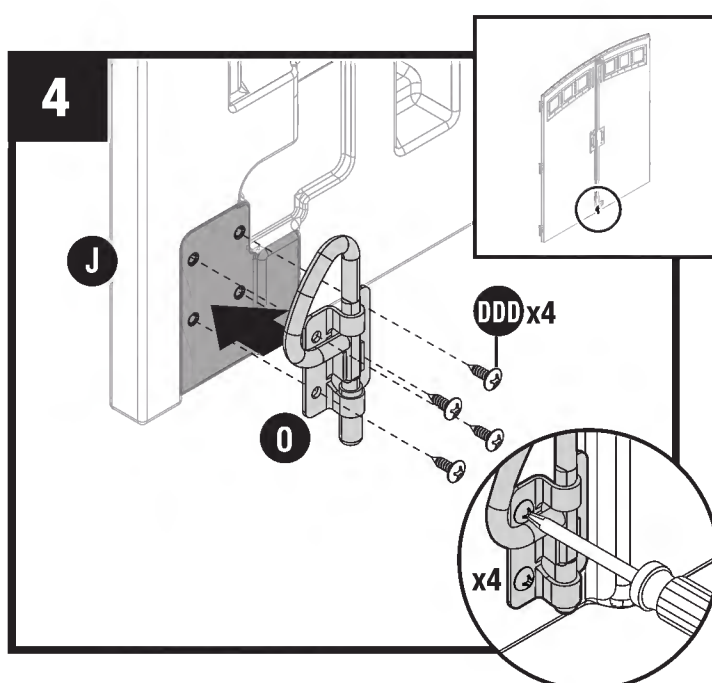


Place right door (K) on flat surface, facing down. Starting at the top-center of the window, press one end of the gasket (P) into the channel and work around the window. **DO NOT STRETCH GASKET.** Trim any excess gasket with scissors.

Lay one door window (R) over the window opening. Secure window with 13 screws (NN) and gasket (P).

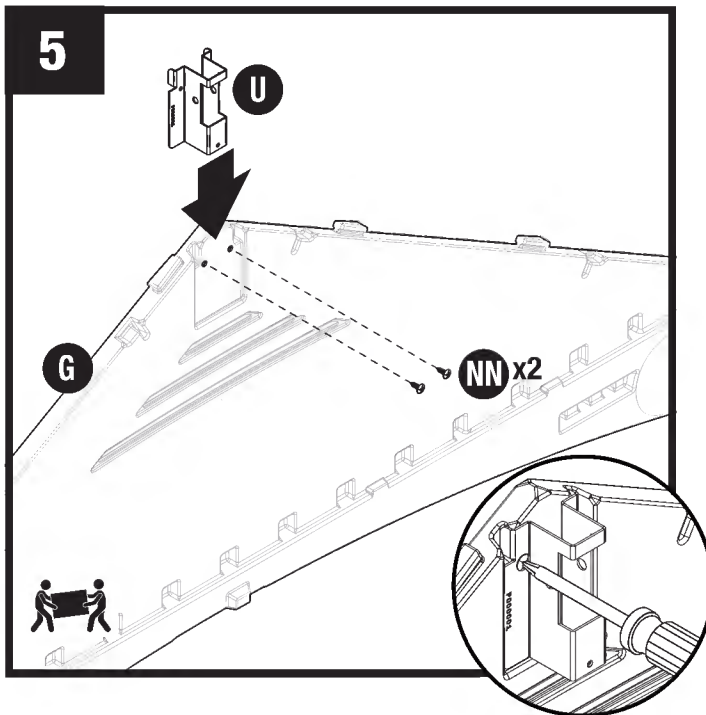


Attach one D-ring bolt (O) to the inside on the top of left door (J) as shown using four screws (DDD).

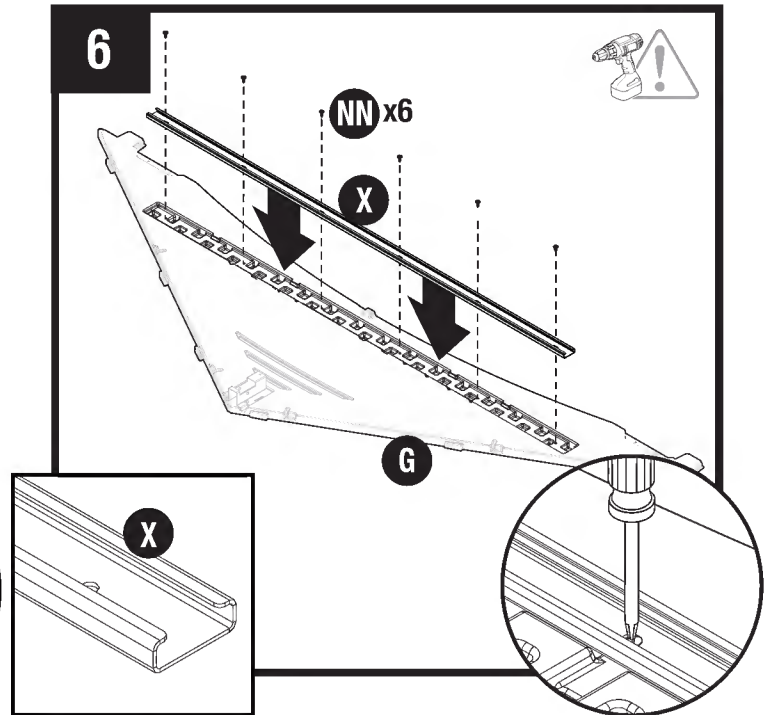


Attach one D-ring bolt (O) to the inside on the bottom of left door (J) using four screws (DDD).

## Pre-Assembly - Header

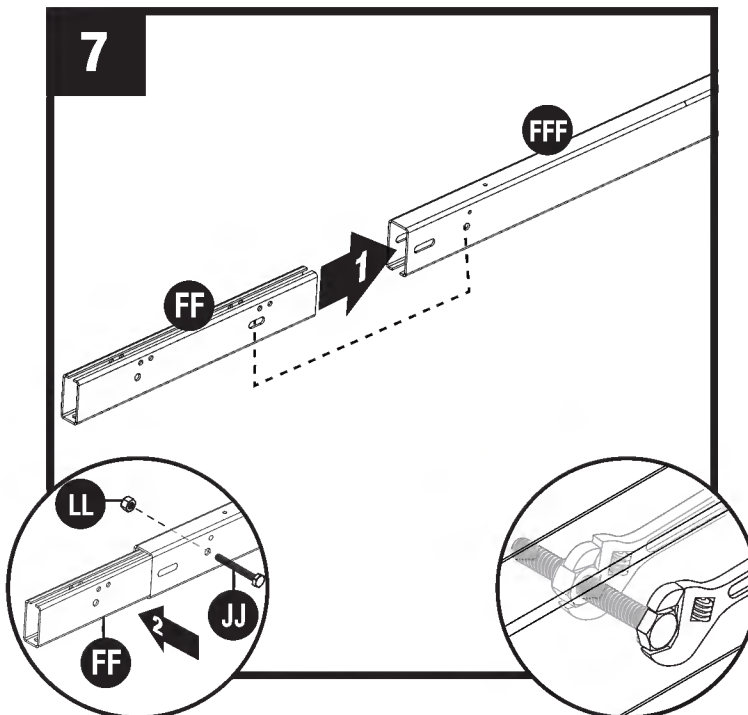


Slide header bracket (U) under tabs on inside peak of front header (G) and secure with two screws (NN). **DO NOT** over tighten screws.



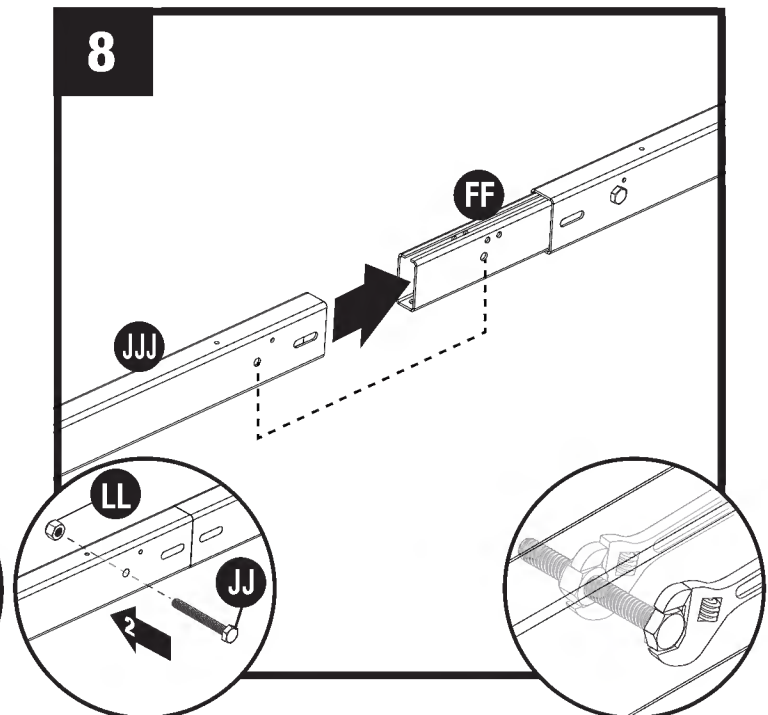
Lay front header (G) on ground with lettering side facing up. Place front header beam (X, 57") into pocket on inside of front header (G). Attach with six screws (NN). **DO NOT** over tighten screws.

Repeat for rear header (H) and rear header beam (EEE, 62").



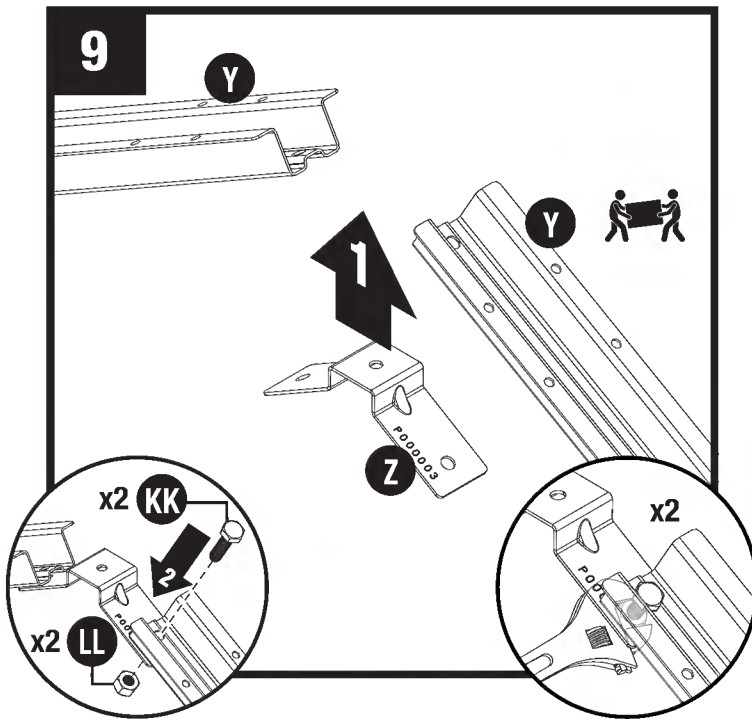
Place ridge beam joiner (FF) into the 36" ridge beam (FFF). Secure with hex bolt (JJ) and nut (LL).

**Important:** Joiner (FF) orientation is critical, see picture.



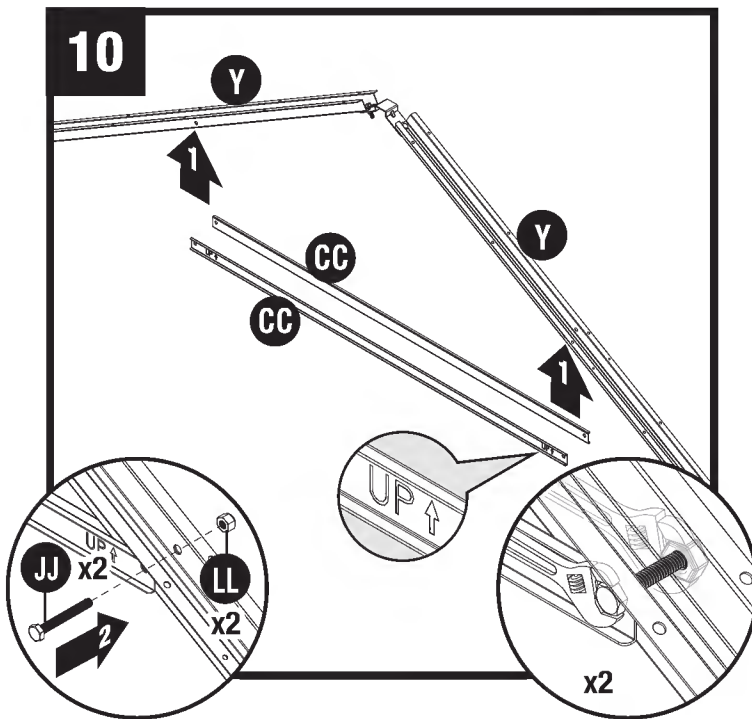
Place 82.25" ridge beam (JJJ) onto the joiner (FF). Secure with hex bolt (JJ) and nut (LL).

## Pre-Assembly - Roof and Truss



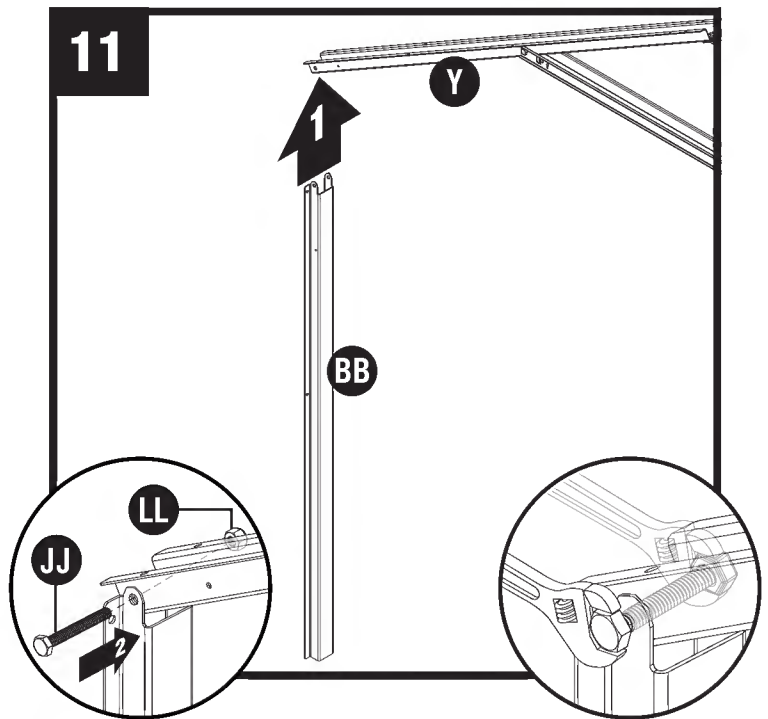
Attach truss bracket (Z) to end of one truss leg (Y) with hex bolt (KK) and locking nut (LL).

Repeat for second truss leg (Y).



Attach two truss cross beams (CC) to two truss legs (Y) using two hex bolts (JJ) and two locking nuts (LL). Stand truss and check cross beam is level. Repeat for rear truss assembly.

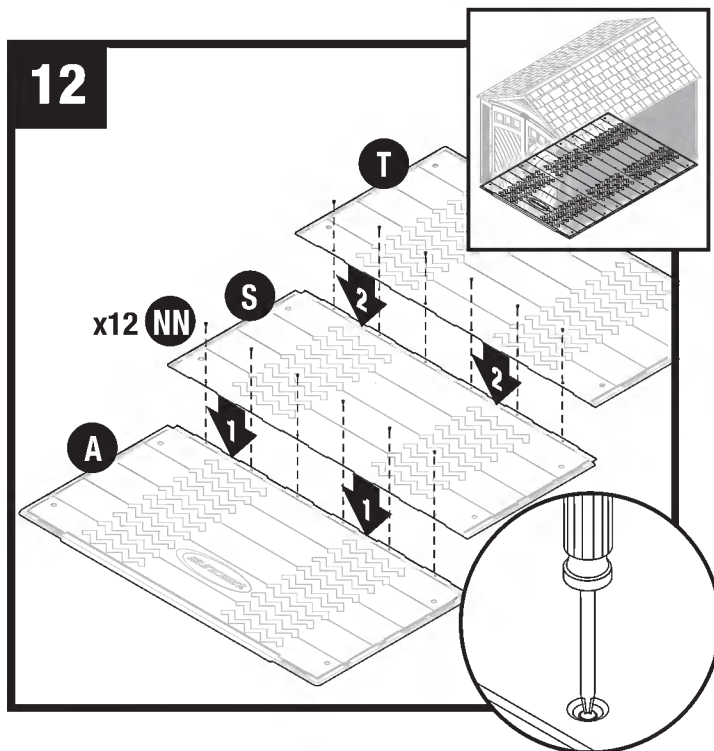
**Important:** The word "UP" is etched into truss cross beams (CC) to help ensure proper orientation during installation.



Place side adapter (BB) at end of left truss leg (Y). Secure adapter bracket with one hex bolt (JJ) and one locking nut (LL). Repeat for other truss leg.

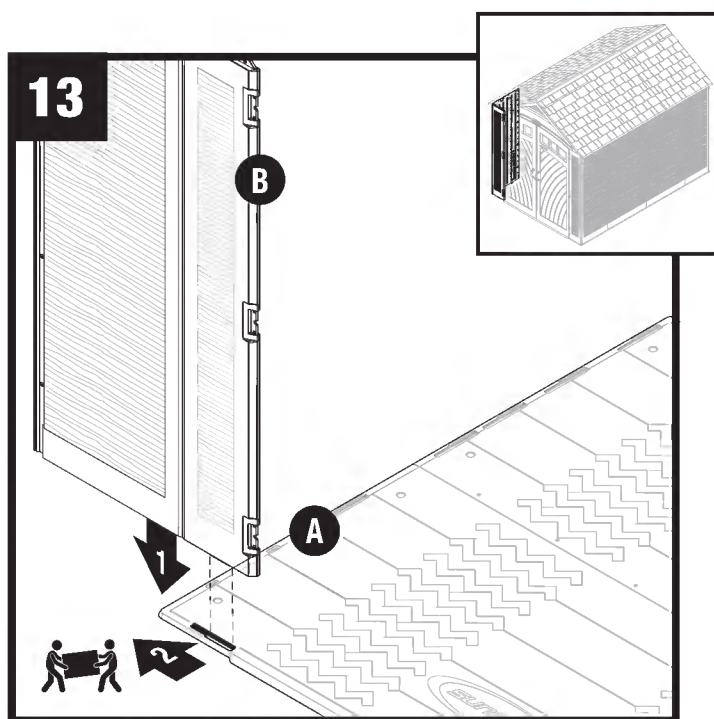
**Note:** DO NOT over tighten side adapter bracket (BB) onto end of truss legs (Y). This makes roof assembly difficult.

## Assembly - Walls



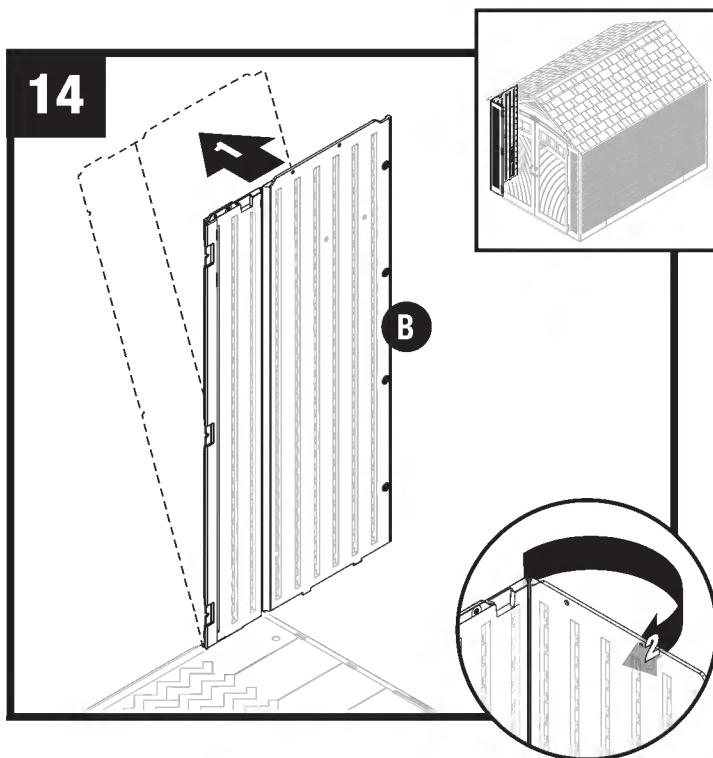
Push front floor (A) and mid floor (S) panels together and secure with six screws (NN). Repeat for rear floor panel (T).

**Note:** Refer to site preparation earlier in this manual for information about how to secure floors to foundation, after assembly is completed.

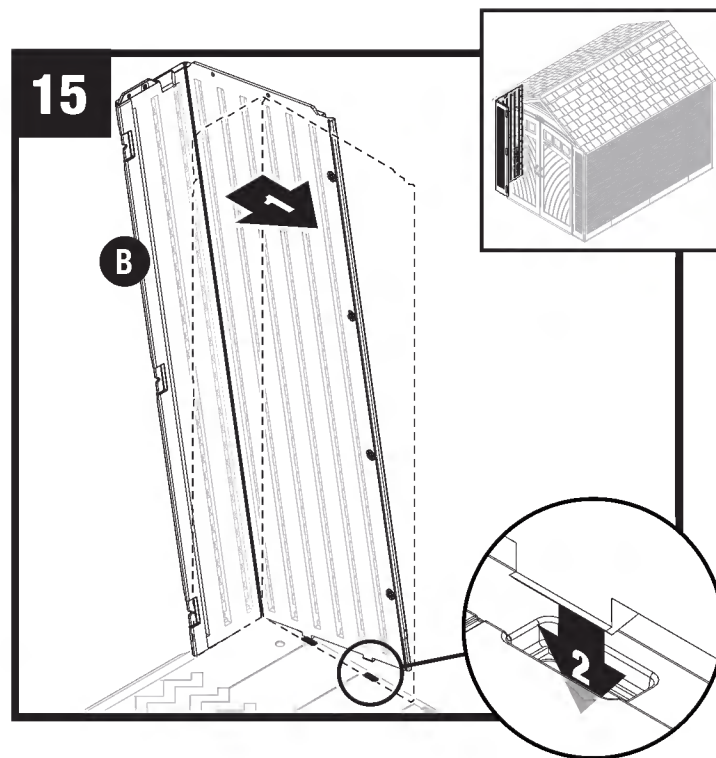


Align tab on bottom right side of left front corner (B) with slot on front floor (A). Lower panel into slot and lock in place by sliding panel toward outside of floor.

**Note:** Use a rubber mallet to “push” left front corner (B) into locked position.

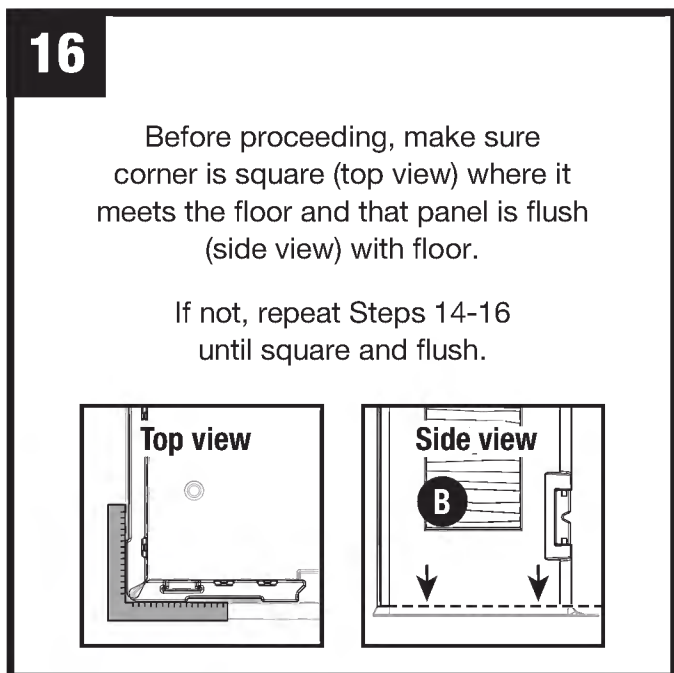


Tip left front corner (B) outward slightly and bend corner hinge.

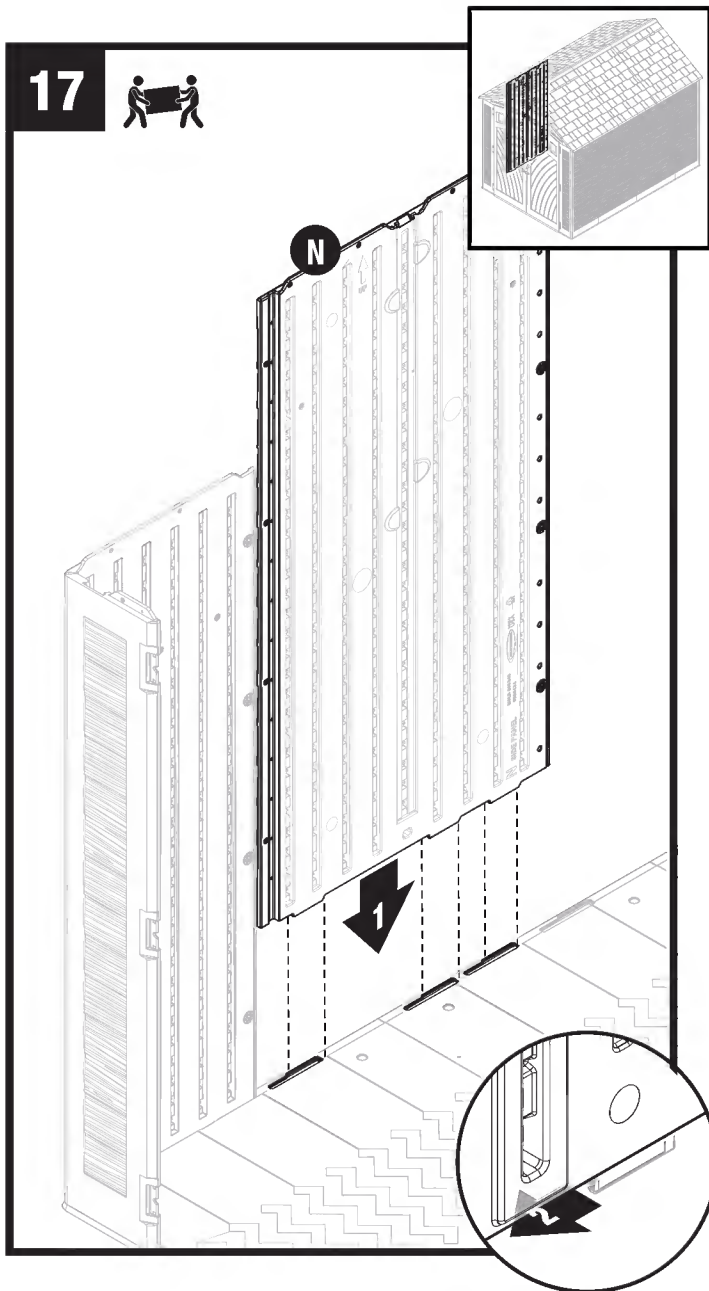


Tip left front corner (B) back to vertical position and align lower tabs on right side with slots in floor. Push downward to engage.


**Note:** You will hear a snap when tab is fully engaged.

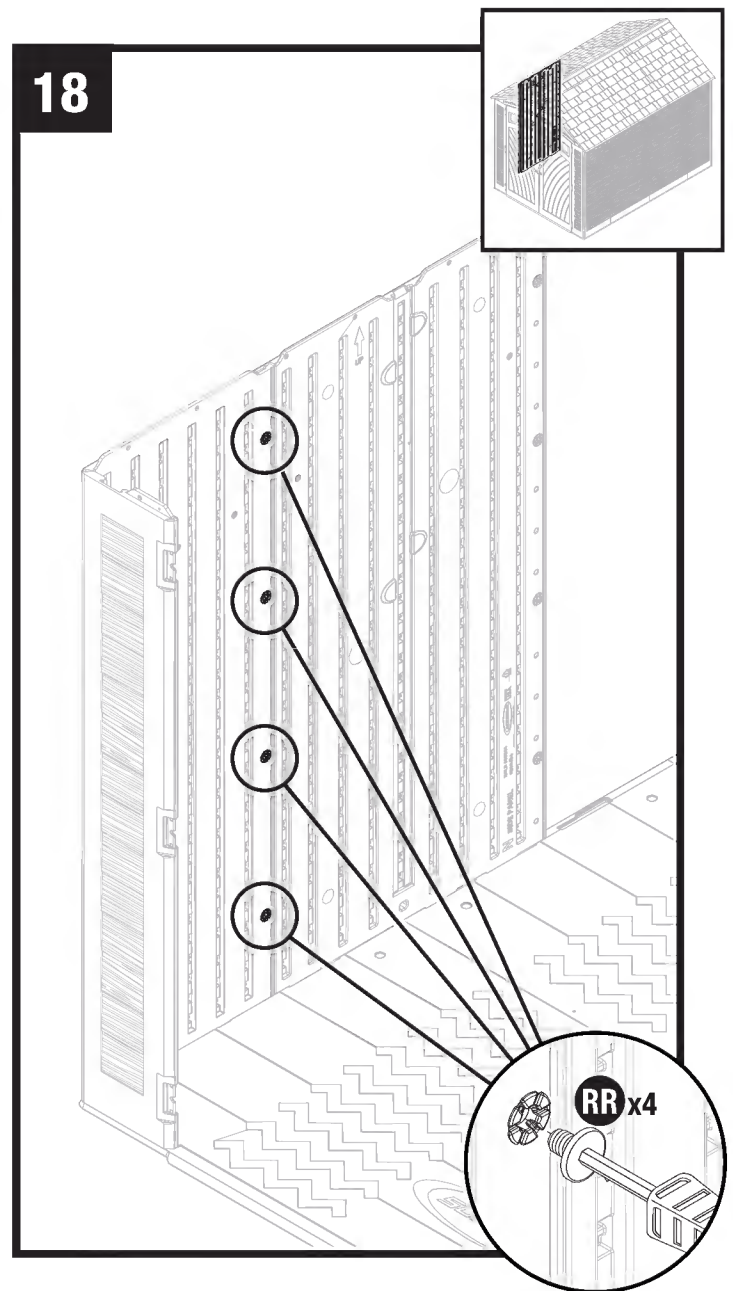






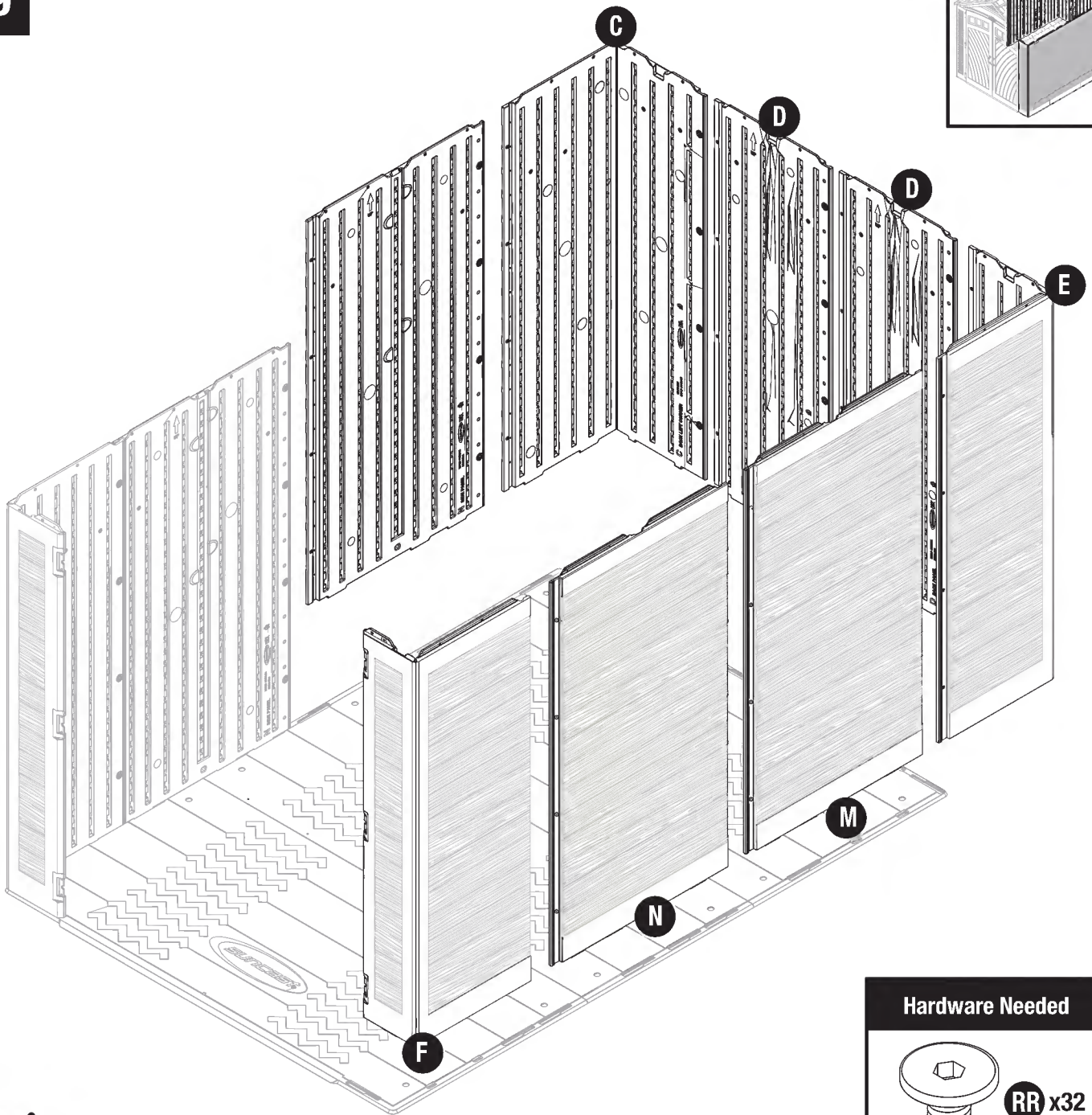
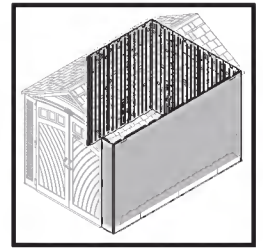
Align tabs on bottom of side panel (N) with slots along front and rear floors. Lower panel into slots and lock in place by sliding panel toward front corner.

 **Note:** Use a rubber mallet to “push” side panel (N) into locked position.



Secure side panel with four easy bolts (RR), working from floor to roof. **DO NOT** use torque wrench. Use easy bolt easy driver (SS) and hand tighten. Easy bolt head will be flush when fully seated. **DO NOT** over tighten easy bolts. Tighten easy bolt securely (three to four clicks).

19

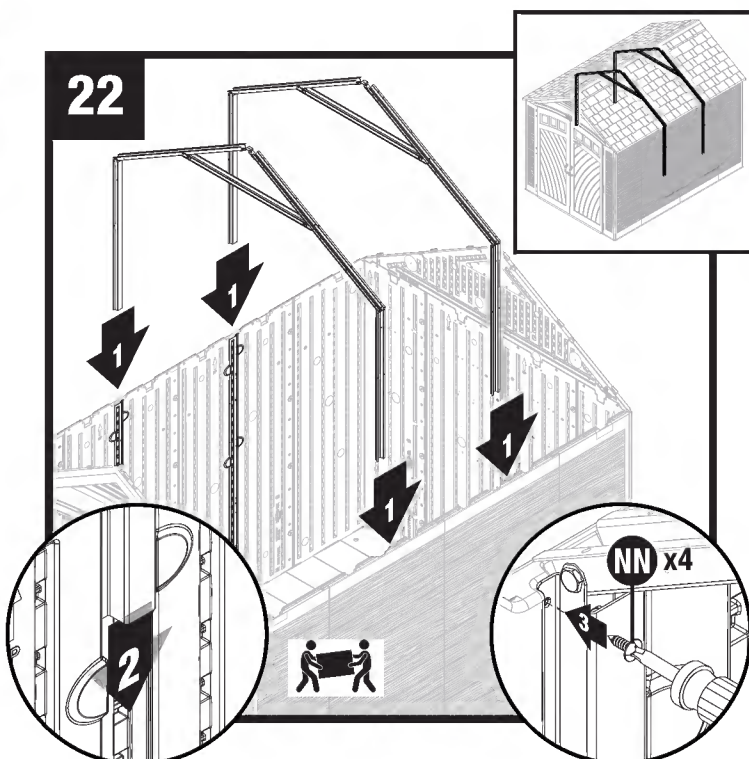
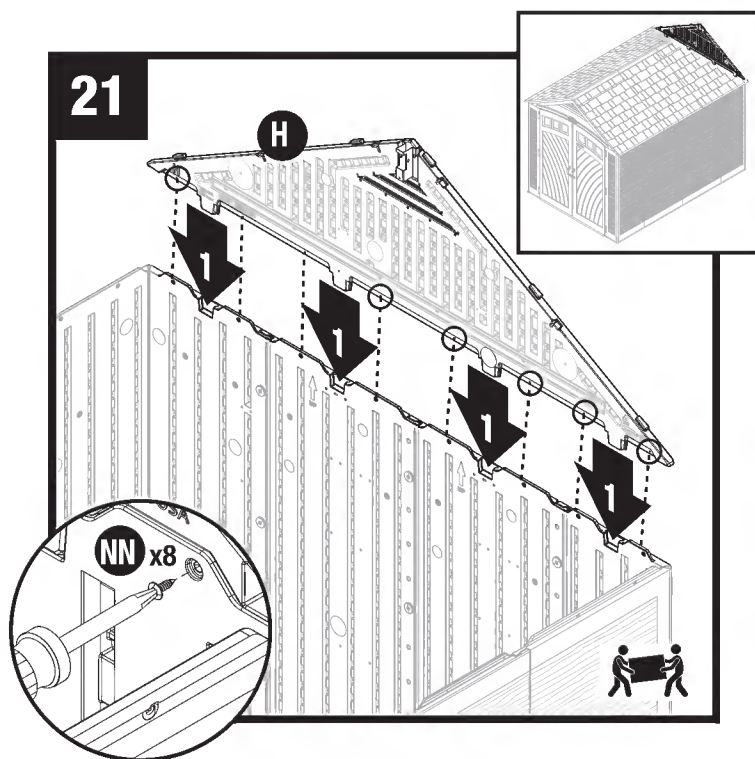
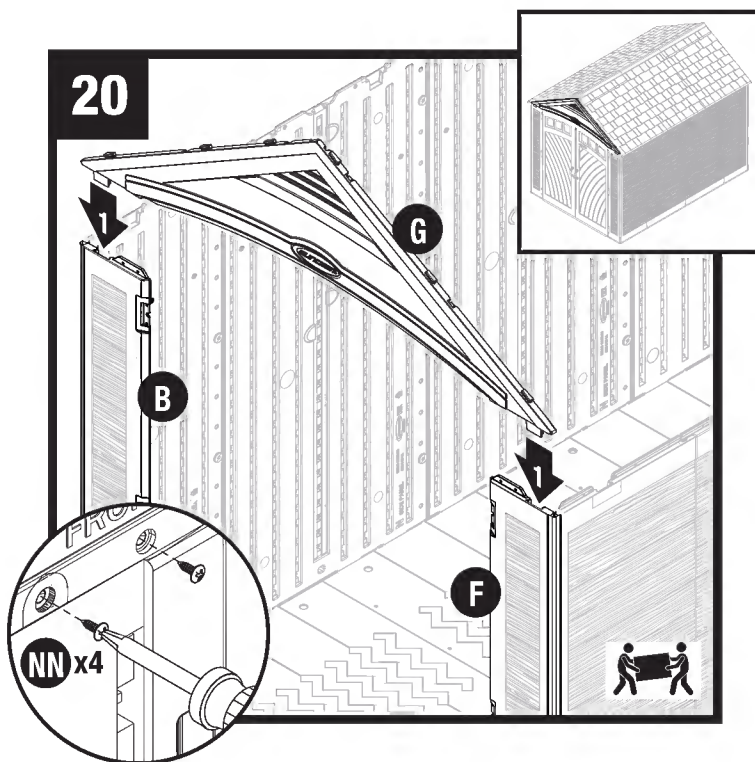


**Hardware Needed**



Repeat Steps 14-19 for remaining panels. Shed panels must be installed in order, starting from left front corner and finishing at right front corner.

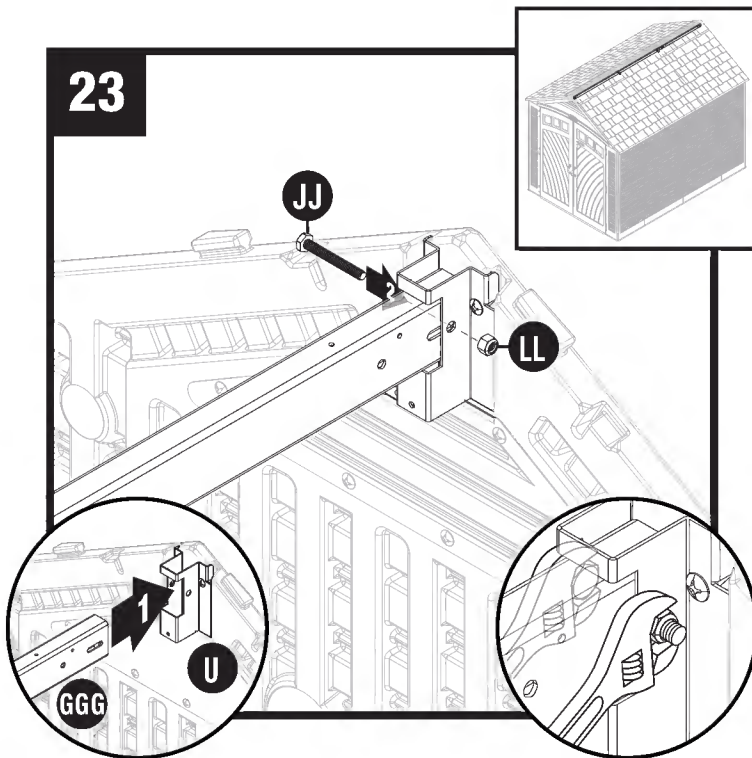
## Assembly - Headers and Truss



Place rear header (H) over back walls and fit four protruding support tabs into slots molded in back walls. Secure rear header using eight screws (NN).

Slide truss assembly into place. Secure with four screws (NN) in each side adapter bracket. Repeat with rear truss assembly.

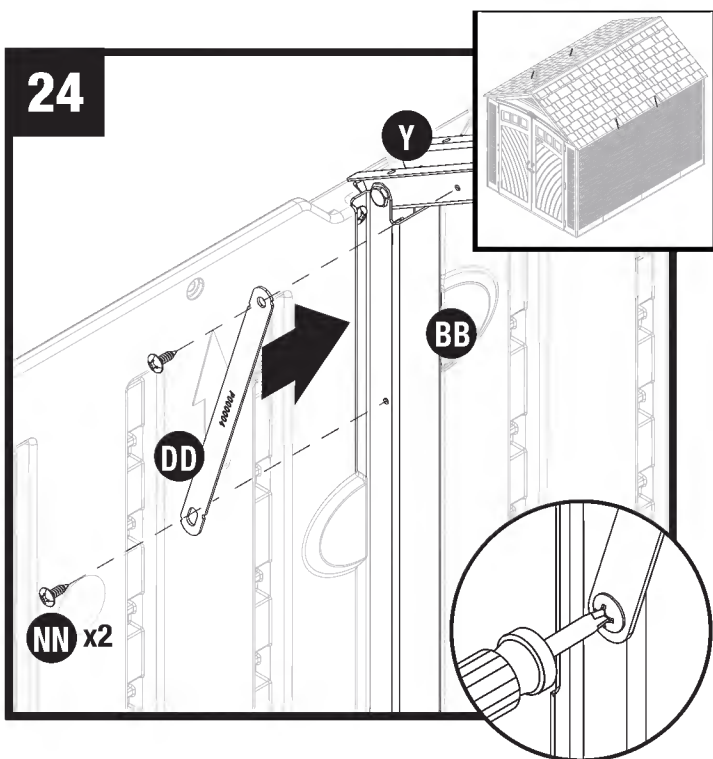




Raise ridge beam (GGG) up and into rear header bracket. Secure with one hex bolt (JJ) and one locking nut (LL). Repeat with header bracket.

**Note:** Make sure open end of ridge beam faces down.

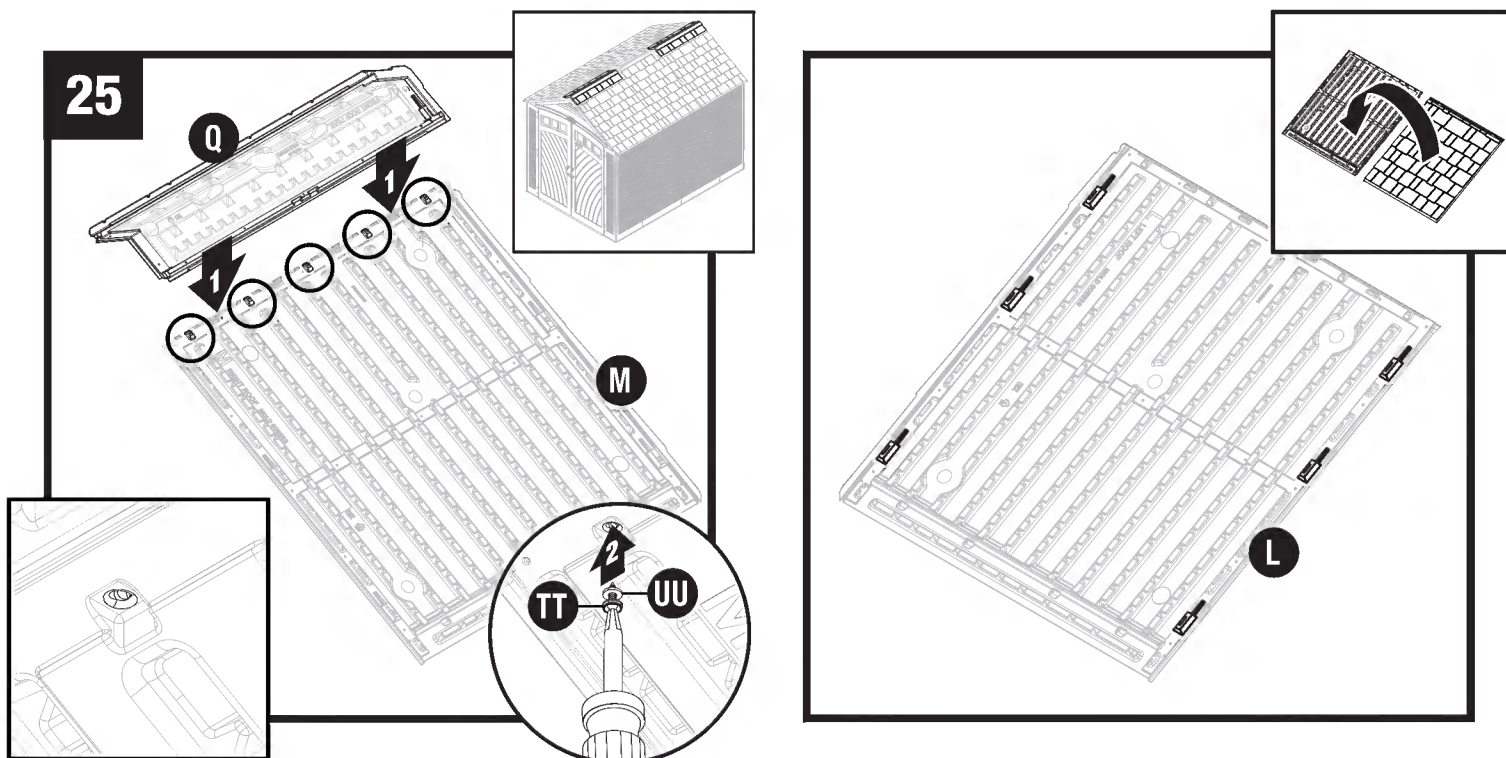
**Note:** Alignment of ridge beam to header bracket may require header panels to be pushed inwards or outwards slightly as ridge beam is slid into place.



Attach truss strap (DD) to side adapter bracket (BB) and truss leg (Y) with two screws (NN).

Repeat for the remaining 3 truss straps requiring assembly.

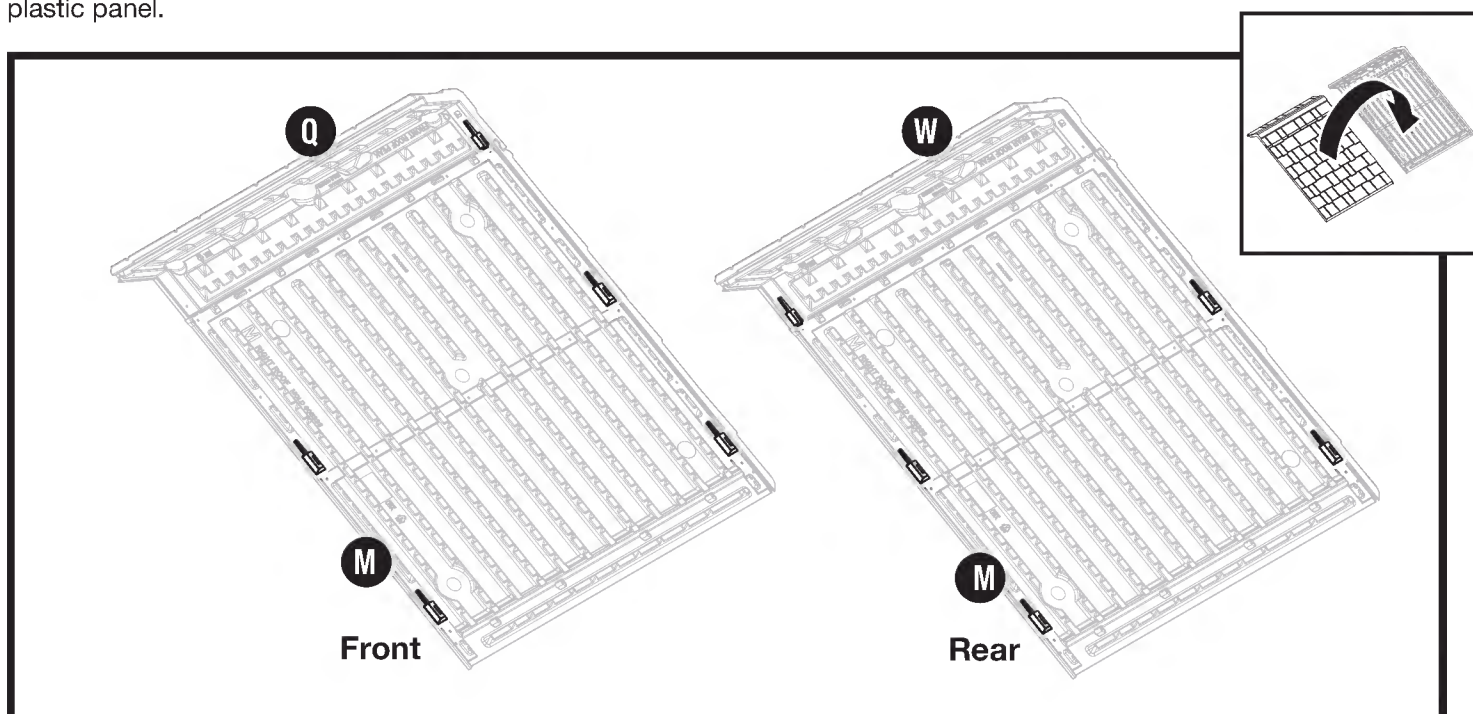
## Assembly - Roof



Place the front roof peak (Q) onto a right roof panel (M). Secure with five rubber washers (UU) and five sealing screws (TT). Repeat for rear roof peak (W) and remaining right roof panel (M). Center roof panel does not have roof peak.

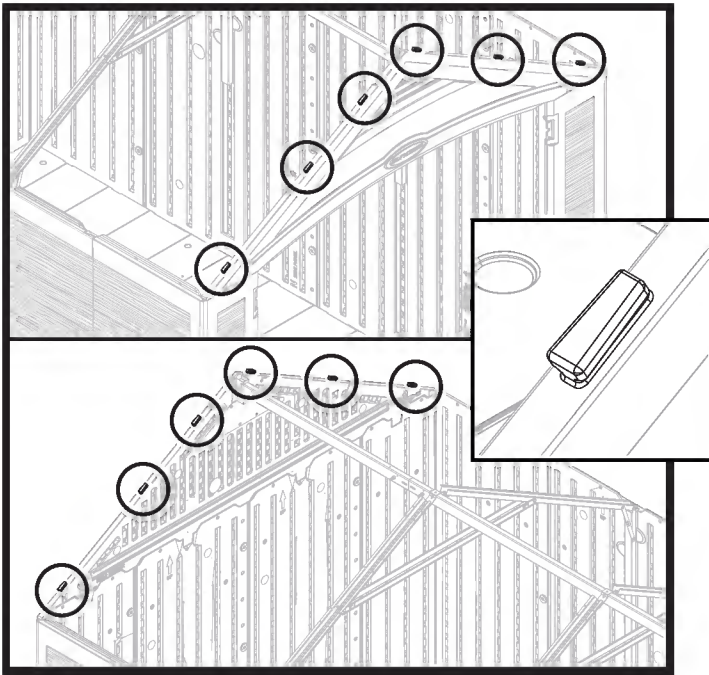
**Note:** Rubber side of washer should be against plastic panel.

Before proceeding, locate and identify the six slots on interior side of left roof panels (L).

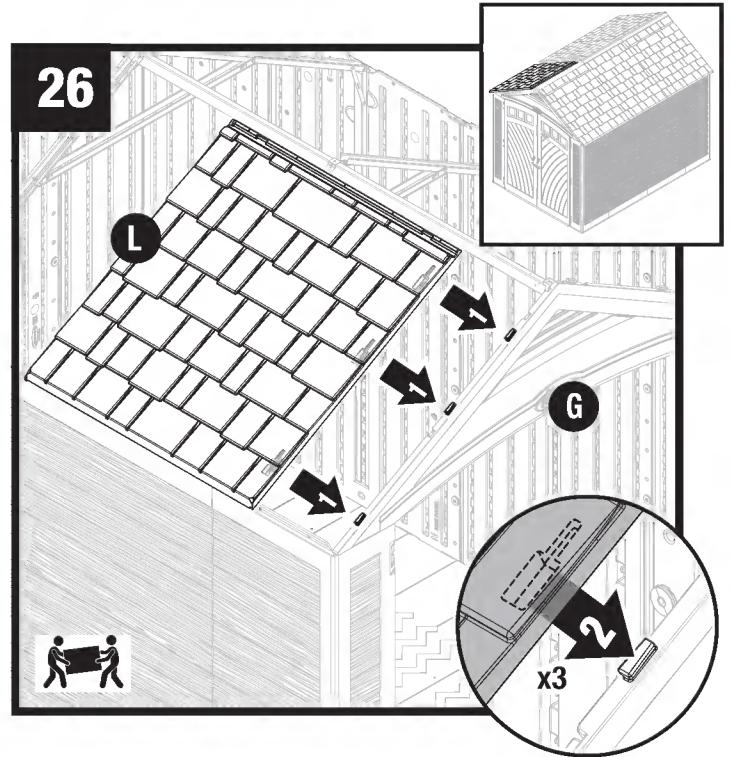


Before proceeding, locate and identify the five slots on interior side of right front (M,Q) and right rear (M,W) roof panel assemblies.

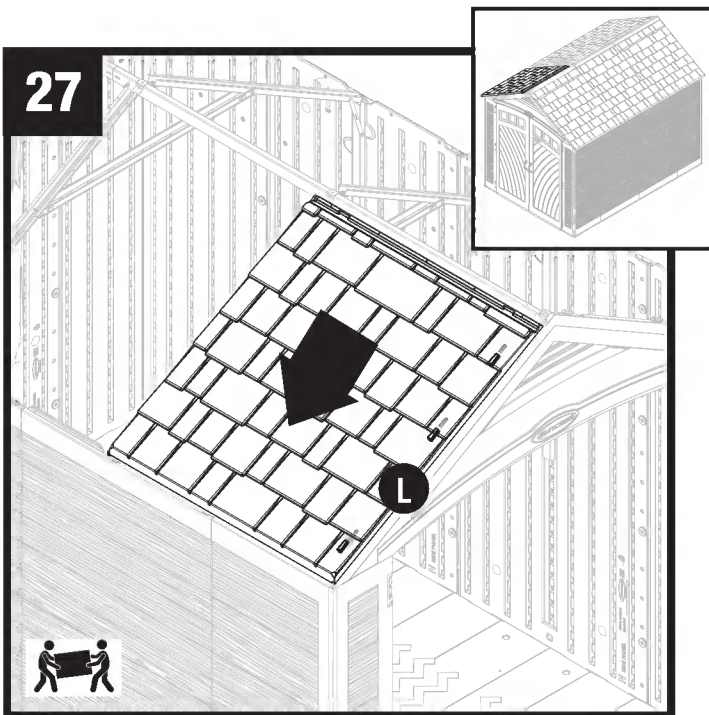




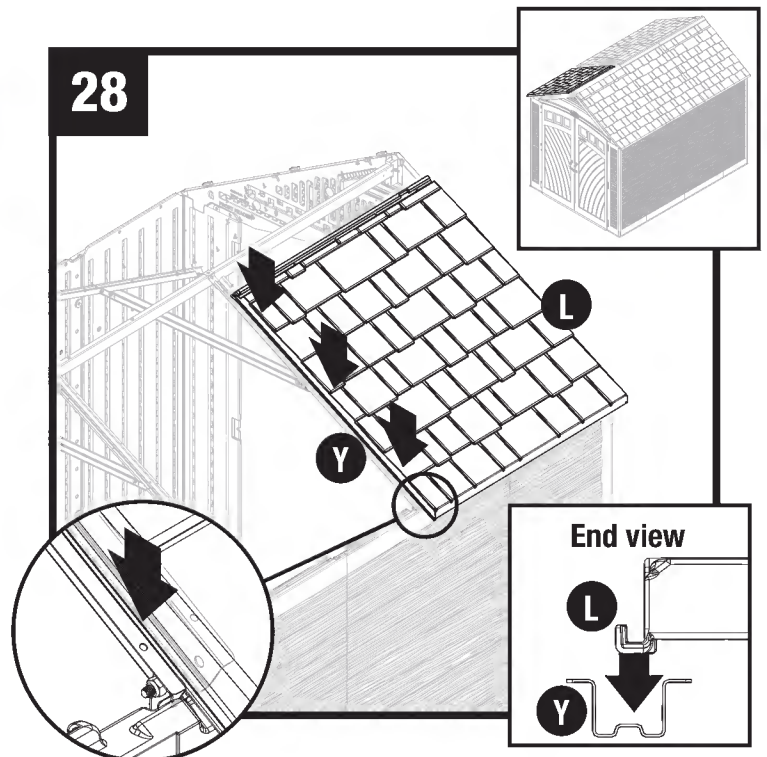
Before proceeding, locate and identify six front header tabs and six rear header tabs.



Lay left roof (L) directly over three tabs on left side of front header (G). With left roof slots seated over/on header tabs, check alignment in all three spots.

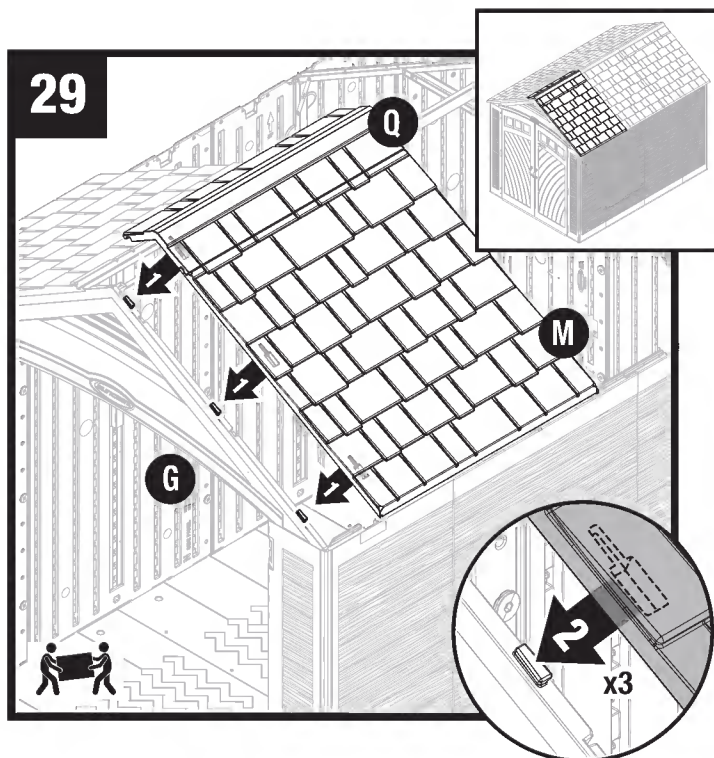


Slide left roof (L) down towards the outside of shed.

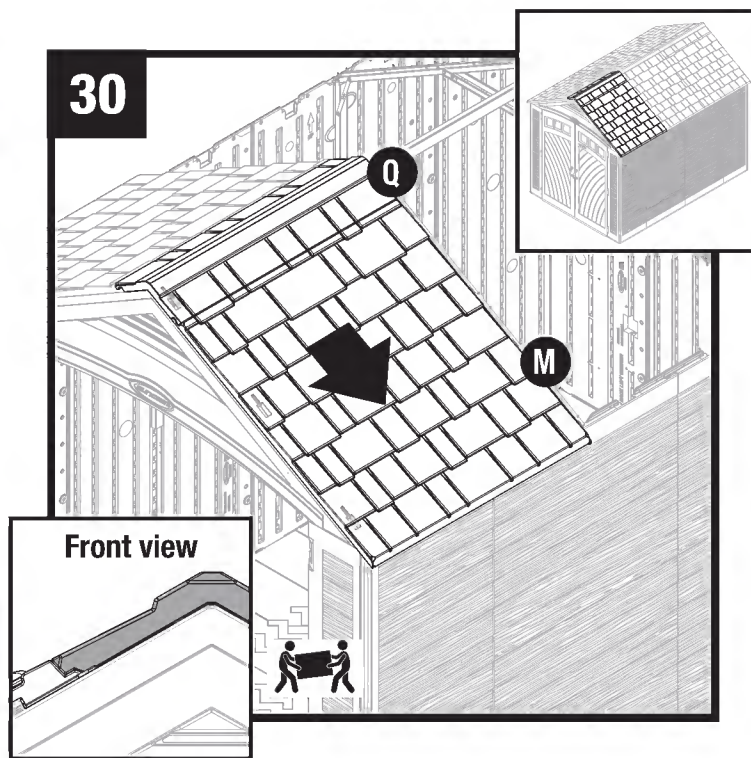


Press edge of left roof (L) into channel on truss leg (Y).

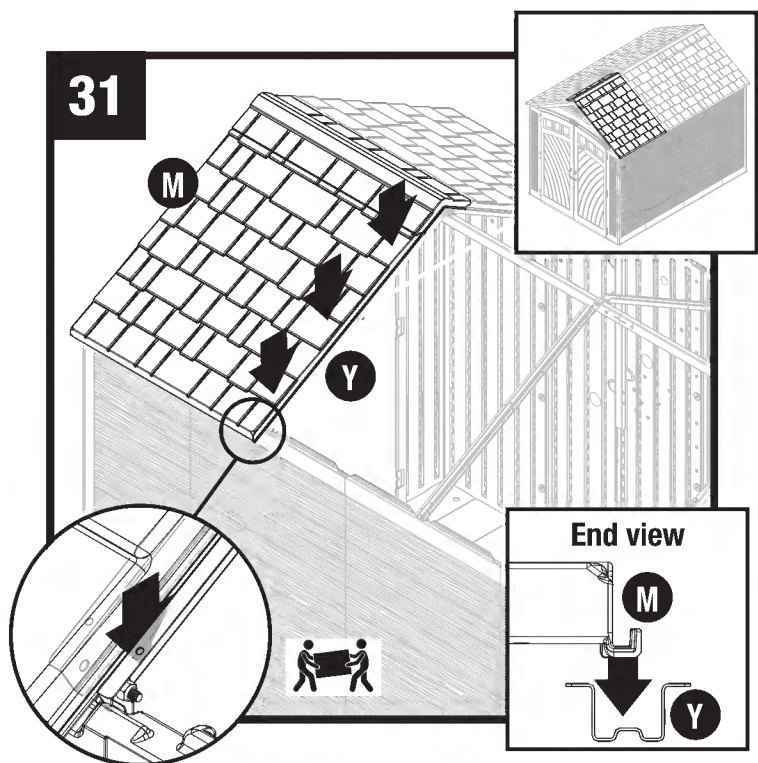




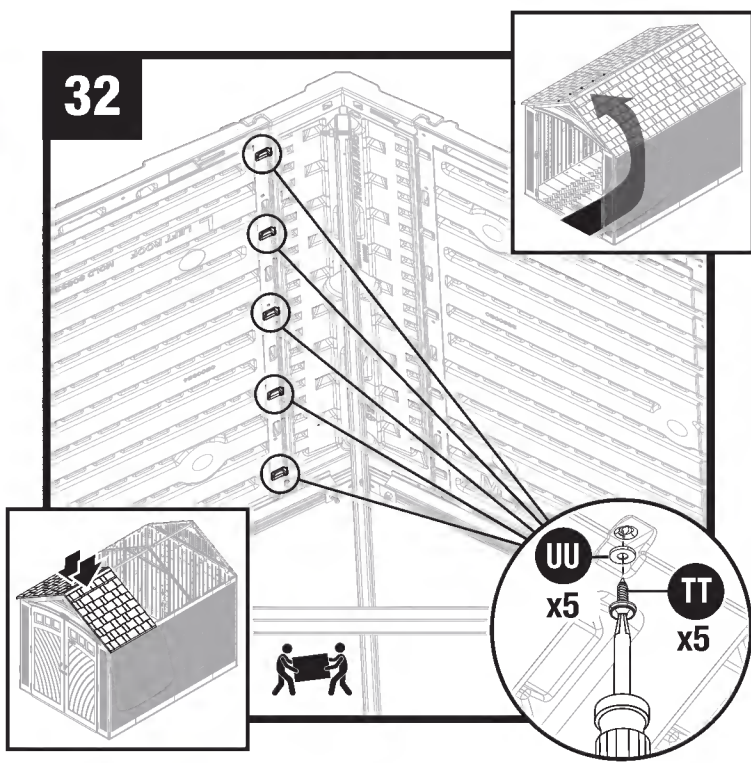
Lay right roof (M) with front roof peak (Q) directly over three tabs on right side of front header (G). With right roof slots seated over/on header tabs, check alignment in all three spots.



Slide right roof (M) with front roof peak (Q) down towards the outside of shed.

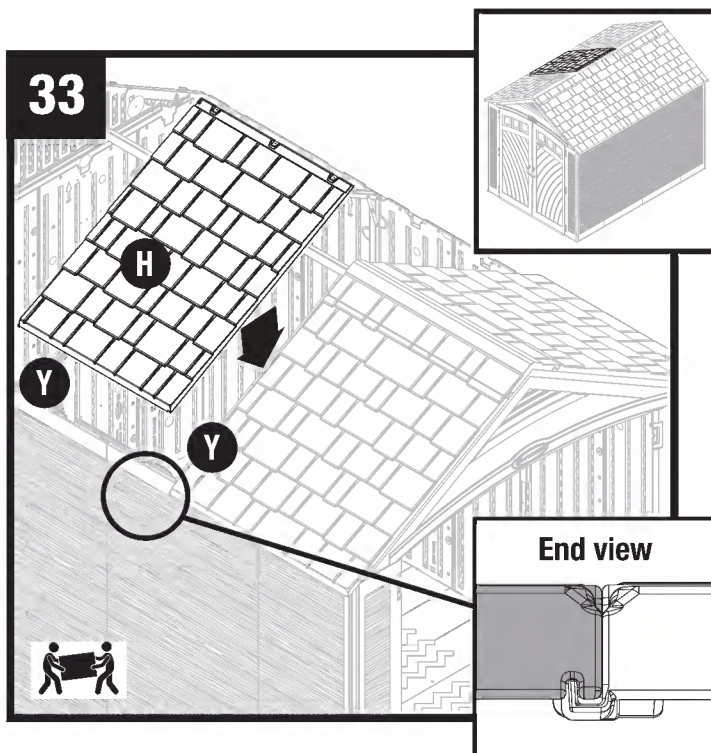


Press edge of right roof (M) into channel on truss leg (Y).

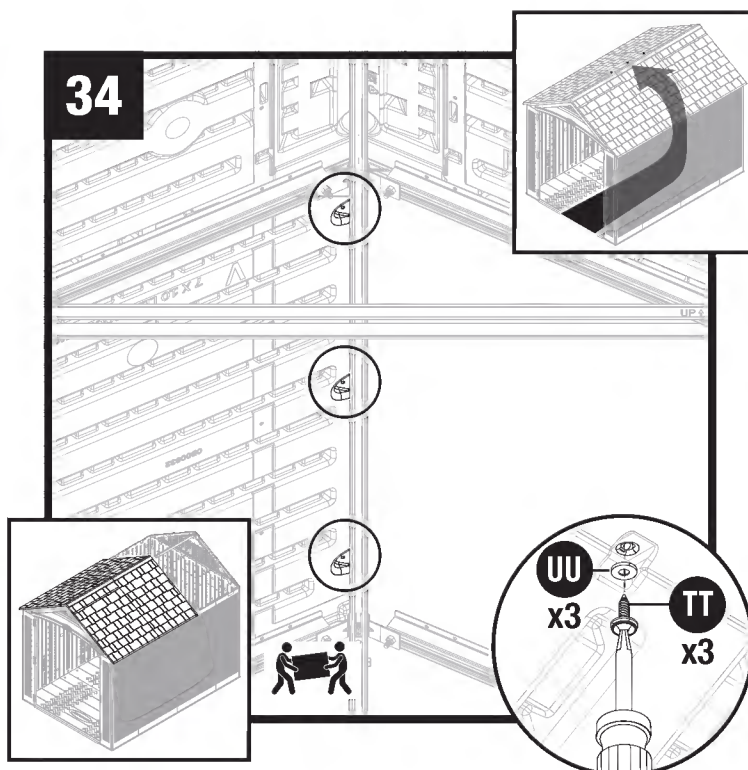


Push down on the roof panels with roof peaks from the outside. From inside shed, secure roof peak to roof panels together using 5 rubber sealing washers (UU) and 5 sealing screws (TT).

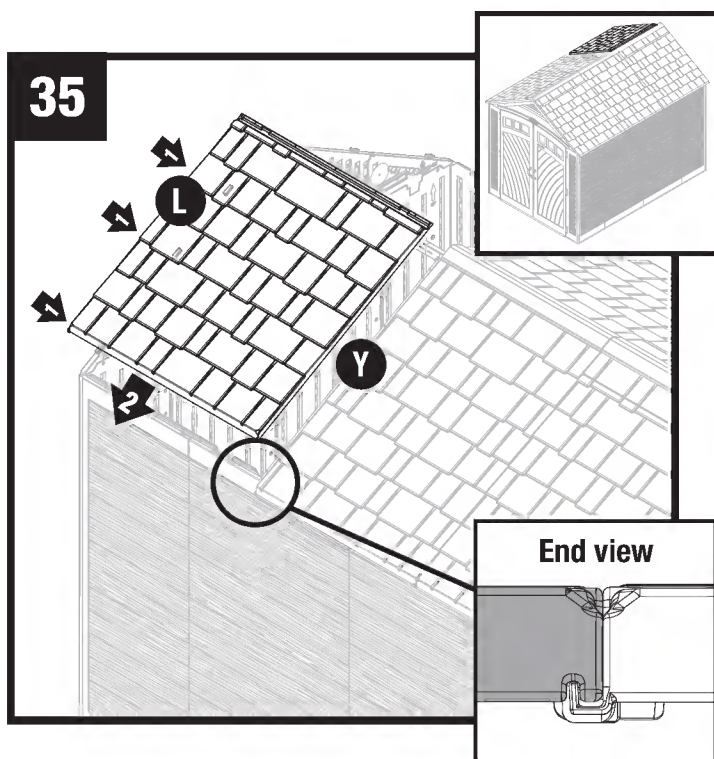




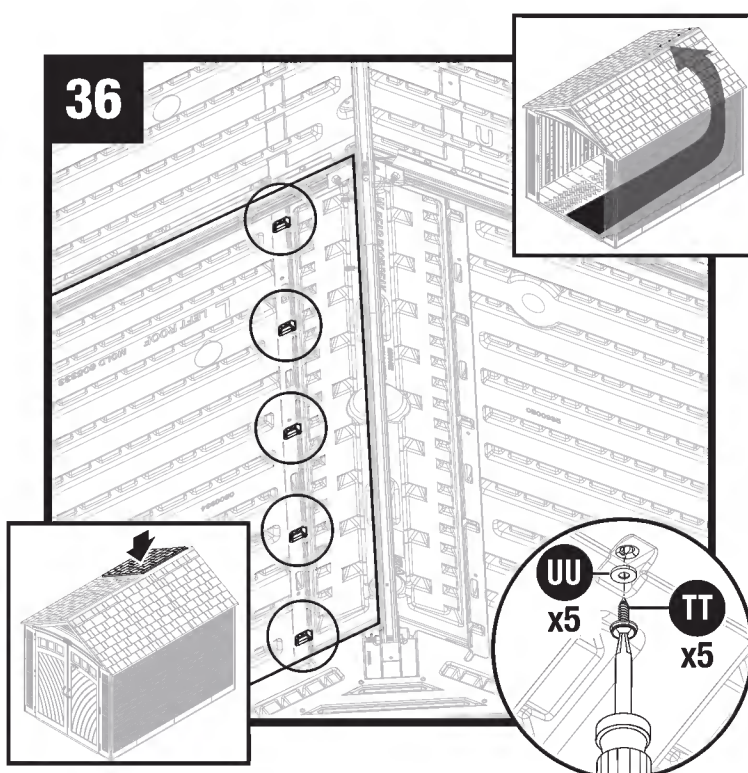
With at least two people, lower the left middle roof (H) onto the roof truss legs (Y). Press edge of left roof (H) into channel on truss leg (Y). Repeat with right middle roof (III).



Push down on the roof panels with roof peaks from the outside. From inside shed, secure roof peak to roof panels together using 3 rubber sealing washers (UU) and 3 sealing screws (TT).

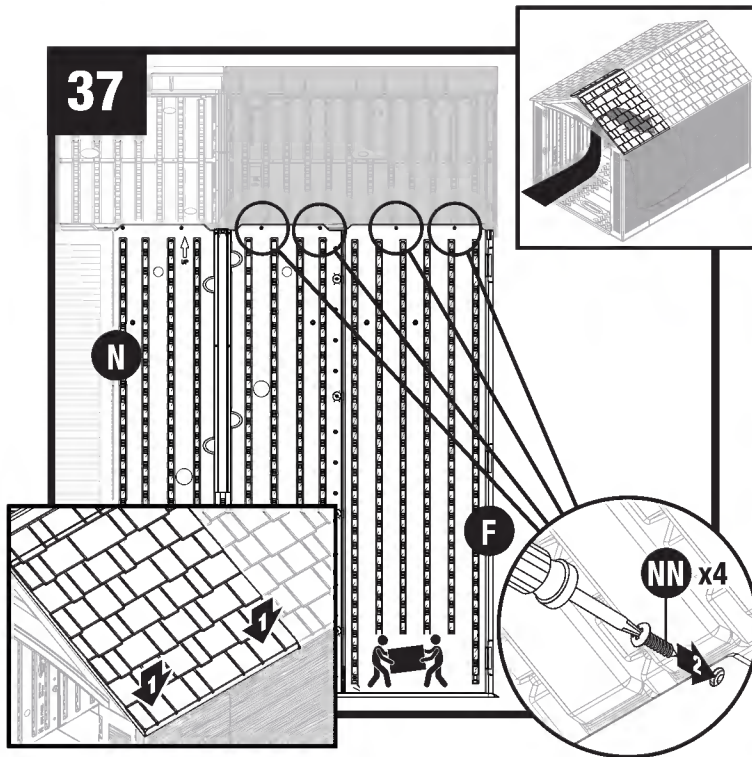


Lay left rear roof (L) directly over three tabs on left side of rear header (H). With roof panel seated on header tabs, pull roof downward at each header tab until roof snaps in place. Repeat with rear right roof (M).

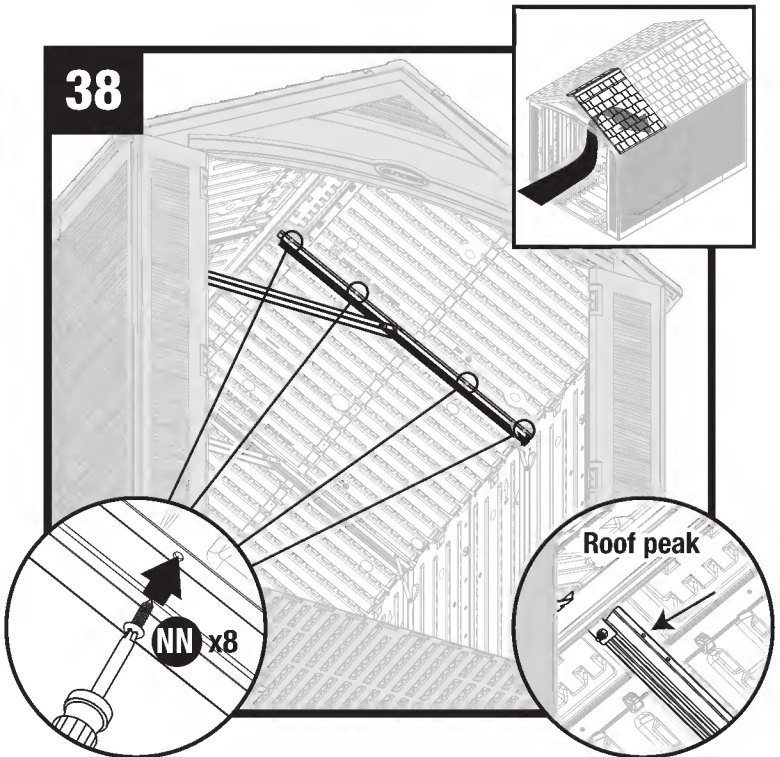


Push down on the roof panels with roof peak from the outside. From inside shed, secure roof peak to roof panels together using 5 rubber sealing washers (UU) and 5 sealing screws (TT).

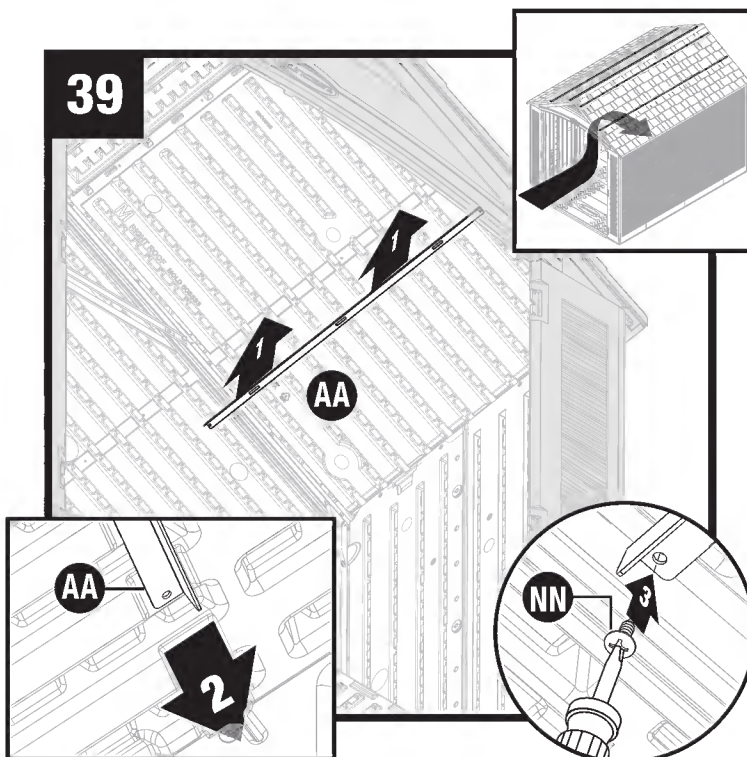




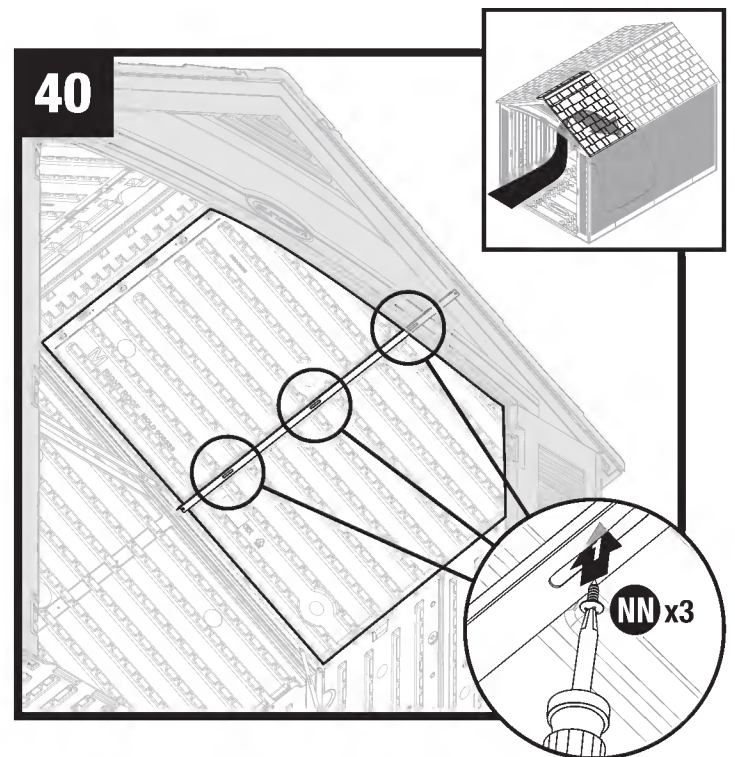
From outside of shed, Pull down lower corner of each roof panel. From inside of the shed, attach tabs on right front corner (F) and side panel (N) to roof panel with four screws (NN).



Secure roof to **both** sides of roof truss using eight screws (NN). Each screw will attach at a corresponding screw boss on the roof. Make sure roof peak is secured (highest screw holes on roof truss).

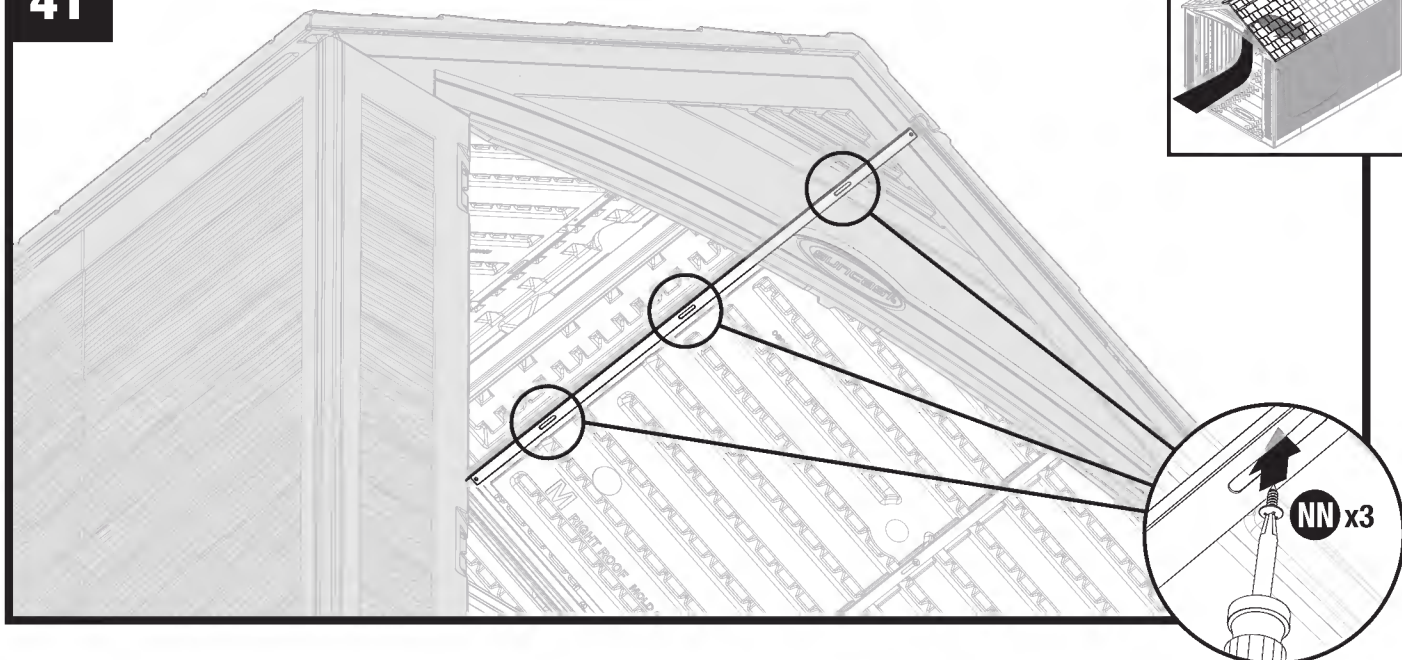


Raise L bracket (AA) into position against roof. Slide roof support (AA) into front header. Secure roof support to underside of truss leg with one screw (NN).



Secure L bracket (AA) to roof using three screws (NN).

41

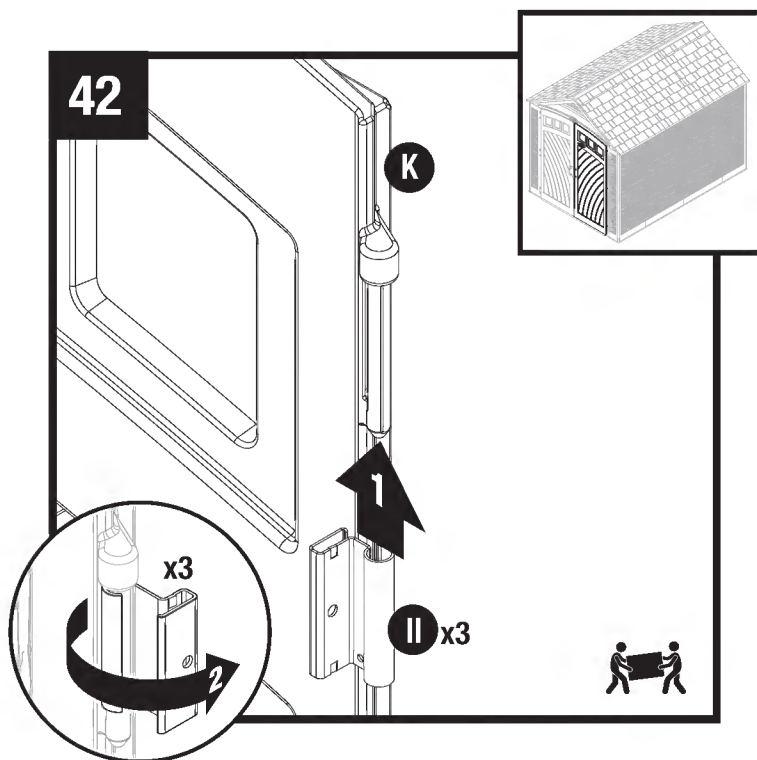


Raise second roof support (AA) to top of roof panel. Secure roof support (AA) to roof using three screws (NN).

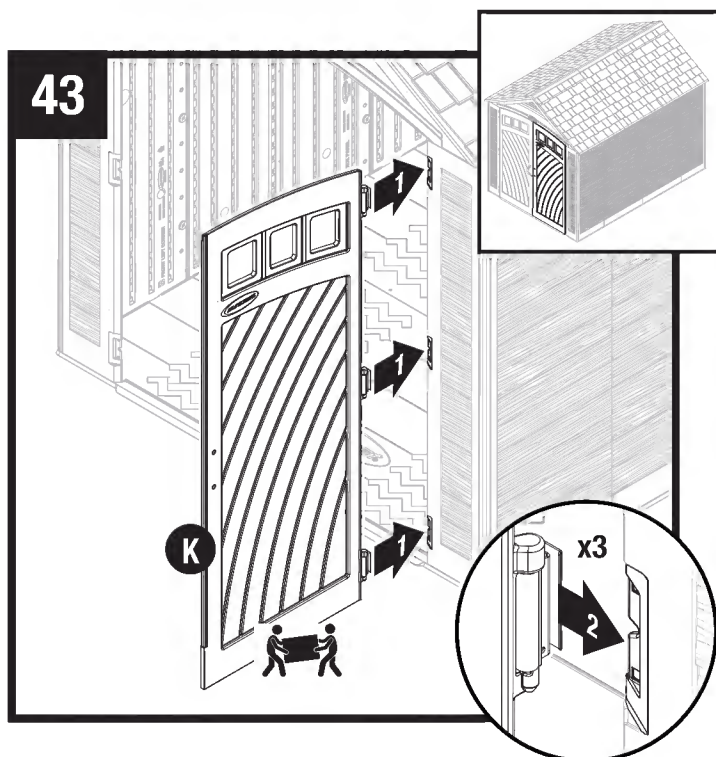
Repeat Steps  
37- 41 to secure  
remaining roof  
panels.



## Assembly - Doors



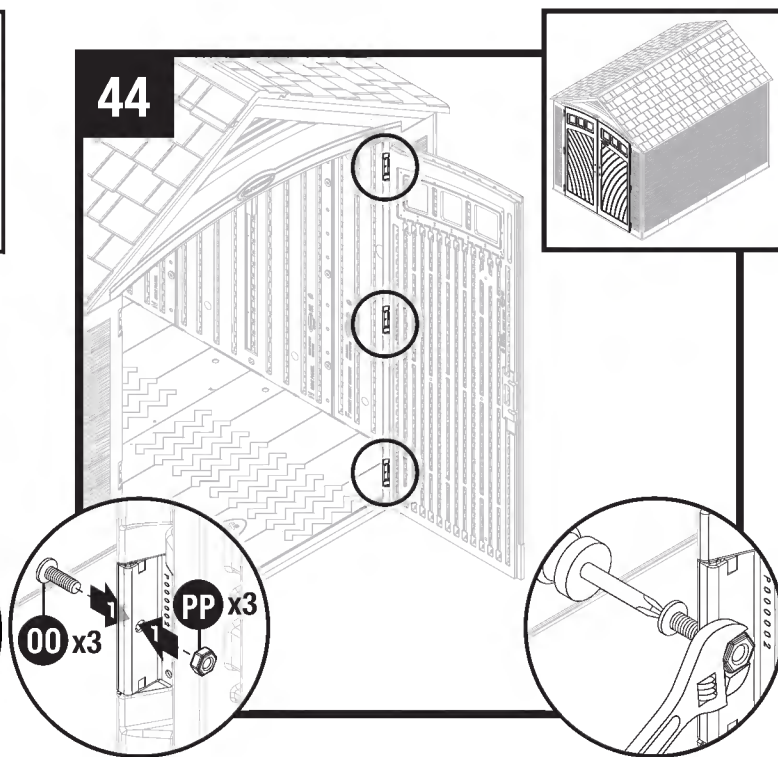
Stand right door (K) upright with three hinge mounts facing right. Slide one metal hinge plate (II) up onto each hinge mount. Rotate hinges to outside of door. Repeat with other hinges.



With metal hinge plates in open position, slide one hinge over each hinge receptacle on inside of right front panel.

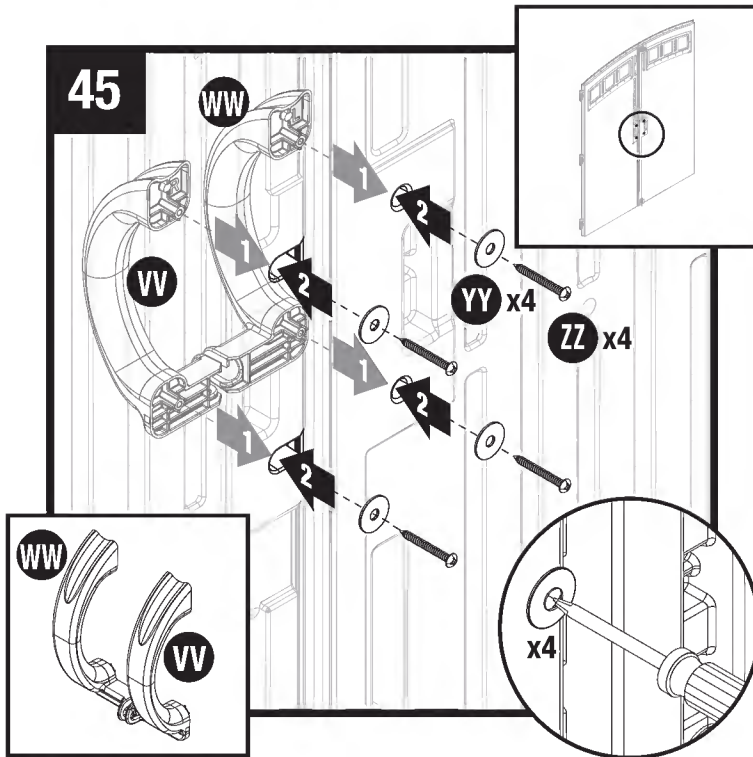


**Note:** Use a rubber mallet if necessary.

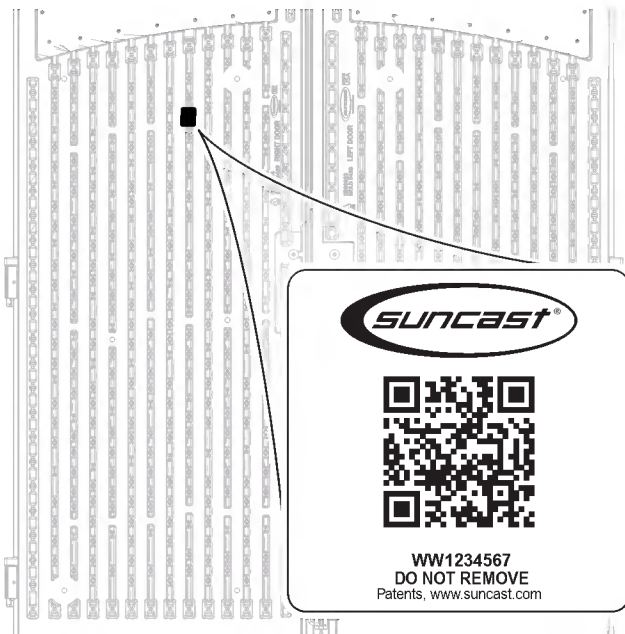


Secure each metal hinge plate with one screw (00) and one locking nut (PP).

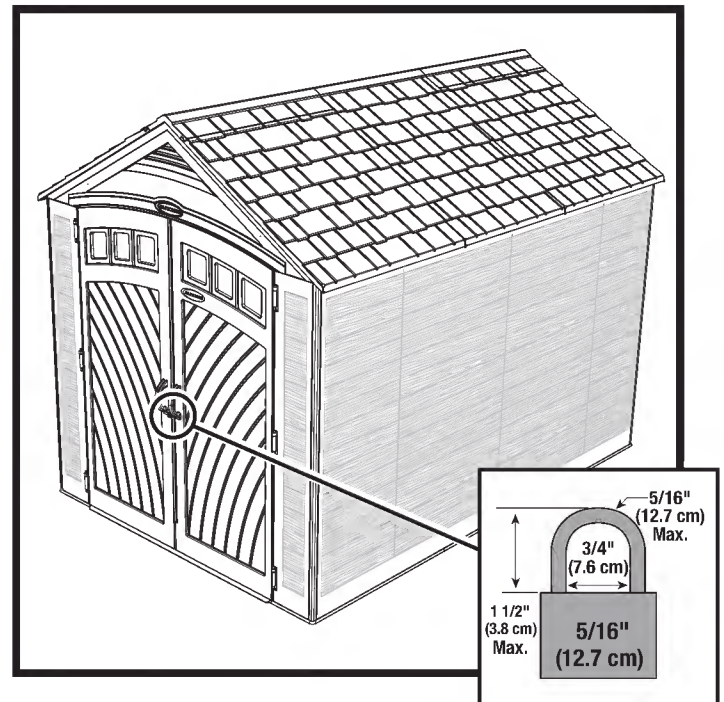
Repeat Steps 43-45 for left door (J).



From the outside of doors, insert door handle (VV) stems into holes of left and right doors. On inside of doors, place washers (YY) on each door handle stem, and secure each with one screw (ZZ).



This label located on the inside of door contains information regarding your product. The QR code is a direct product link to the product registration page on the SunCast website. The codes at the bottom of the label are specifically related to your product. Please have these numbers available should you need to contact SunCast.



Attach a 5/16" lock (not provided) to door latch to properly secure shed.

**Note:** Lock not included. To maintain warranty coverage, the product should be padlocked at all times when not in use.

